



2026

TrailLink Unlimited 

Guides



Essex Bike Paths

Vermont



Essex Bike Paths

Vermont

The Essex Bike Paths comprise two segments on the northeast side of Essex Junction Village, forming a spiderweb of paved routes



The Essex Bike Paths comprise two segments on the northeast side of Essex Junction Village, forming a spiderweb of paved routes throughout neighborhoods and a shopping mall near the intersection of State Routes 15 and 289. From the southwest segment you can easily link to downtown Essex Junction along Main Street by continuing along a sidewalk. To link the two disconnected segments, use Beech Street and Hubbells Falls Drive along sidewalks. The link is less than a 0.5 mile.



TrailLink
by Rails-to-Trails Conservancy

TrailLink.com



Essex Bike Paths

Vermont

States: Vermont

Counties: Chittenden

Length: 4.7miles

Trail end points: Willoughby Dr. to Beech St.
and also Sidney Dr. to Main St. at Densmore Dr.
to Hubbells Falls Dr. and also to Brickyard Rd.

Trail surfaces: Asphalt

Trail category: Greenway/Non-RT

Trail activities: Bike,Inline

Skating,Walking,Wheelchair Accessible,Cross
Country Skiing

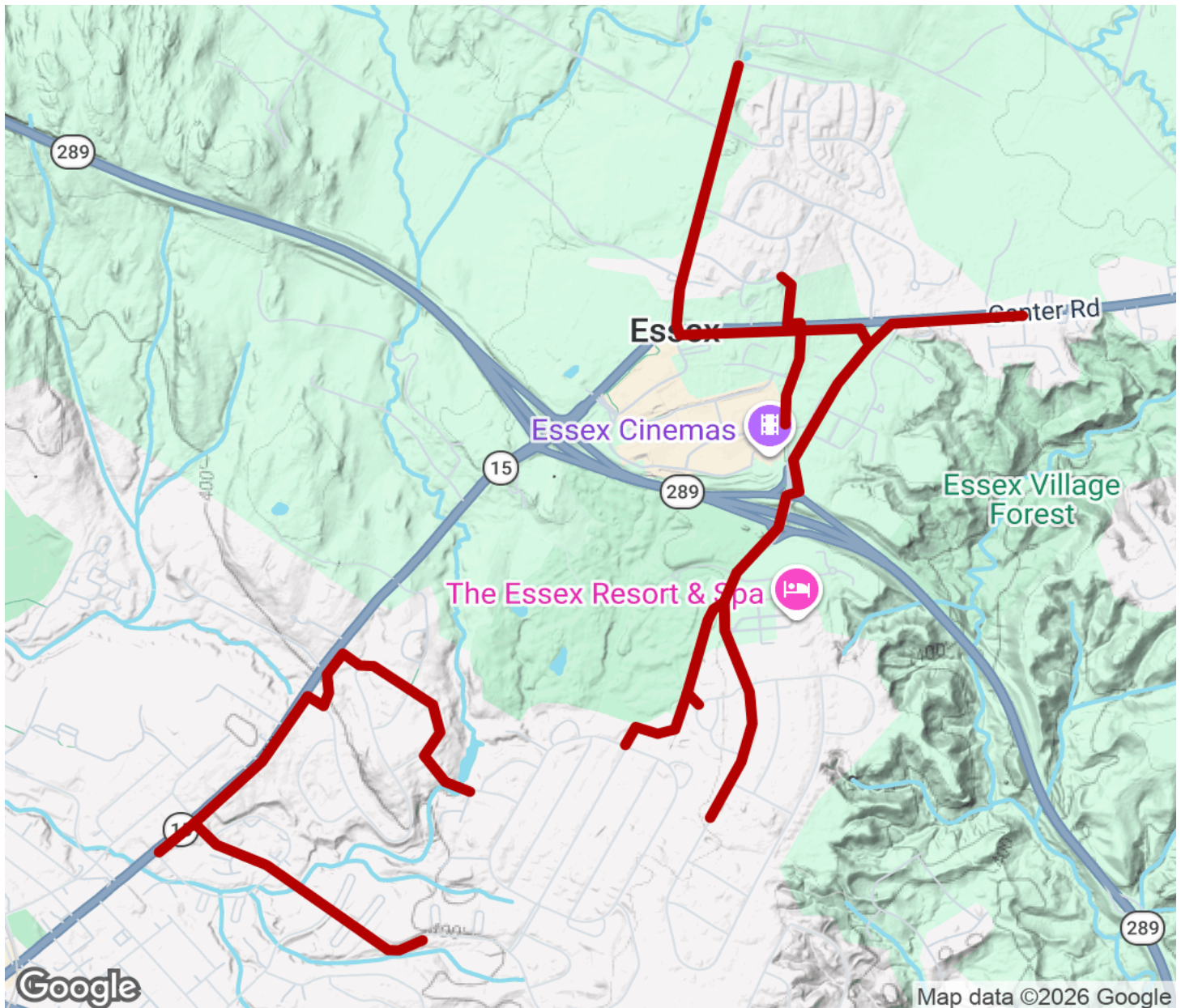
Parking & Trail Access

There is no official parking for the bike paths but parking is available in downtown Essex Junction.



Essex Bike Paths

Vermont



Trailhead



Restroom



Parking



Water Fountain



Tunnel



TrailLink
by Rails-to-Trails Conservancy

TrailLink.com