



2026

TrailLink Unlimited



Guides



## Essex Bike Paths

*Vermont*



## Essex Bike Paths

Vermont

*The Essex Bike Paths comprise two segments on the northeast side of Essex Junction Village, forming a spiderweb of paved routes*



The Essex Bike Paths comprise two segments on the northeast side of Essex Junction Village, forming a spiderweb of paved routes throughout neighborhoods and a shopping mall near the intersection of State Routes 15 and 289. From the southwest segment you can easily link to downtown Essex Junction along Main Street by continuing along a sidewalk. To link the two disconnected segments, use Beech Street and Hubbells Falls Drive along sidewalks. The link is less than a 0.5 mile.



## Essex Bike Paths

Vermont

**States:** Vermont

**Counties:** Chittenden

Length: 4.7miles

**Trail end points:** Willoughby Dr. to Beech St.  
and also Sidney Dr. to Main St. at Densmore Dr.  
to Hubbells Falls Dr. and also to Brickyard Rd.

**Trail surfaces:** Asphalt

**Trail category:** Greenway/Non-RT

**Trail activities:** Bike,Inline

Skating, Walking, Wheelchair Accessible, Cross  
Country Skiing

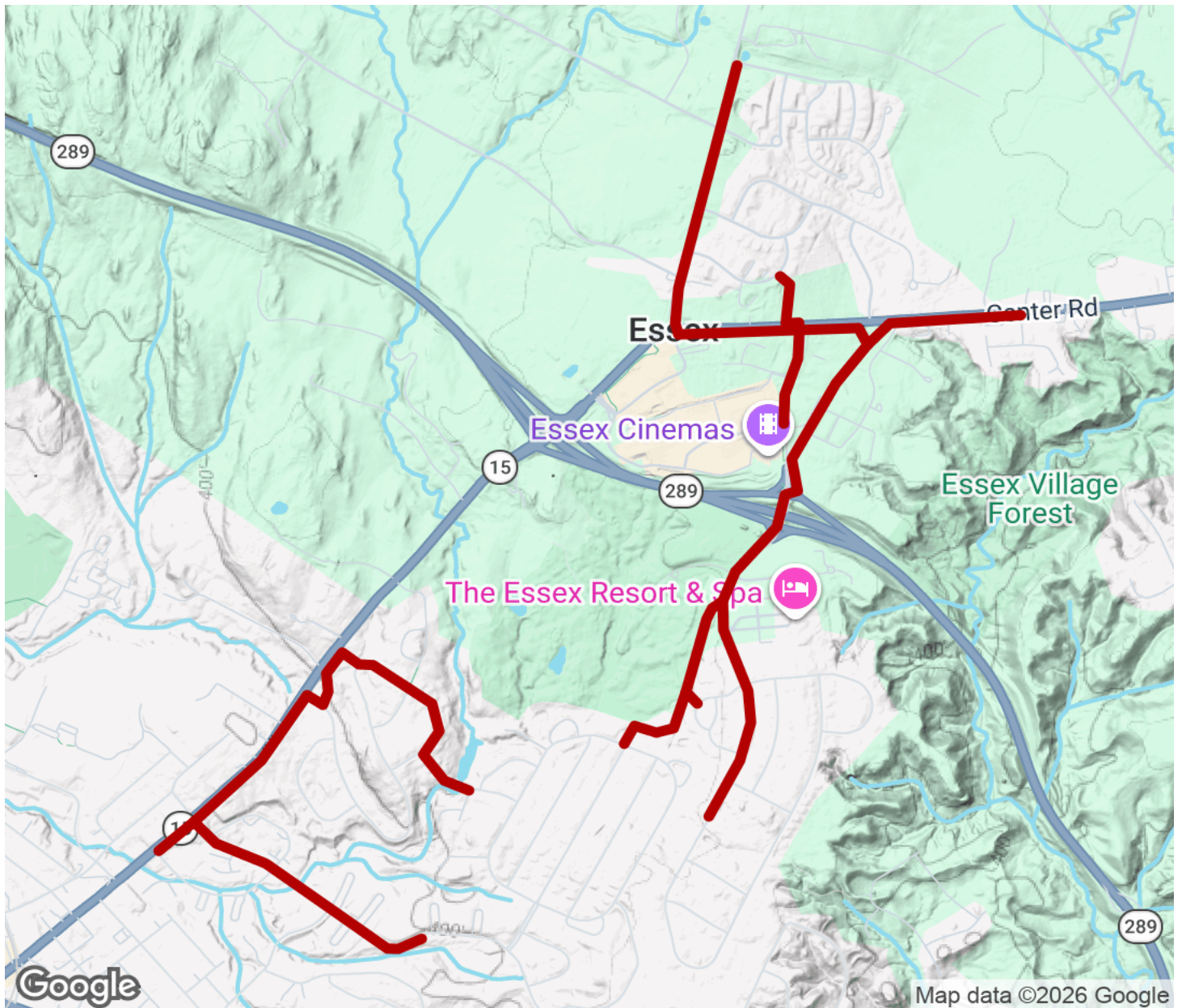
## Parking & Trail Access

There is no official parking for the bike paths but parking is available in downtown Essex Junction.



# Essex Bike Paths

Vermont



Trailhead



Restroom



Parking



Water Fountain



Tunnel



**TrailLink**  
by Rails-to-Trails Conservancy

**TrailLink.com**