



2025

TrailLink Unlimited 

Guides



**Seaside
Nature Trail**
Delaware



Seaside Nature Trail

Delaware

The Seaside Nature Trail in Cape Henlopen State Park takes visitors to the Seaside Nature Center around a nearly 1-mile rustic



The Seaside Nature Trail in Cape Henlopen State Park takes visitors to the Seaside Nature Center around a nearly 1-mile rustic loop. A short stretch at the trail's northernmost point runs on a beach along Delaware Bay, from where you can continue to walk miles of beach at your leisure.

The trail has a flat but sandy surface, so hiking is the only permitted activity. Along the trail's short route, hikers will catch a glimpse of pine forest remnants, as well as dramatic views of the Delaware Bay and Delaware Breakwater East End Light in the distance. The trail links to the paved [Cape Henlopen State Park Bike Loop](#) along Post Lane near the Seaside Nature Center.



TrailLink
by Rails-to-Trails Conservancy

TrailLink.com



Seaside Nature Trail

Delaware

States: Delaware

Counties: Sussex

Length: 0.7miles

Trail end points: Seaside Nature Center to
Seaside Nature Center

Trail surfaces: Sand

Trail category: Greenway/Non-RT

Trail activities: Walking

Parking & Trail Access

To access Cape Henlopen State Park from downtown Lewes, Delaware, follow Savannah Road and signs for the Lewes Terminal that provides ferry trips to Cape May, New Jersey. Turn right on Cape Henlopen Drive and follow it to the park entrance. There is a \$10 park entry fee for automobiles (in-state drivers pay \$5). Parking is available at the Seaside Nature Center on Post Lane.



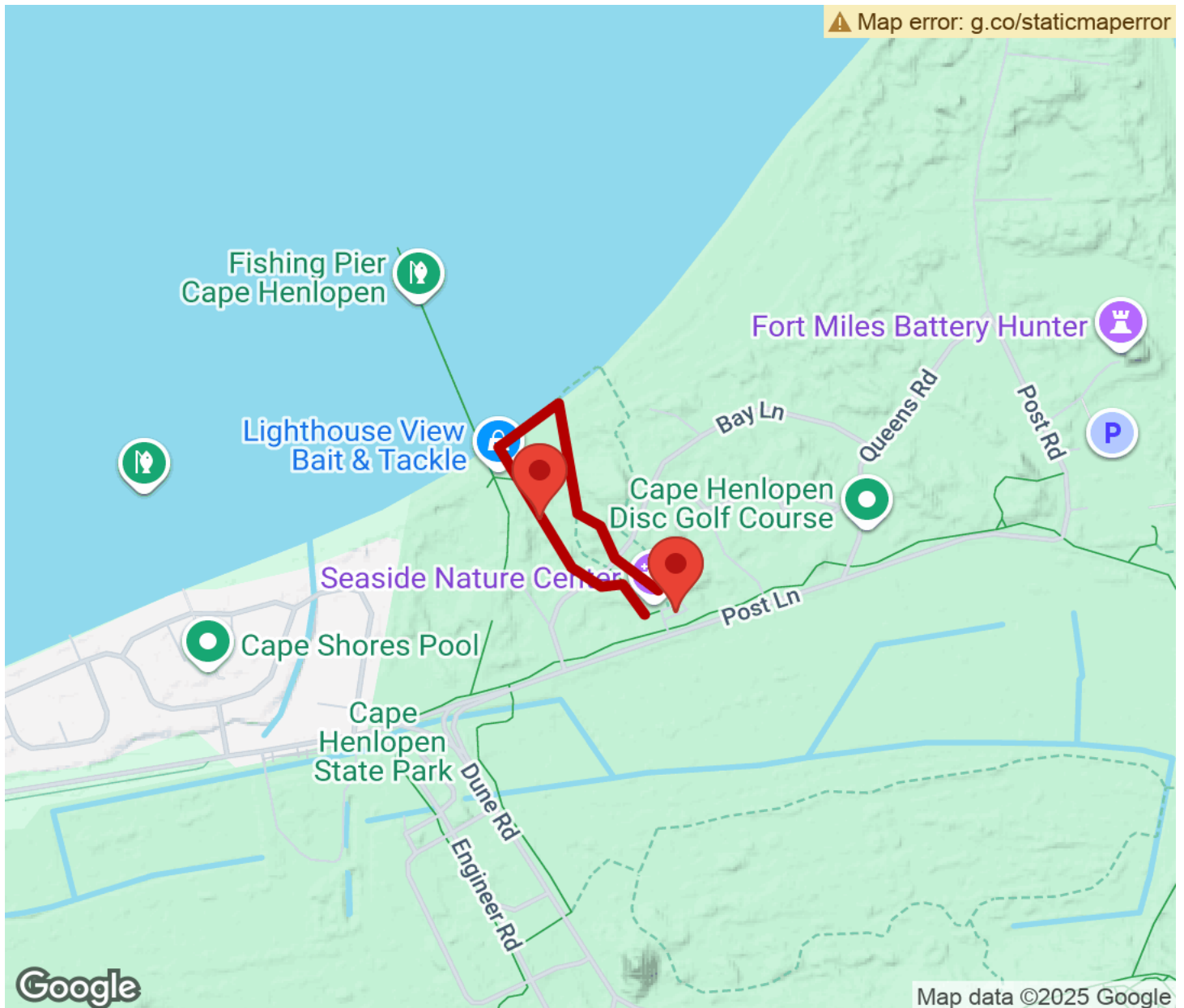
TrailLink
by Rails-to-Trails Conservancy

TrailLink.com



Seaside Nature Trail

Delaware



Trailhead



Restroom



Parking



Water Fountain



Tunnel



TrailLink
by Rails-to-Trails Conservancy

TrailLink.com