



2024

TrailLink Unlimited 

Guides



## Mill Creek Greenway (TN)

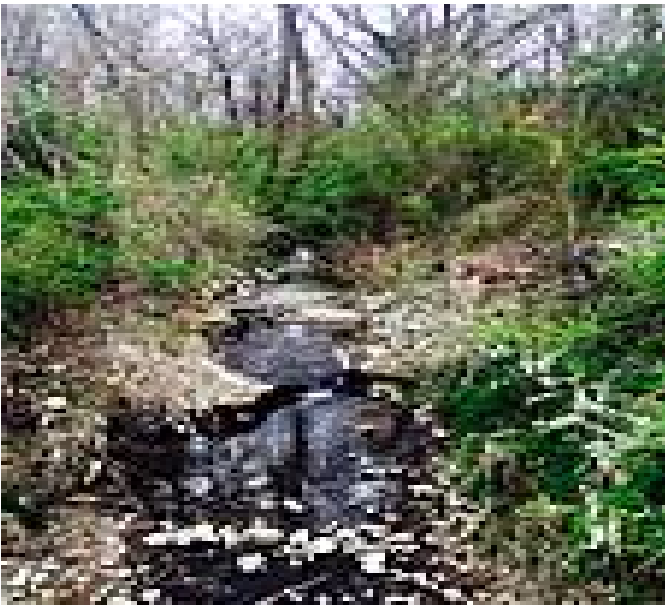
*Tennessee*



## Mill Creek Greenway (TN)

Tennessee

*Mill Creek Greenway is one of many forming Nashville's system of greenways throughout the city. Nashville's greenways link*



Mill Creek Greenway is one of many forming Nashville's system of greenways throughout the city. Nashville's greenways link neighborhoods, schools, shopping areas, the downtown area, offices, recreation areas, open spaces and other points of interest.

The Mill Creek Greenway consists of two non-contiguous segments, known locally as Blue Hole Road and Ezell Park. The Blue Hole Road section loops 1.8 miles around Antioch Park through a wooded area, beginning at the Antioch Community Center. The Ezell Park section (1.25 miles) begins in the park and follows the creek, crosses SR 255/Harding Place and ends along McGavock Pike.



# Mill Creek Greenway (TN)

Tennessee

**States:** Tennessee

**Counties:** Davidson

Length: 3miles

**Trail end points:** Antioch Park to Ezell Road  
Park

**Trail surfaces:** Asphalt

**Trail category:** Greenway/Non-RT

**Trail activities:** Bike, Inline

Skating, Wheelchair Accessible, Walking

## Parking & Trail Access

You can access the greenway at the following places:

**Blue Hole Road section,** Antioch Community Center, 5023  
Blue Hole Road

**Ezell Park section,** Ezell Park, 5135 Harding Place.

For more information, contact:

Nashville Parks & Recreation

511 Oman Street

Nashville, Tennessee 37203

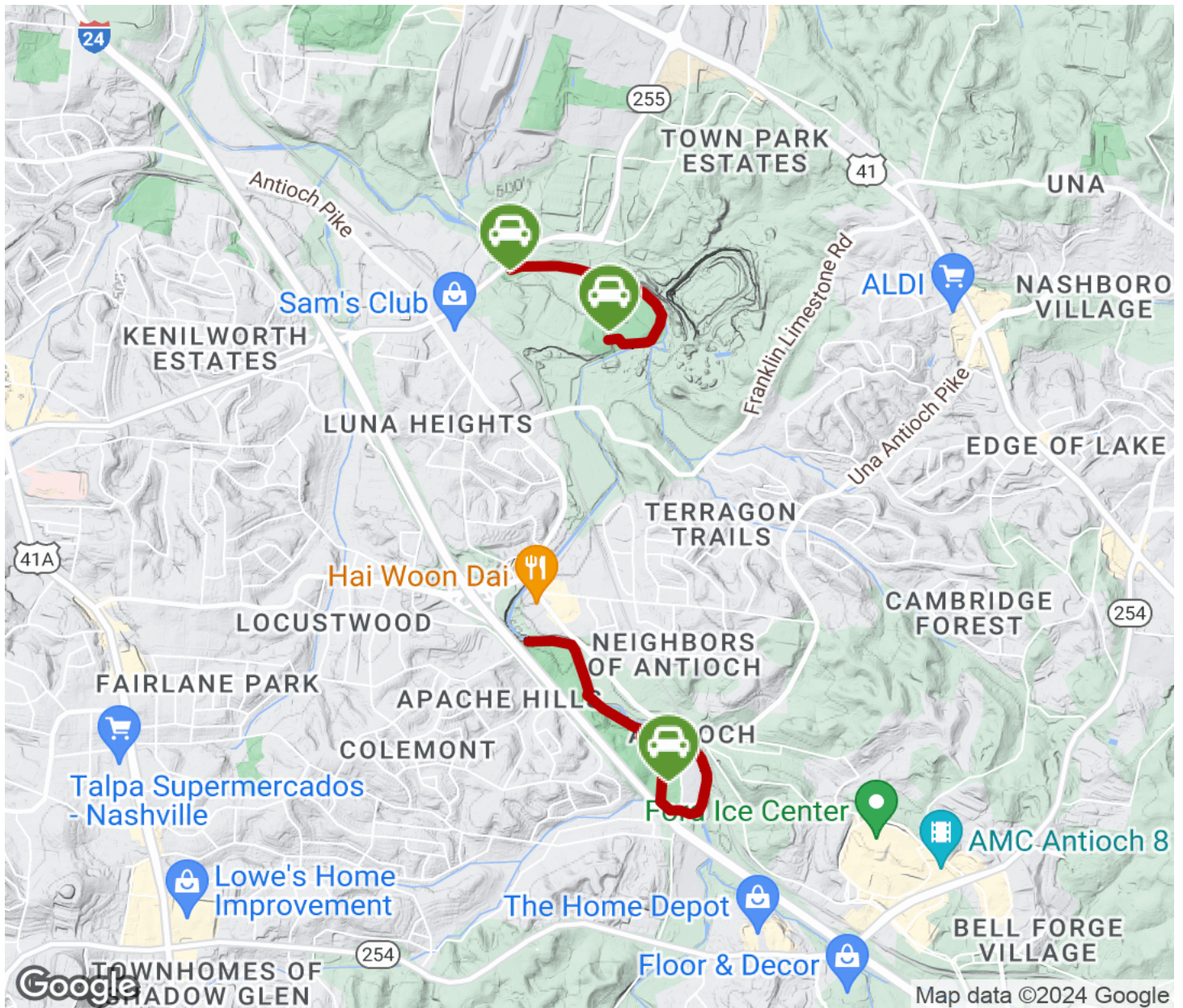
615-862-8400

[www.nashville.gov/parks/about/contactus.asp](http://www.nashville.gov/parks/about/contactus.asp)



# Mill Creek Greenway (TN)

Tennessee



Trailhead



Restroom



Parking



Water Fountain



Tunnel



**TrailLink**  
by Rails-to-Trails Conservancy

**TrailLink.com**