



2025

TrailLink Unlimited 

Guides



## Mill Creek Greenway (TN)

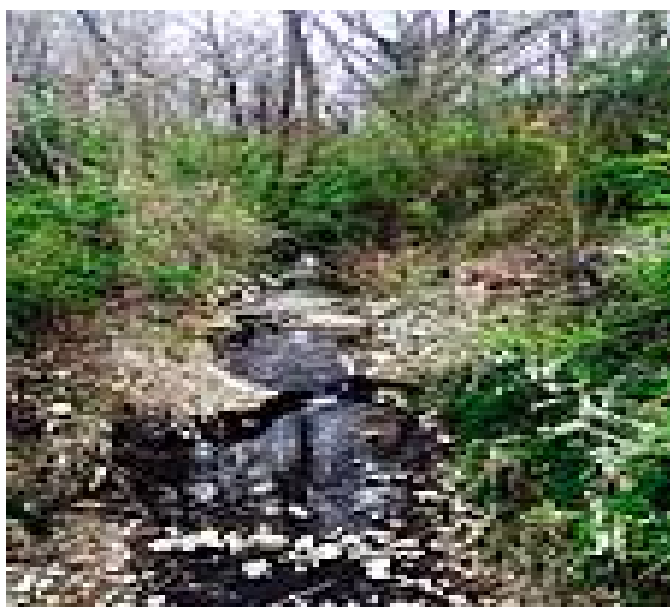
*Tennessee*



## Mill Creek Greenway (TN)

Tennessee

*Mill Creek Greenway is a 9.8-mile route, formed from six discontinuous trail sections, and is one of many forming*



The Whitsett Park segment is 1.2 miles long and provides trail users with creek access and features a playground, picnic area, and community garden.

The Ezell Park segment is 1.3 miles long and offers creek access. South of that, the Blue Hole Road segment that runs through Antioch Park is 1.8 miles and connects the Antioch Community Center and Antioch Middle School.

The Rivendell segment is a one-mile loop through the Rivendell subdivision and is just north of the 2.5-mile Orchard Bend Park Segment. This park offers soccer fields, playgrounds, creek access, and access to nearby elementary and middle school campuses.

Mill Creek Park and Orchard Bend Park are connected via the trail and this section heads south through Mill Creek Park as well across a 2-mile section.

Mill Creek Greenway is a 9.8-mile route, formed from six discontinuous trail sections, and is one of many forming Nashville's system of greenways throughout the city. Nashville's greenways link neighborhoods, schools, shopping areas, the downtown area, offices, recreation areas, open spaces, and other points of interest. The trail runs through Whitsett Park, Ezell Park, Antioch Park, Orchard Bend Park, and Mill Creek Park.

### About the Route

The Mill Creek Greenway consists of six non-contiguous segments that run through Whitsett Park, Ezell Park, Antioch Park, Orchard Bend Park, and Mill Creek Park (listed north-south).



# Mill Creek Greenway (TN)

Tennessee

**States:** Tennessee

**Counties:** Davidson

Length: 9.8miles

**Trail end points:** Whitsett Park, 375 Wimpole Dr. (Nashville) to Mill Creek Park, Sunnywood Dr. (Antioch)

**Trail surfaces:** Asphalt

**Trail category:** Greenway/Non-RT

**Trail activities:** Bike,Inline

Skating,Wheelchair Accessible,Walking

## Parking & Trail Access

The Mill Creek Greenway runs in six distinct segments through Whitsett Park, Ezell Park, Antioch Park, Orchard Bend Park, and Mill Creek Park.

Parking is available at each park:

- Whitsett Park, 375 Wimpole Dr. (Nashville)
- Ezell Park, 2485-3299 Old Ezell Rd (Nashville)
- Antioch Park, 5023 Blue Hole Rd. (Antioch)
- Orchard Bend Park, 5605 Pettus Rd. (Antioch)
- Mill Creek Park, Sunnywood Dr. (Antioch)

Please see [TrailLink Map](#) for detailed directions.



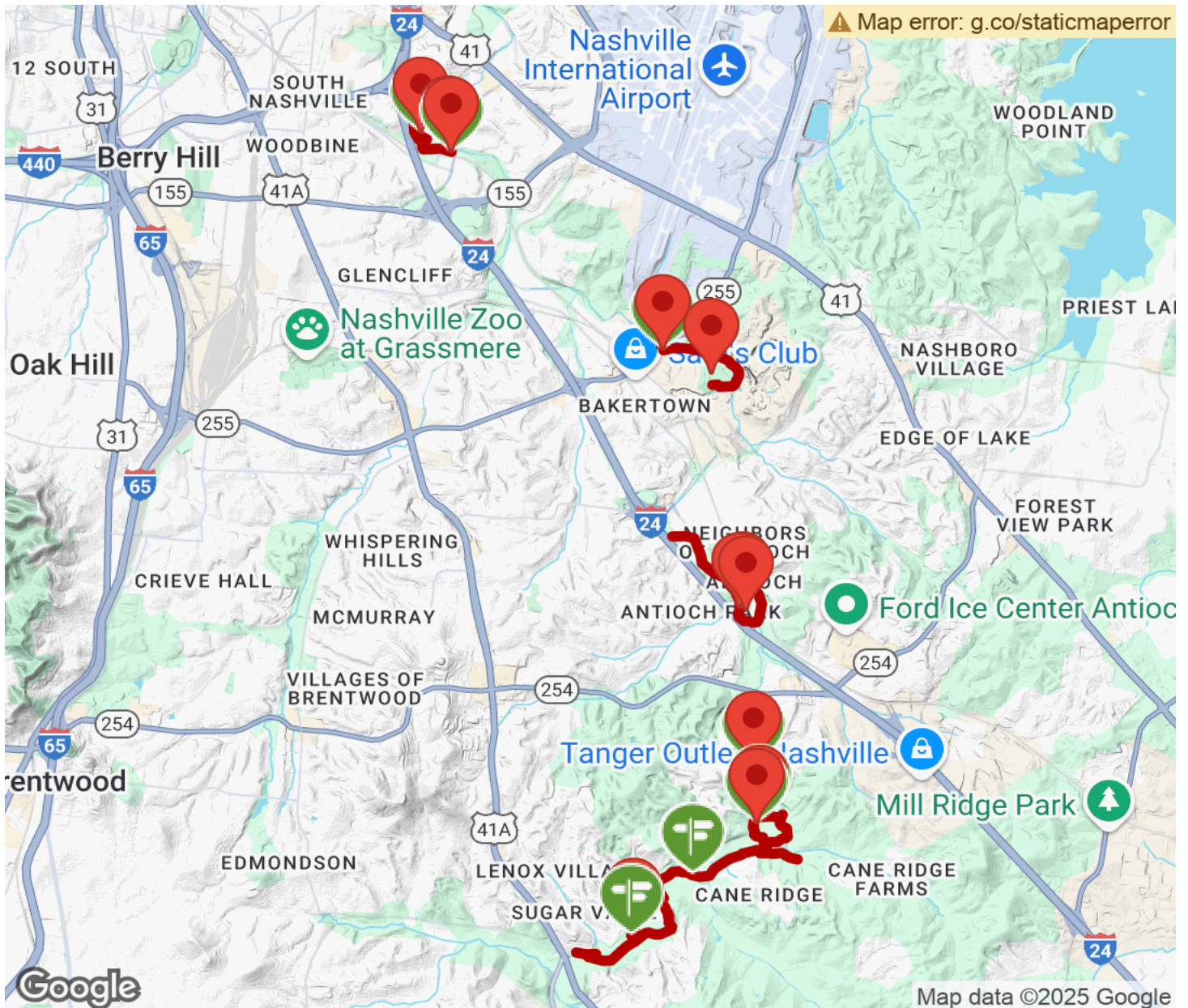
**TrailLink**  
by Rails-to-Trails Conservancy

**TrailLink.com**



# Mill Creek Greenway (TN)

Tennessee



Trailhead



Restroom



Parking



Water Fountain



Tunnel



**TrailLink**  
by Rails-to-Trails Conservancy

**TrailLink.com**