



2026

TrailLink Unlimited



Guides



# Highline Lateral Canal Path

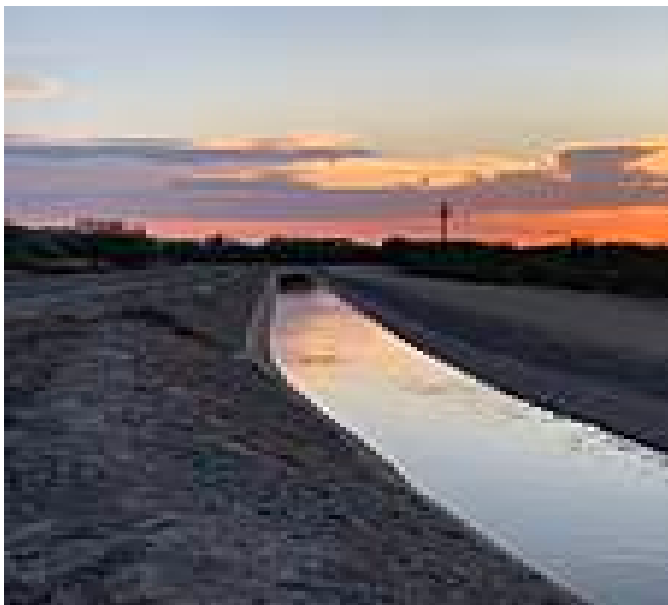
*Arizona*



## Highline Lateral Canal Path

Arizona

*The Highline Lateral Canal Path runs along its namesake waterway through the Arizona cities of Phoenix and Tempe and the*



and Circle K Park offer recreational amenities, picnic areas and restrooms.

The Highline Lateral Canal Path runs along its namesake waterway through the Arizona cities of Phoenix and Tempe and the smaller town of Guadalupe. Open in several disconnected segments, the trail features both paved and gravel-surfaced sections, and the scenery varies from suburban homes to shopping centers to open fields with views of nearby hills.

The longest continuous portion runs between W. South Mountain Avenue and Interstate 10 in Phoenix, although a tricky crossing of E. Baseline Road is a challenge on the eastern end. The trail has been improved with a paved surface on the south side of the canal between E. Baseline Road and S. Central Avenue along this stretch, making it the most popular with local residents. Just off (and reachable from) the trail, both Francisco Highland Park



# Highline Lateral Canal Path

Arizona

**States:** Arizona

**Counties:** Maricopa

Length: 10.4miles

**Trail end points:** W. South Mountain Ave. and S. 6th Ave. to S. 44th St. and E. Mountain Skye Ave.

**Trail surfaces:** Asphalt,Gravel

**Trail category:** Greenway/Non-RT

**Trail activities:** Bike,Inline

Skating,Walking,Wheelchair Accessible

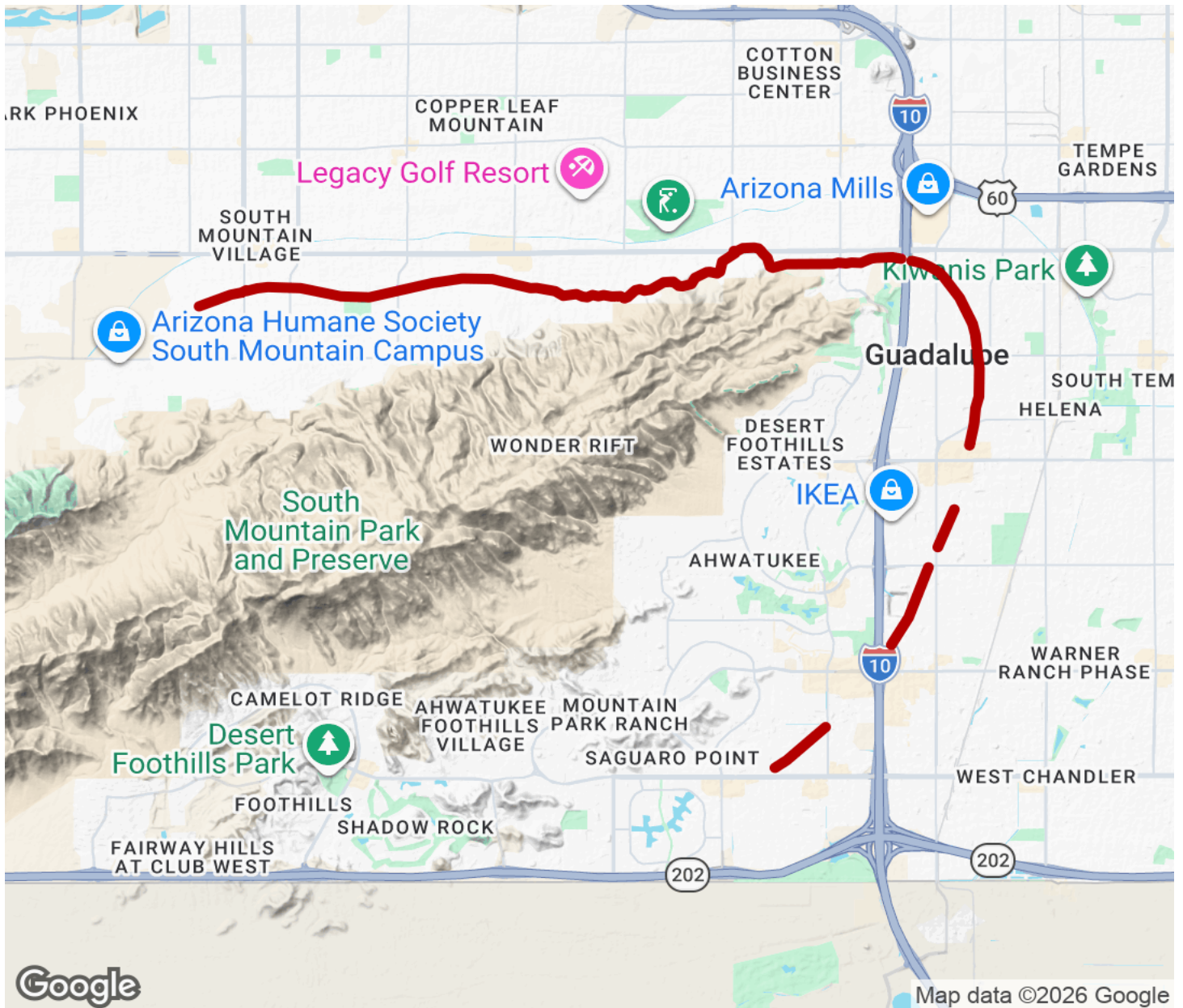
## Parking & Trail Access

Parking for the Highline Lateral Canal Path is available at Francisco Highland Park (2702 E. South Mountain Avenue) and Circle K Park (1346 E. South Mountain Road) in Phoenix.



# Highline Lateral Canal Path

Arizona



Trailhead



Restroom



Parking



Water Fountain



Tunnel



**TrailLink**  
by Rails-to-Trails Conservancy

**TrailLink.com**