



2025

TrailLink Unlimited 

Guides



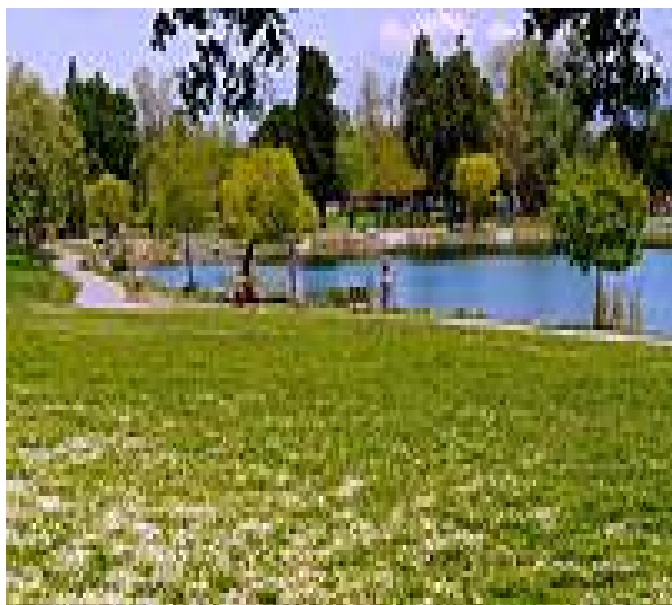
**Silver Creek
Valley Trail**
California



Silver Creek Valley Trail

California

Silver Creek Valley Trail follows its namesake creek and paralleling Silver Creek Valley Road. The passes through a country



Silver Creek Valley Trail follows its namesake creek and paralleling Silver Creek Valley Road. The passes through a country club neighborhood and through open space over a steep hill. The trail offers nice views of the creek and hillsides, branching into two segments at its southern end. The trail forks at Farnsworth Drive and Silver Creek Valley Road, each segment following the respective roads. The eastern fork ends at San Felipe Road; the western segment ends at Hellyer Avenue.

Segments of the forked trail are steep: south of the Silver Creek Valley Country Club and also between Silver Oak Elementary School and Farnsworth Drive.



TrailLink
by Rails-to-Trails Conservancy

TrailLink.com



Silver Creek Valley Trail

California

States: California

Counties: Santa Clara

Length: 4miles

Trail end points: Hassler Pkway to Hellyer Ave. to Hassler Pkway to San Felipe Rd.

Trail surfaces: Asphalt

Trail category: Greenway/Non-RT

Trail activities: Bike,Inline

Skating,Wheelchair Accessible,Walking

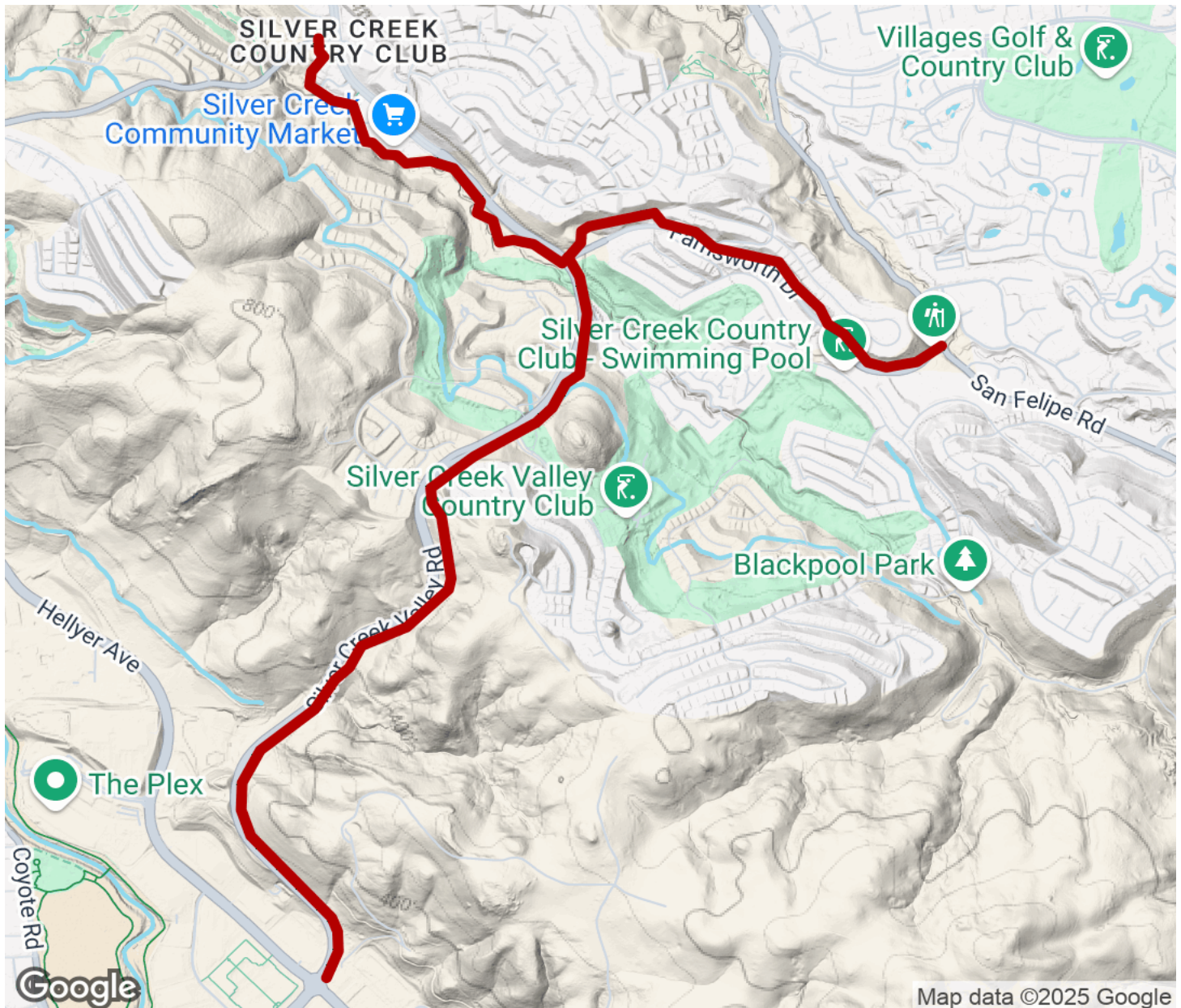
Parking & Trail Access

There is no official parking for the trail but you can park at the shopping plaza off Silver Creek Valley Road near Darylview Court (northern end) and at Hellyer Avenue and Silver Creek Valley Road (seek permission first from business owners). You may also be able to park at the plaza near San Felipe Road but seek permission first and use caution when crossing Farnsworth Drive to access the trail.



Silver Creek Valley Trail

California



Map data ©2025 Google



Trailhead



Restroom



Parking



Water Fountain



Tunnel



TrailLink
by Rails-to-Trails Conservancy

TrailLink.com