



2024

TrailLink Unlimited



Guides



**Dick & Willie  
Passage Rail  
Trail**  
*Virginia*



## Dick & Willie Passage Rail Trail

Virginia

*The Dick & Willie Passage Rail Trail runs for 4.5 miles on a former Danville & Western Railroad corridor, which was acquired by*



Mulberry Creek in the area's secluded woodlands. In the southwest there are two disconnected segments that will one day connect to the longer Martinsville section to form an 11 mile trail in total.

At Pine Street in Martinsville, the [Uptown Spur Trail](#) branches off from the Dick & Willie Passage Rail Trail on a former railroad spur to head towards the city's charming downtown. Benches along both trails provide opportunities to relax and take in the beautiful surroundings.

The Dick & Willie Passage Rail Trail runs for 4.5 miles on a former Danville & Western Railroad corridor, which was acquired by Southern Railway in 1920 and ultimately abandoned by its successor, Norfolk Southern, in 2009. The original railroad was affectionately known as the "Dick & Willie" after its initials.

The paved trail passes through the heart of Martinsville, with short sections on both ends outside city limits in Henry County. Underpasses and restored trestles provide safe crossings of busy roads; there are only two at-grade crossings along the trail's entire length, and these are at low-traffic, rural roads.

In the east, a dead end forces trail users to turn around, but you will want to linger at a scenic overlook of



# Dick & Willie Passage Rail Trail

Virginia

**States:** Virginia

**Counties:** Henry, Martinsville

Length: 7.79 miles

**Trail end points:** Virginia Ave. north of Commonwealth Blvd. (Villa Heights) to Mulberry Creek Overlook northeast of Fishel St. (Martinsville)

**Trail surfaces:** Asphalt

**Trail category:** Rail-Trail

**Trail activities:** Bike, Inline Skating, Wheelchair Accessible, Walking

## Parking & Trail Access

Ample parking for the Dick & Willie Passage Rail Trail is available at the western trailhead off Virginia Avenue/US 220 Business in Villa Heights. Access the parking lot from the shopping center at the corner of Virginia Avenue and Commonwealth Boulevard.

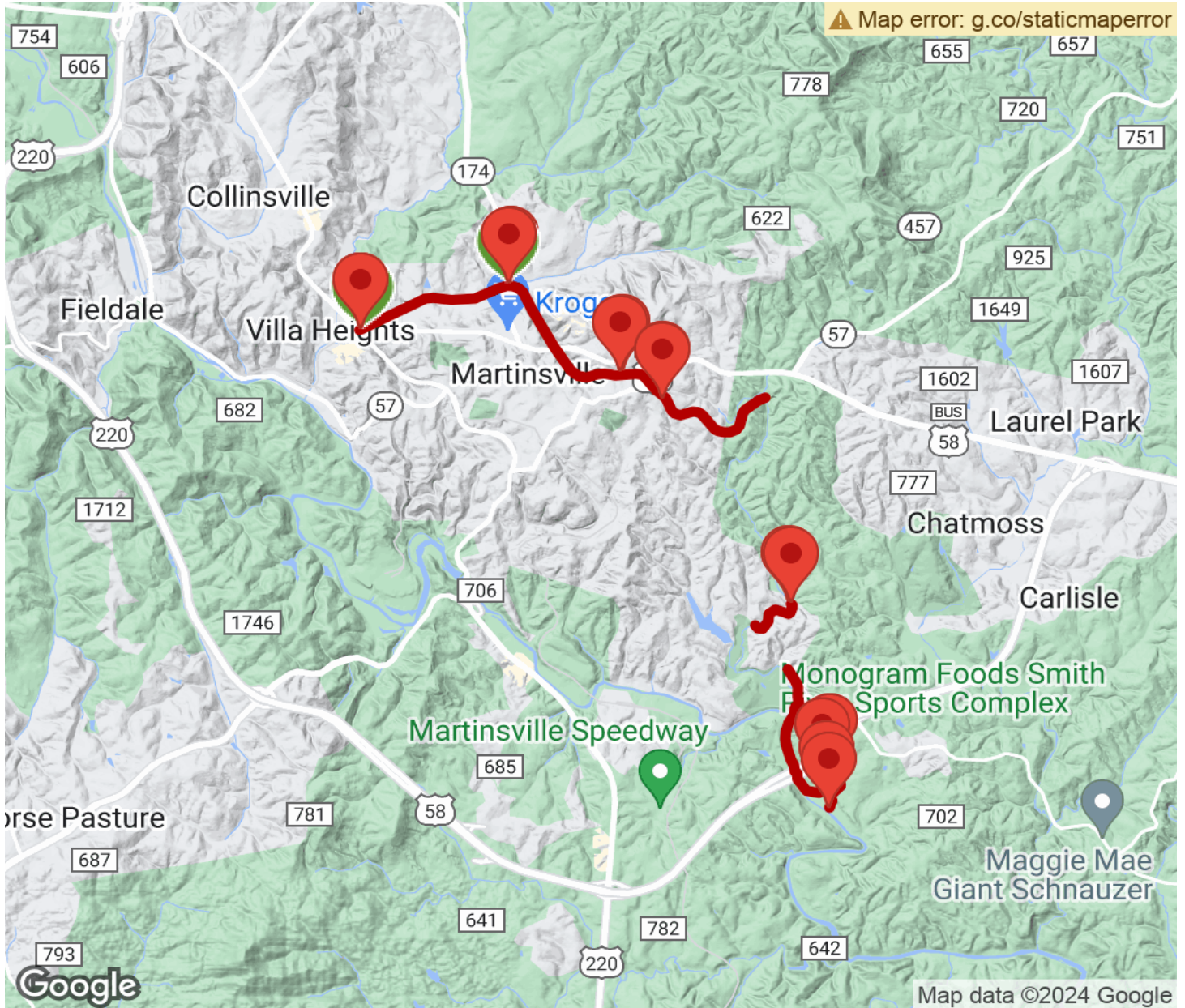
Additional parking and restrooms are available in Martinsville at trailheads located at the intersection of Liberty Street and Stultz Road; Doyle Street and Hooker Street; and Fisher Street and Fishel Street (remnants of an original trestle can be viewed here).

Along the southern sections of the trail there is parking on Spruce St. and at the Smith River Sports Complex, 1000 Irisburg Rd.



# Dick & Willie Passage Rail Trail

Virginia



Trailhead



Restroom



Parking



Water Fountain



Tunnel



**TrailLink**  
by Rails-to-Trails Conservancy

**TrailLink.com**