



2024

TrailLink Unlimited



Guides



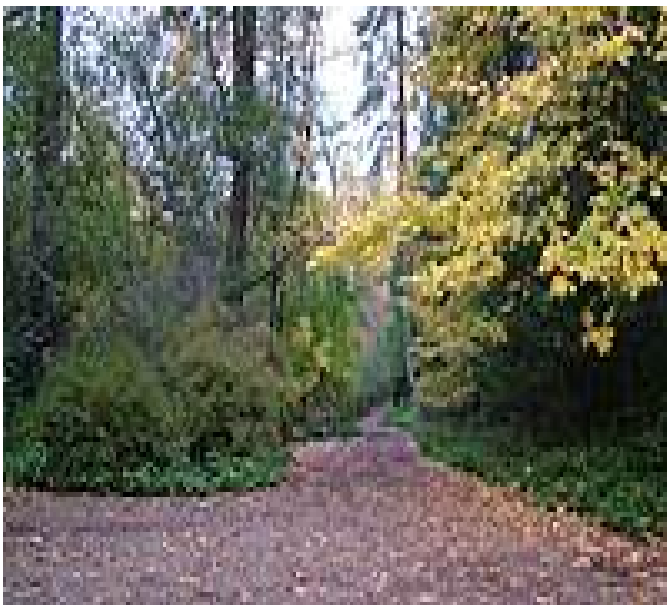
**Lithia Park  
Trail**  
*Oregon*



## Lithia Park Trail

Oregon

*Although the Lithia Park Trail is short (just 0.5 mile), the park itself has rich history and is listed on the National Register of Historic*



Although the Lithia Park Trail is short (just 0.5 mile), the park itself has rich history and is listed on the National Register of Historic Places. In 1892 the Chautauqua Association brought entertainment and culture to this part of Oregon, and since, the park has grown to become Ashland's pride and joy.

The park was designed by landscape architect John McLaren (designer of San Francisco's Golden Gate Park) in the tradition of Frederick Law Olmsted (of Central Park fame in NYC). Thus, beautiful plants and water features alone are worth the visit, including the towering Tree of Heaven. Park headquarters provides a walking tour map that shows the location of the park's charming assets, including significant trees, fountains, and terraces.



# Lithia Park Trail

Oregon

**States:** Oregon

**Counties:** Jackson

Length: 0.5miles

**Trail end points:** S. Pioneer Street to Granite Street (Lithia Park, Ashland)

**Trail surfaces:** Gravel

**Trail category:** Greenway/Non-RT

**Trail activities:** Bike, Wheelchair Accessible, Walking

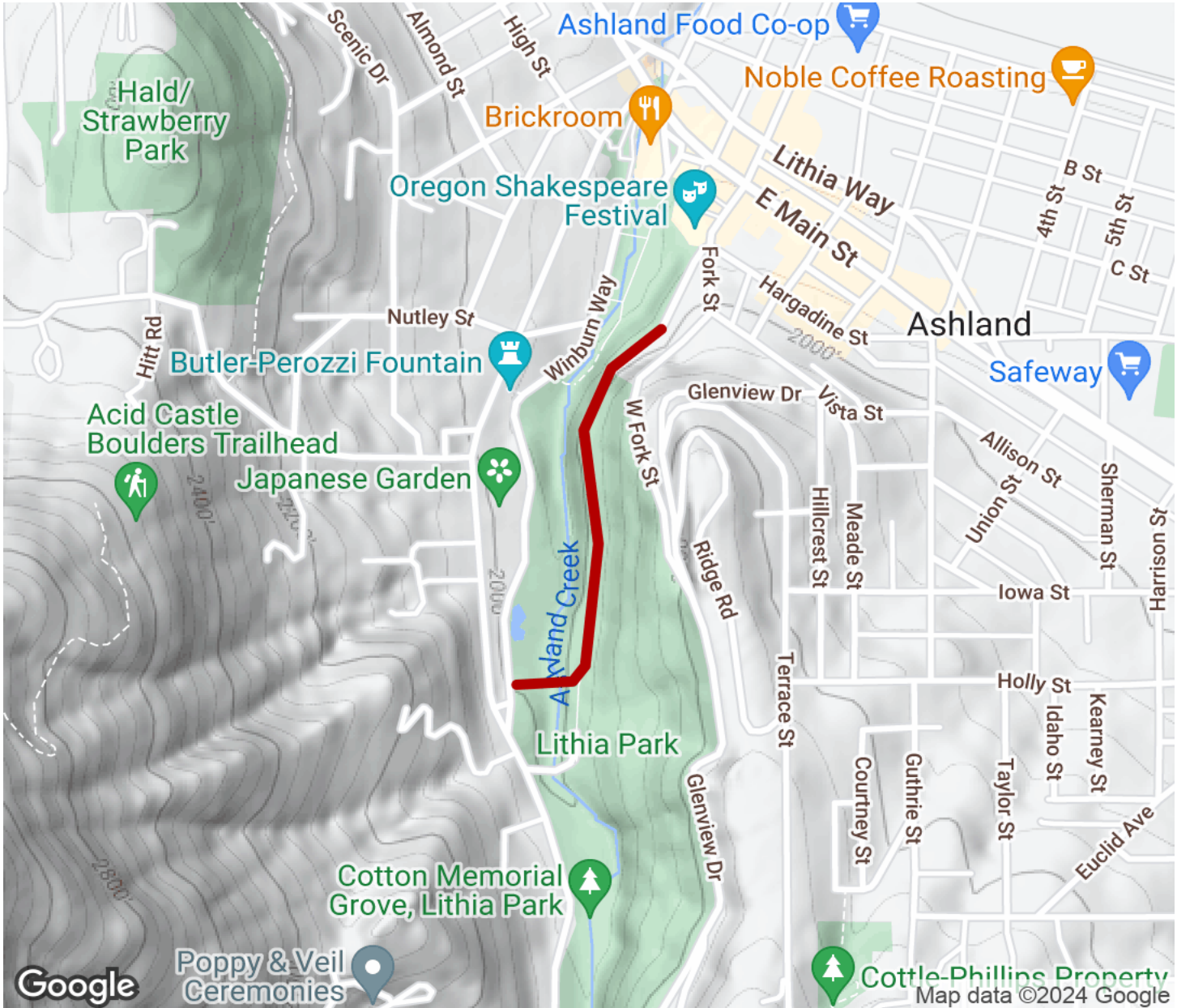
## Parking & Trail Access

Lithia Park is located at 59 Winburn Way in Ashland, Oregon.



# Lithia Park Trail

Oregon



Trailhead



Restroom



Parking



Water Fountain



Tunnel



**TrailLink**  
by Rails-to-Trails Conservancy

**TrailLink.com**