



2025

TrailLink Unlimited 

Guides



Bow & Arrow Trail

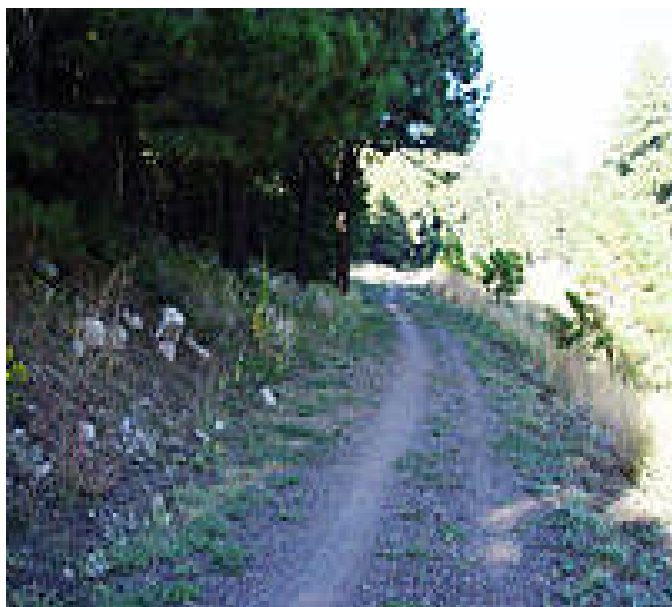
Arizona



Bow & Arrow Trail

Arizona

The Bow & Arrow Trail follows an arroyo of the same name in a scenic canyon near Flagstaff's Coconino County Community



The Bow & Arrow Trail follows an arroyo of the same name in a scenic canyon near Flagstaff's Coconino County Community College. The trail runs east and west of Lone Tree Road near the campus and parallels Zuni Drive. The trail intersects with [Lone Tree Trail](#) at Lone Tree Road and Zuni Drive. There are plans to extend the Bow & Arrow Trail east to the [Arizona Trail](#).



TrailLink
by Rails-to-Trails Conservancy

TrailLink.com



Bow & Arrow Trail

Arizona

States: Arizona

Counties: Coconino

Length: 0.8miles

Trail end points: E. Zuni Drive nr. Leupp Drive
to East of Lone Tree Road nr. campus

Trail surfaces: Dirt,Gravel

Trail category: Greenway/Non-RT

Trail activities: Bike,Mountain
Biking,Walking

Parking & Trail Access

Access the trail from its western end along Zuni Drive (a small pull-out for parking is available) or near its intersection with Lone Tree Road (limited parking).



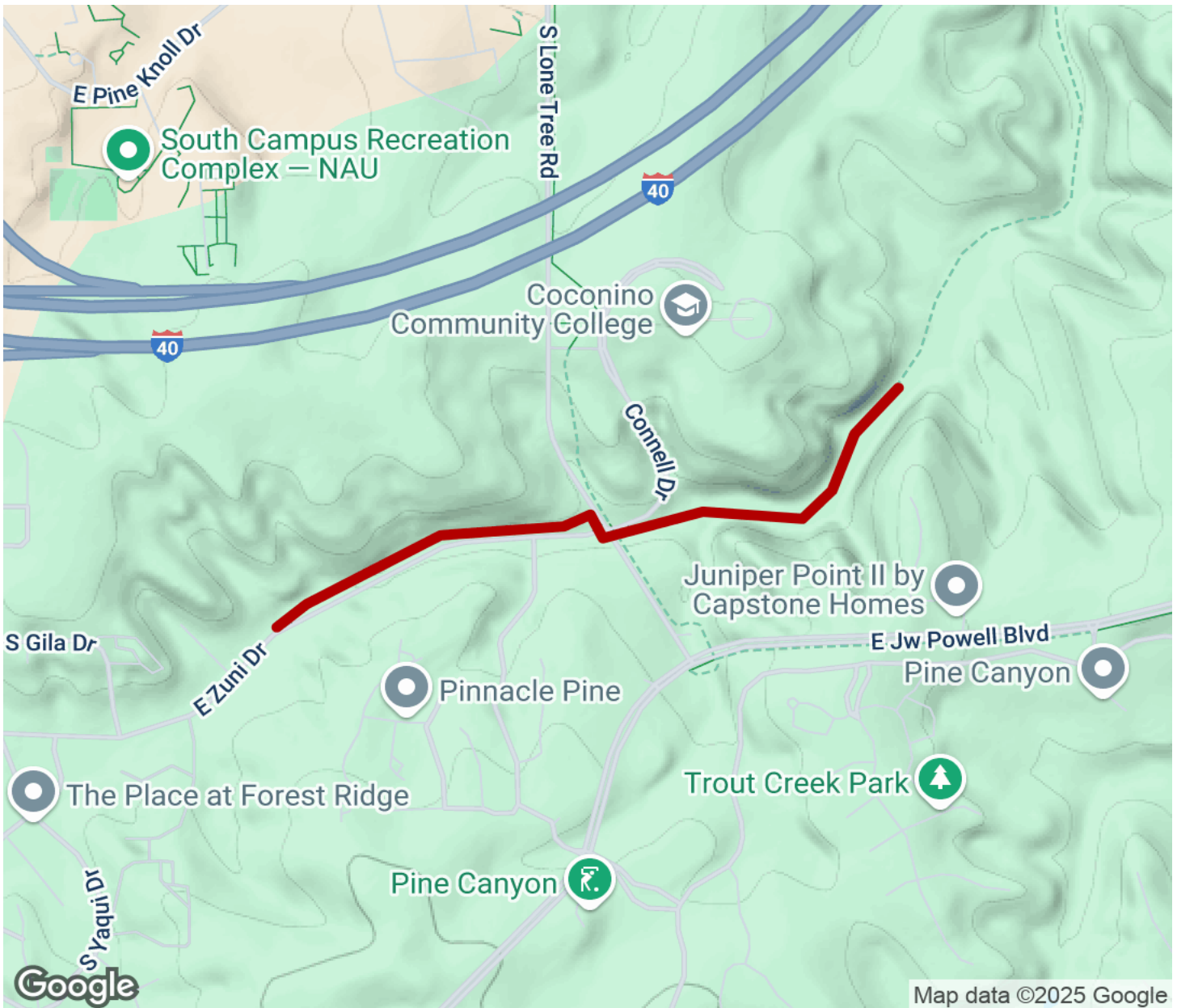
TrailLink
by Rails-to-Trails Conservancy

TrailLink.com



Bow & Arrow Trail

Arizona



Trailhead



Restroom



Parking



Water Fountain



Tunnel



TrailLink
by Rails-to-Trails Conservancy

TrailLink.com