



2024

TrailLink Unlimited



Guides



**Harris Road
Trail**
Virginia



Harris Road Trail

Virginia

The Harris Road Trail parallels Harris Road on the east side, through the neighborhoods south of Lynnhaven Bay in Virginia



The Harris Road Trail parallels Harris Road on the east side, through the neighborhoods south of Lynnhaven Bay in Virginia Beach. The short trail runs between Little Neck Road and Kline Drive. At the south end, you can pick up the [Little Neck Road Trail](#) and follow it north or south.



Harris Road Trail

Virginia

States: Virginia

Counties: Virginia Beach

Length: 0.6miles

Trail end points: Little Neck Rd. to Kline Dr.
(Virginia Beach)

Trail surfaces: Asphalt, Concrete

Trail category: Greenway/Non-RT

Trail activities: Bike, Wheelchair
Accessible, Walking

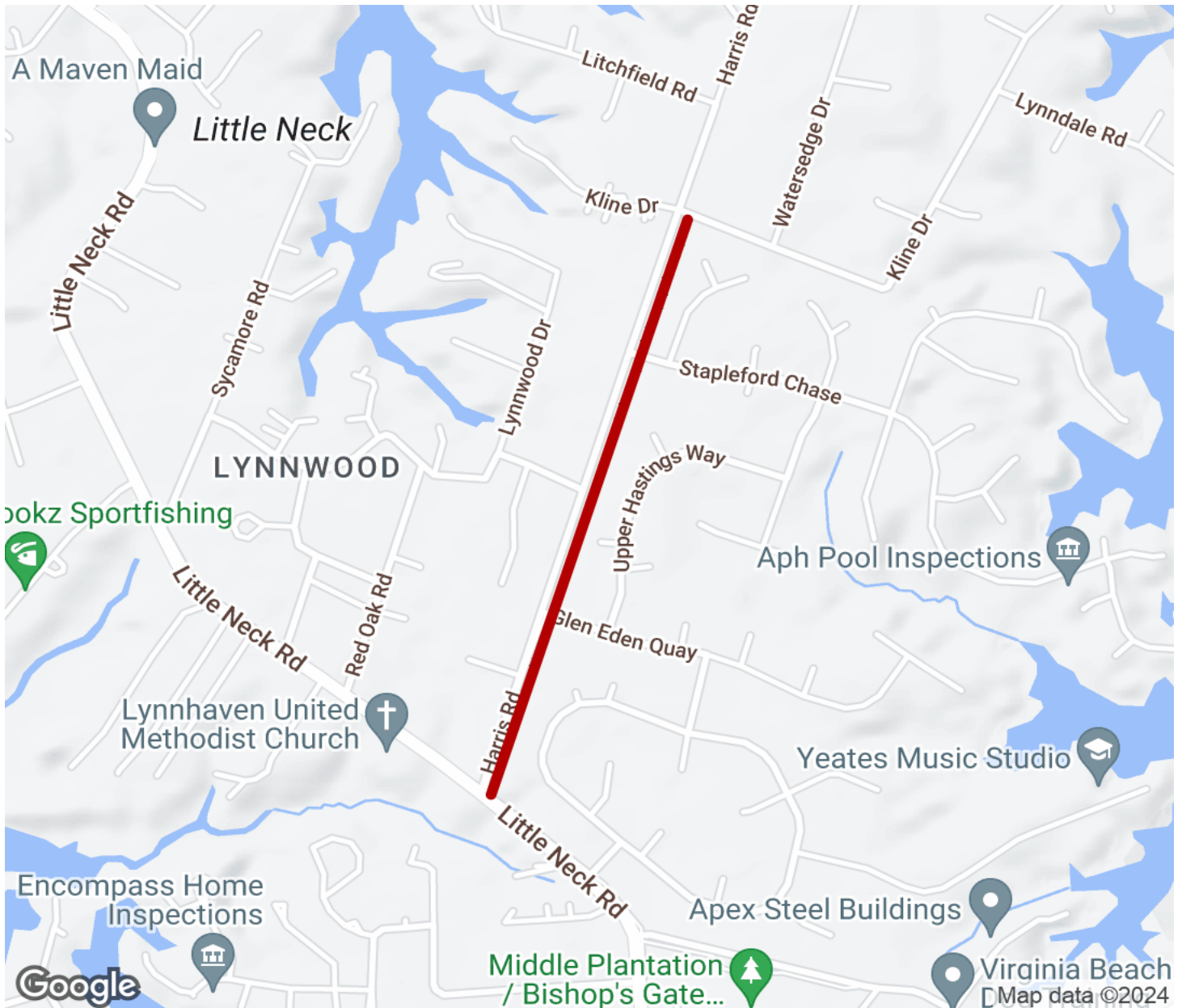
Parking & Trail Access

There is no official parking for the Harris Road Trail. Access is via local streets and sidewalks.



Harris Road Trail

Virginia



Trailhead



Restroom



Parking



Water Fountain



Tunnel



TrailLink

by Rails-to-Trails Conservancy

[TrailLink.com](https://www.TrailLink.com)