



2025

TrailLink Unlimited



Guides



## Harris Road Trail

*Virginia*



## Harris Road Trail

Virginia

*The Harris Road Trail parallels Harris Road on the east side, through the neighborhoods south of Lynnhaven Bay in Virginia*



The Harris Road Trail parallels Harris Road on the east side, through the neighborhoods south of Lynnhaven Bay in Virginia Beach. The short trail runs between Little Neck Road and Kline Drive. At the south end, you can pick up the [Little Neck Road Trail](#) and follow it north or south.



**TrailLink**  
by Rails-to-Trails Conservancy

**TrailLink.com**



# Harris Road Trail

Virginia

**States:** Virginia

**Counties:** Virginia Beach

**Length:** 0.6miles

**Trail end points:** Little Neck Rd. to Kline Dr.  
(Virginia Beach)

**Trail surfaces:** Asphalt, Concrete

**Trail category:** Greenway/Non-RT

**Trail activities:** Bike, Wheelchair  
Accessible, Walking

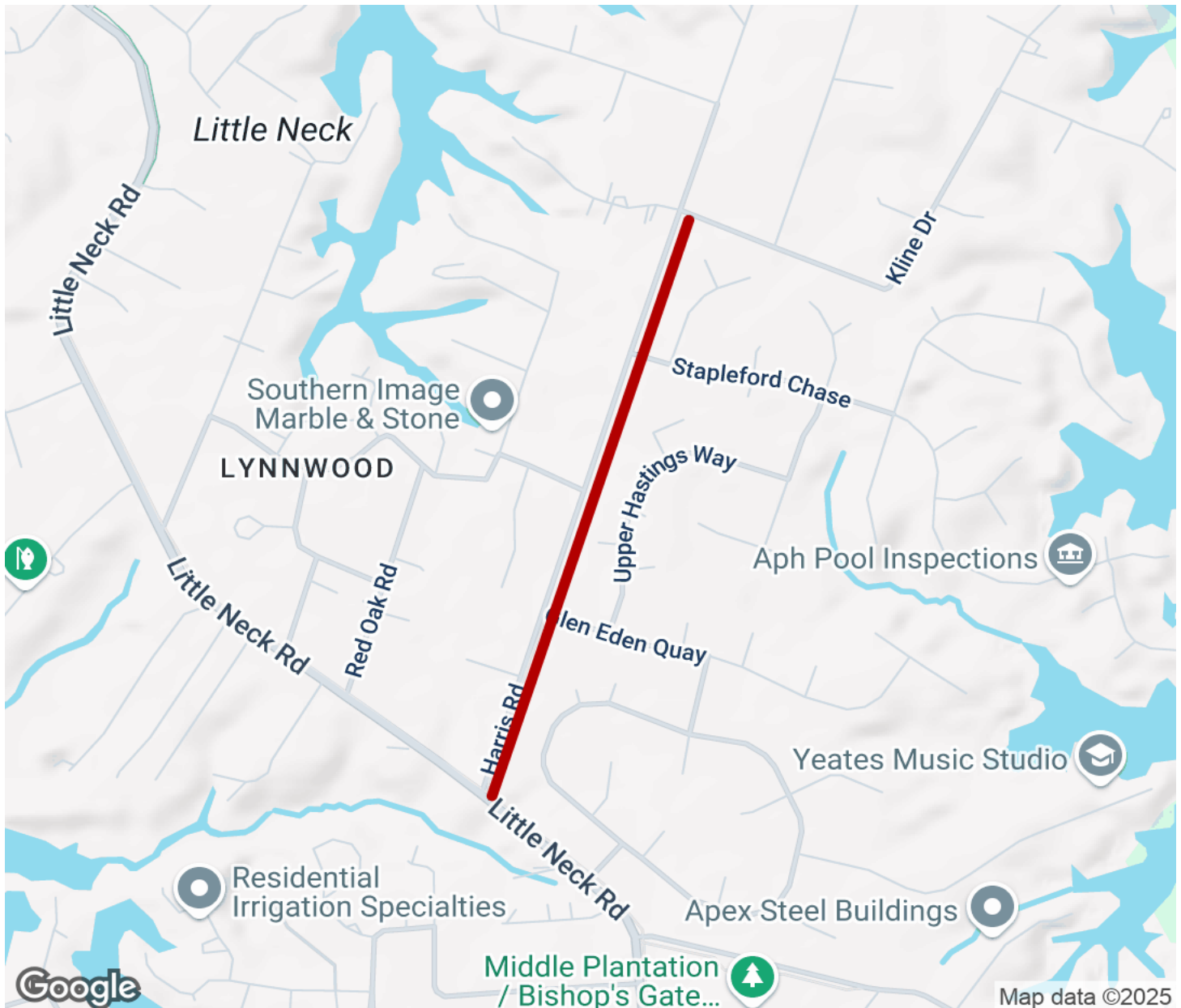
## Parking & Trail Access

There is no official parking for the Harris Road Trail. Access is via local streets and sidewalks.



# Harris Road Trail

Virginia



Trailhead



Restroom



Parking



Water Fountain



Tunnel



**TrailLink**  
by Rails-to-Trails Conservancy

**TrailLink.com**