



2026

TrailLink Unlimited 

Guides



**Harris Road
Trail**
Virginia



Harris Road Trail

Virginia

The Harris Road Trail parallels Harris Road on the east side, through the neighborhoods south of Lynnhaven Bay in Virginia



The Harris Road Trail parallels Harris Road on the east side, through the neighborhoods south of Lynnhaven Bay in Virginia Beach. The short trail runs between Little Neck Road and Kline Drive. At the south end, trail users can pick up the [Little Neck Road Trail](#).



TrailLink
by Rails-to-Trails Conservancy

TrailLink.com



Harris Road Trail

Virginia

States: Virginia

Counties: Virginia Beach

Length: 0.6miles

Trail end points: Little Neck Rd. to Kline Dr.
(Virginia Beach)

Trail surfaces: Asphalt, Concrete

Trail category: Greenway/Non-RT

Trail activities: Bike, Walking, Wheelchair
Accessible

Parking & Trail Access

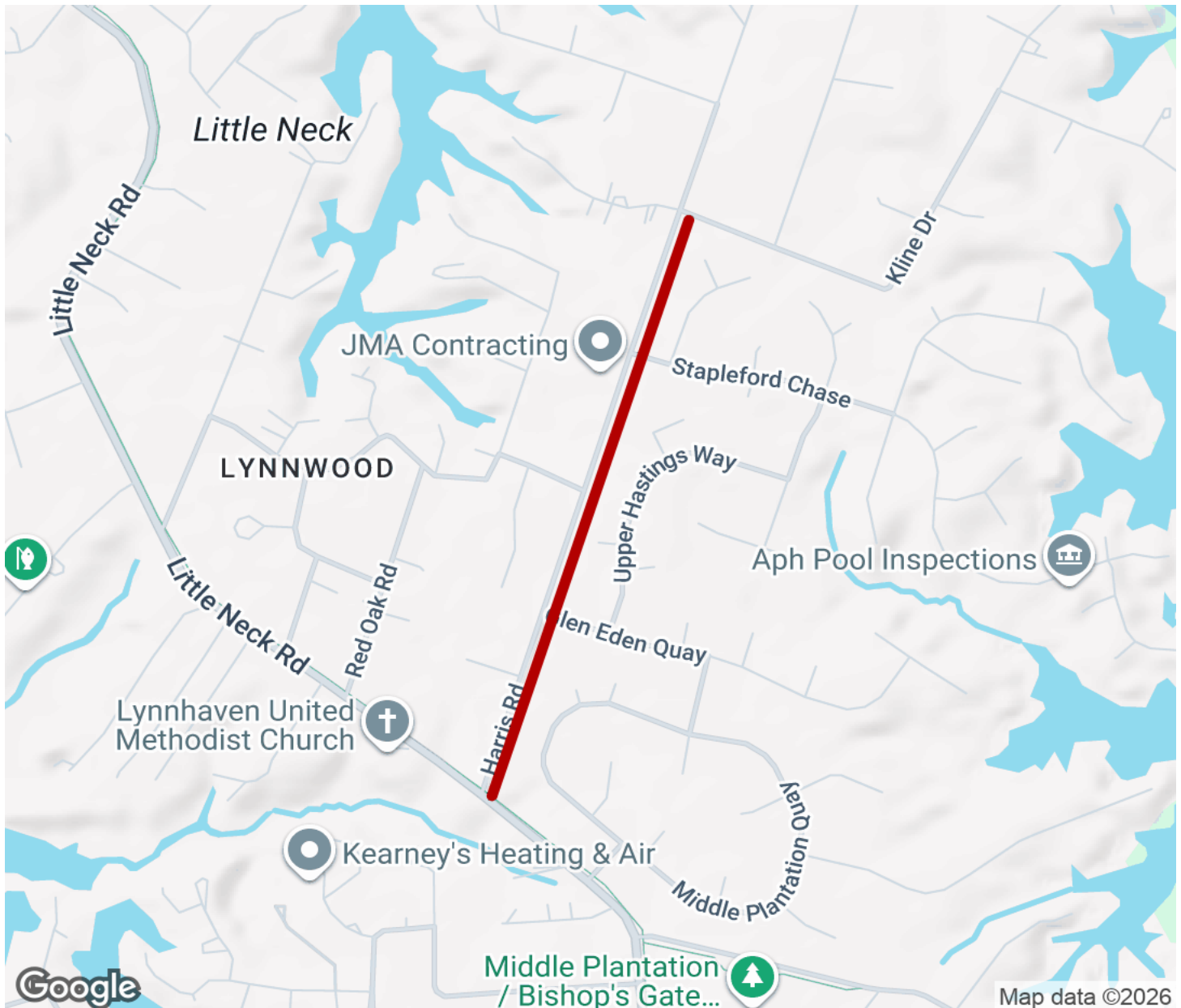
There is no designated parking for the Harris Road Trail.

Please see [TrailLink Map](#) for detailed directions.



Harris Road Trail

Virginia



Trailhead



Restroom



Parking



Water Fountain



Tunnel



TrailLink
by Rails-to-Trails Conservancy

TrailLink.com