



2025

TrailLink Unlimited 

Guides



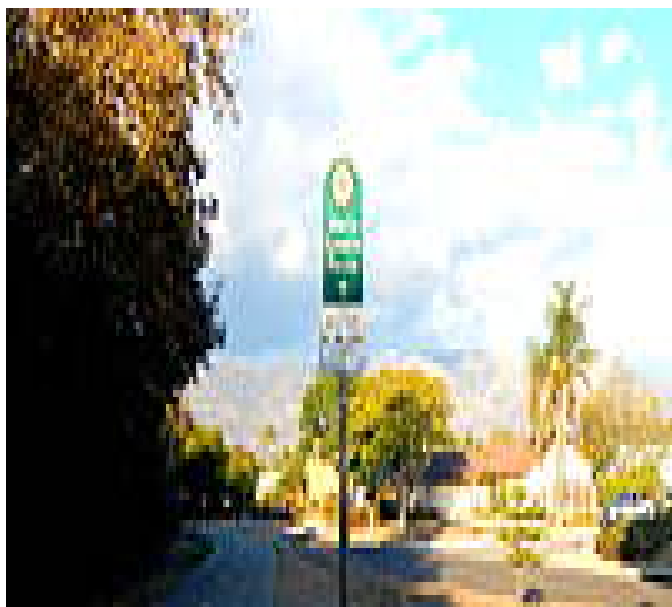
**Obern Trail**  
*California*



## Obern Trail

California

*Starting at Goleta Beach State Park, the Obern Trail (formerly known as Atascadero Creek Bike Path) travels east toward Santa*



Starting at Goleta Beach State Park, the Obern Trail (formerly known as Atascadero Creek Bike Path) travels east toward Santa Barbara's center, following a flood-control channel. The paved path is a popular commuter and recreation trail. Small wildlife and birds hang out in the native riparian habitat along the creek. The trail intersects the [Maria Ignacio Creek Trail](#) near Patterson Avenue.



**TrailLink**  
by Rails-to-Trails Conservancy

**TrailLink.com**



## Obern Trail

California

**States:** California

**Counties:** Santa Barbara

Length: 3.6miles

**Trail end points:** Sandspit Rd at Goleta Beach  
State Park to Arroyo Rd. (Santa Barbara)

**Trail surfaces:** Asphalt

**Trail category:** Greenway/Non-RT

**Trail activities:** Bike,Inline

Skating,Wheelchair Accessible,Horseback

Riding,Mountain Biking,Walking

## Parking & Trail Access

You can access the trail anywhere it crosses a road. Parking is at Goleta Beach State Park in Goleta. Take Moffett Place to Sandspit Road and park just before the bridge crossing the channel. From Ward Memorial Blvd. heading toward Santa Barbara, exit at Sandspit Road. From the boulevard heading toward Goleta, take the Moffett Place Exit and turn left on Sandspit Road. Park just before crossing the bridge (don't go over the channel).



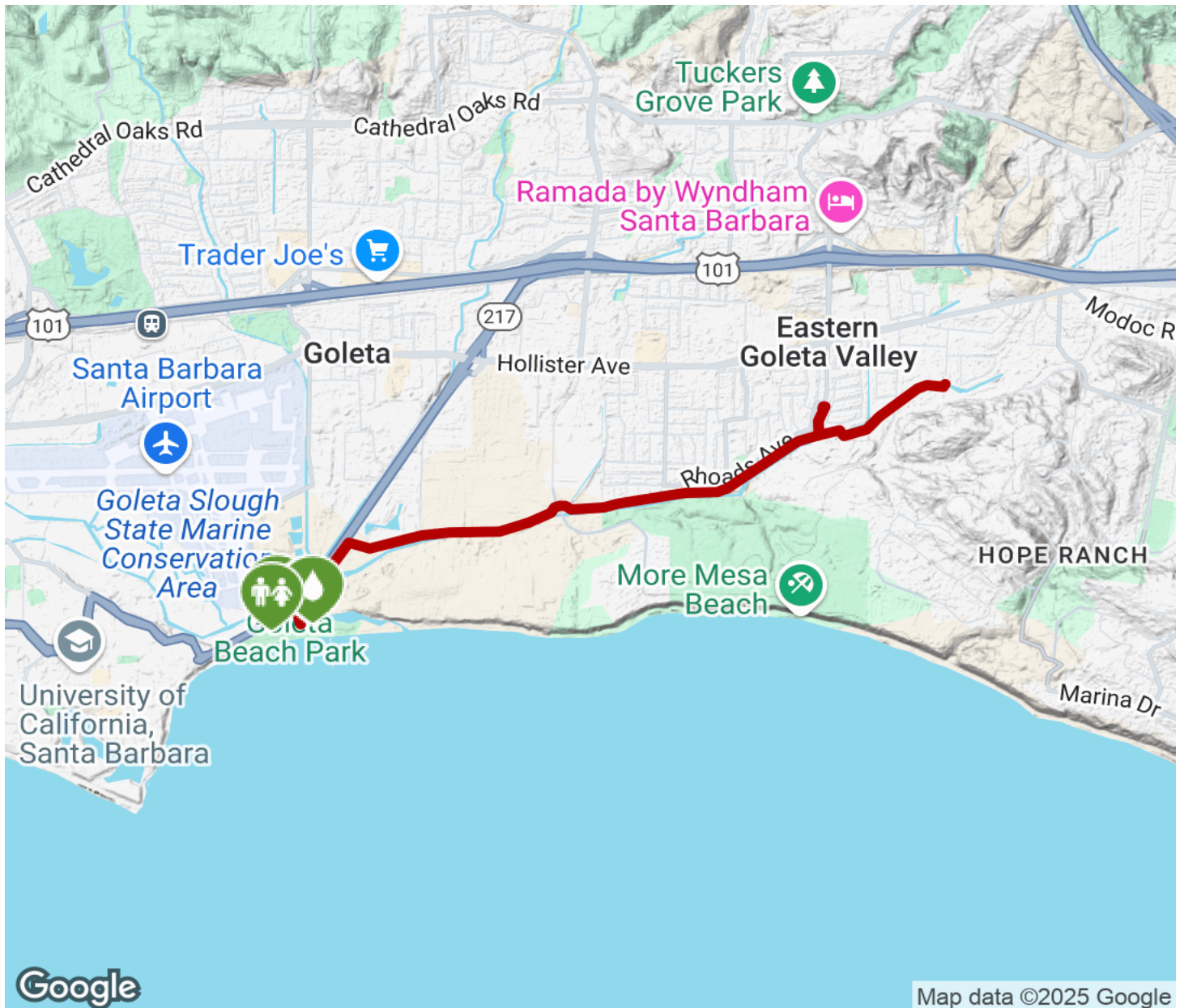
**TrailLink**  
by Rails-to-Trails Conservancy

**TrailLink.com**



# Obern Trail

California



Trailhead



Restroom



Parking



Water Fountain



Tunnel



**TrailLink**  
by Rails-to-Trails Conservancy

**TrailLink.com**