



2025

TrailLink Unlimited 

Guides



**Columbia  
Slough Trail**  
*Oregon*



## Columbia Slough Trail

Oregon

*The Columbia Slough Trail follows its namesake waterway on the northern end of Portland. Although there are currently gaps in the*



tables and an off-leash area for dogs.

To continue your adventure, you can hop on the trail's northern neighbor, the [Marine Drive Trail](#), which follows the Columbia River, or connect to the [Peninsula Crossing Trail](#), which heads southwest.

The Columbia Slough Trail follows its namesake waterway on the northern end of Portland. Although there are currently gaps in the trail, it will one day follow the entire length of the narrow 19-mile stream. When completed, the trail will be an important component of the 40-Mile Loop, a greenway that will encircle the city and extend to other parts of Multnomah County.

Although there are some industrial views along the way, the trail connects city dwellers to many natural areas. The pathway begins in Kelley Point Park, at the confluence of the Willamette and Columbia Rivers. Here, you can find a nice shady spot to picnic or watch ships traveling through the port. Further east is Delta Park, which abounds with recreational amenities, including football, soccer, and softball fields, a volleyball court, a playground, picnic



# Columbia Slough Trail

Oregon

**States:** Oregon

**Counties:** Multnomah

Length: 7.79miles

**Trail end points:** Kelley Point Park (Portland)  
to NE 185th Dr. (Portland)

**Trail surfaces:** Asphalt

**Trail category:** Greenway/Non-RT

**Trail activities:** Bike, Fishing, Wheelchair  
Accessible, Walking

## Parking & Trail Access

Parking can be found at Kelley Point Park (N. Marine Drive and Lombard Street) and Delta Park (10737 N. Union Court).



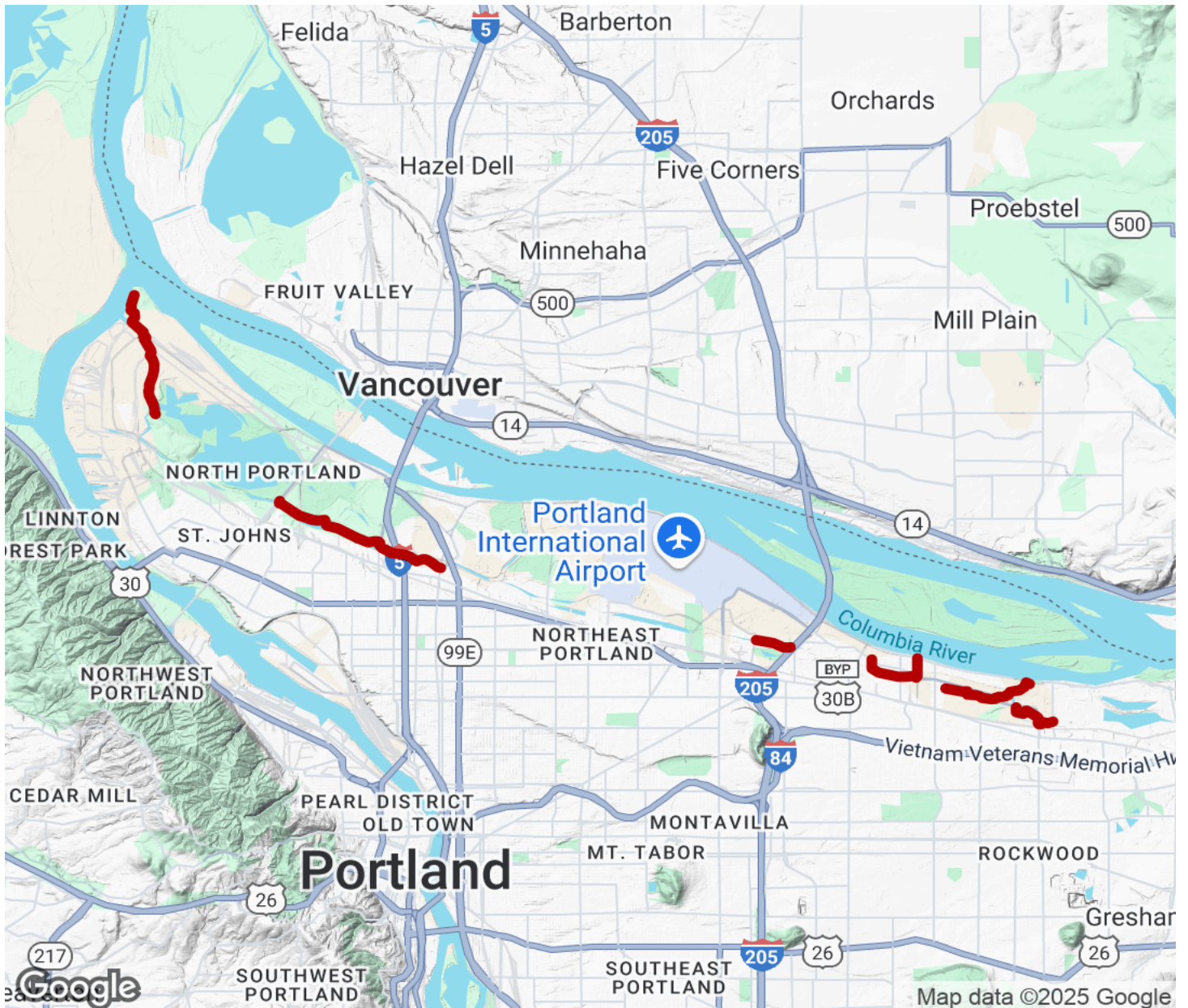
**TrailLink**  
by Rails-to-Trails Conservancy

**TrailLink.com**



# Columbia Slough Trail

Oregon



Trailhead



Restroom



Parking



Water Fountain



Tunnel



**TrailLink**  
by Rails-to-Trails Conservancy

**TrailLink.com**