



2026

TrailLink Unlimited 

Guides



**Salt Marsh
Spur**
Delaware



Salt Marsh Spur

Delaware

The roughly 1-mile Salt Marsh Spur bisects the popular Walking Dunes Trail in Cape Henlopen State Park. The sand trail runs from



The roughly 1-mile Salt Marsh Spur bisects the popular [Walking Dunes Trail](#) in Cape Henlopen State Park. The sand trail runs from the Biden Center, which offers meeting space and accommodations for groups, to tidal marshlands. Along the way, trail users are treated to a variety of local flora and fauna.

Along Dune Road, the Salt Marsh Spur connects to the [Gordons Pond Trail](#), which heads south more than 3 miles to scenic Gordons Pond.



TrailLink
by Rails-to-Trails Conservancy

TrailLink.com



Salt Marsh Spur

Delaware

States: Delaware

Counties: Sussex

Length: 1.2miles

Trail end points: Walking Dunes Trail at Dune Rd. to Cape Henlopen State Park

Trail surfaces: Sand

Trail category: Greenway/Non-RT

Trail activities: Mountain Biking, Walking

Parking & Trail Access

To access Cape Henlopen State Park from downtown Lewes, Delaware, follow Savannah Road and signs for the Lewes Terminal that provides ferry trips to Cape May, New Jersey. Turn right on Cape Henlopen Drive and follow it to the park entrance. There is a \$10 park entry fee for automobiles (in-state drivers pay \$5).

Parking is available at the Herring Point trailhead off Dune Road. From there, take either the Gordons Pond Trail or Walking Dunes Trail north along Dune Road to reach the Salt Marsh Spur.



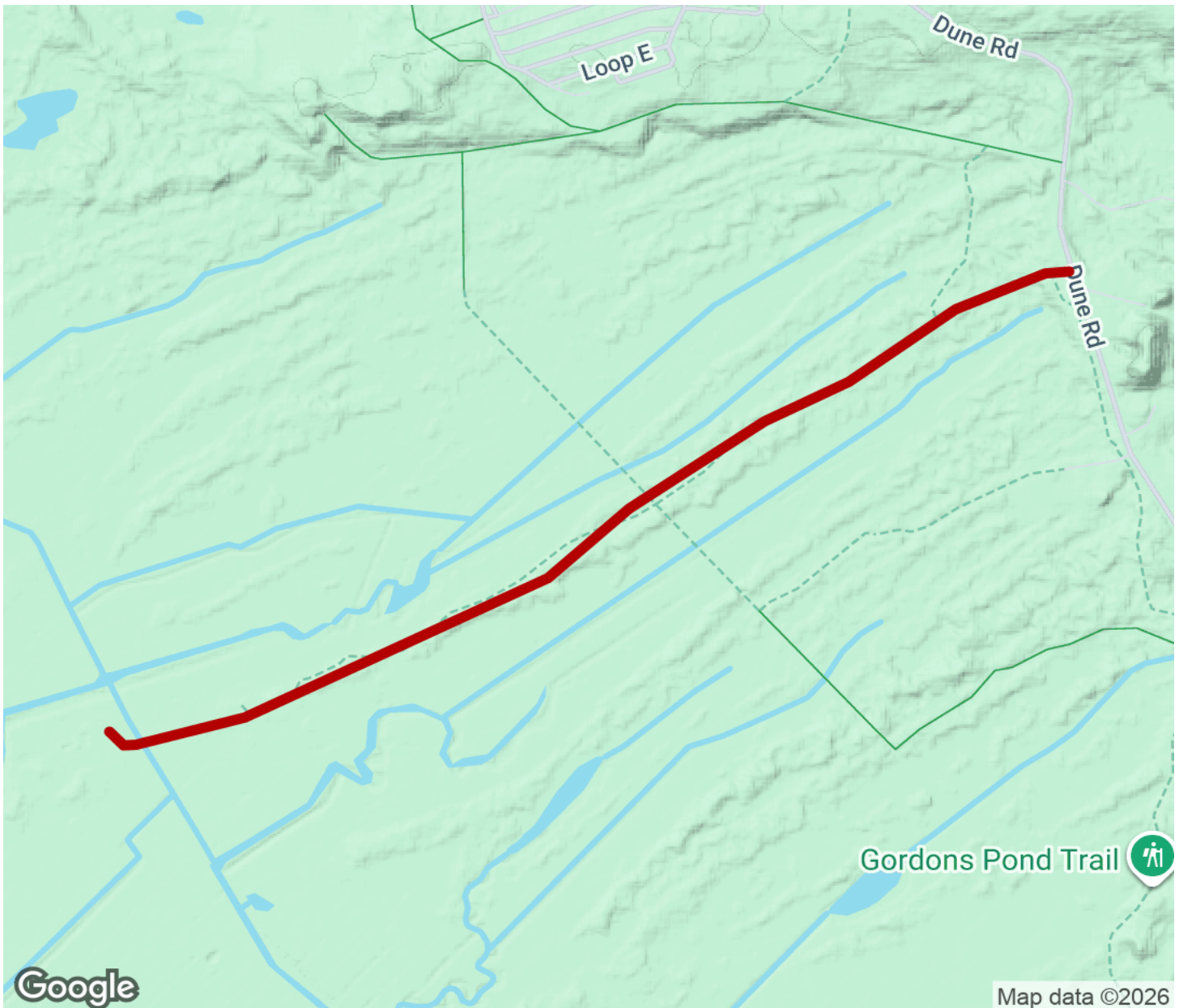
TrailLink
by Rails-to-Trails Conservancy

TrailLink.com



Salt Marsh Spur

Delaware



Trailhead



Restroom



Parking



Water Fountain



Tunnel



TrailLink
by Rails-to-Trails Conservancy

TrailLink.com