



2025

TrailLink Unlimited 

Guides



**Mills Run
Trail**
Texas



Mills Run Trail

Texas

Mills Run Trail provides a short, easy and well-shaded route with glimpses of the creek on one side and neighborhood views on the



Mills Run Trail provides a short, easy and well-shaded route with glimpses of the creek on one side and neighborhood views on the other. It skirts the Grapevine Golf Course and ends at the Grapevine Mills Mall, a sprawling shopping, restaurant and entertainment complex with more than 180 stores, a LegoLand Discovery Center and a two-story sea life aquarium with a walk-through underwater tunnel.



TrailLink
by Rails-to-Trails Conservancy

TrailLink.com



Mills Run Trail

Texas

States: Texas

Counties: Tarrant

Length: 1.1miles

Trail end points: Grapevine Mills Rd.,
Grapevine to International Pkwy., Grapevine

Trail surfaces: Concrete

Trail category: Greenway/Non-RT

Trail activities: Bike, Inline

Skating, Wheelchair Accessible, Walking

Parking & Trail Access

Plentiful parking can be found at the Grapevine Mills Mall (3000 Grapevine Mills Parkway) at trail's southern tip.



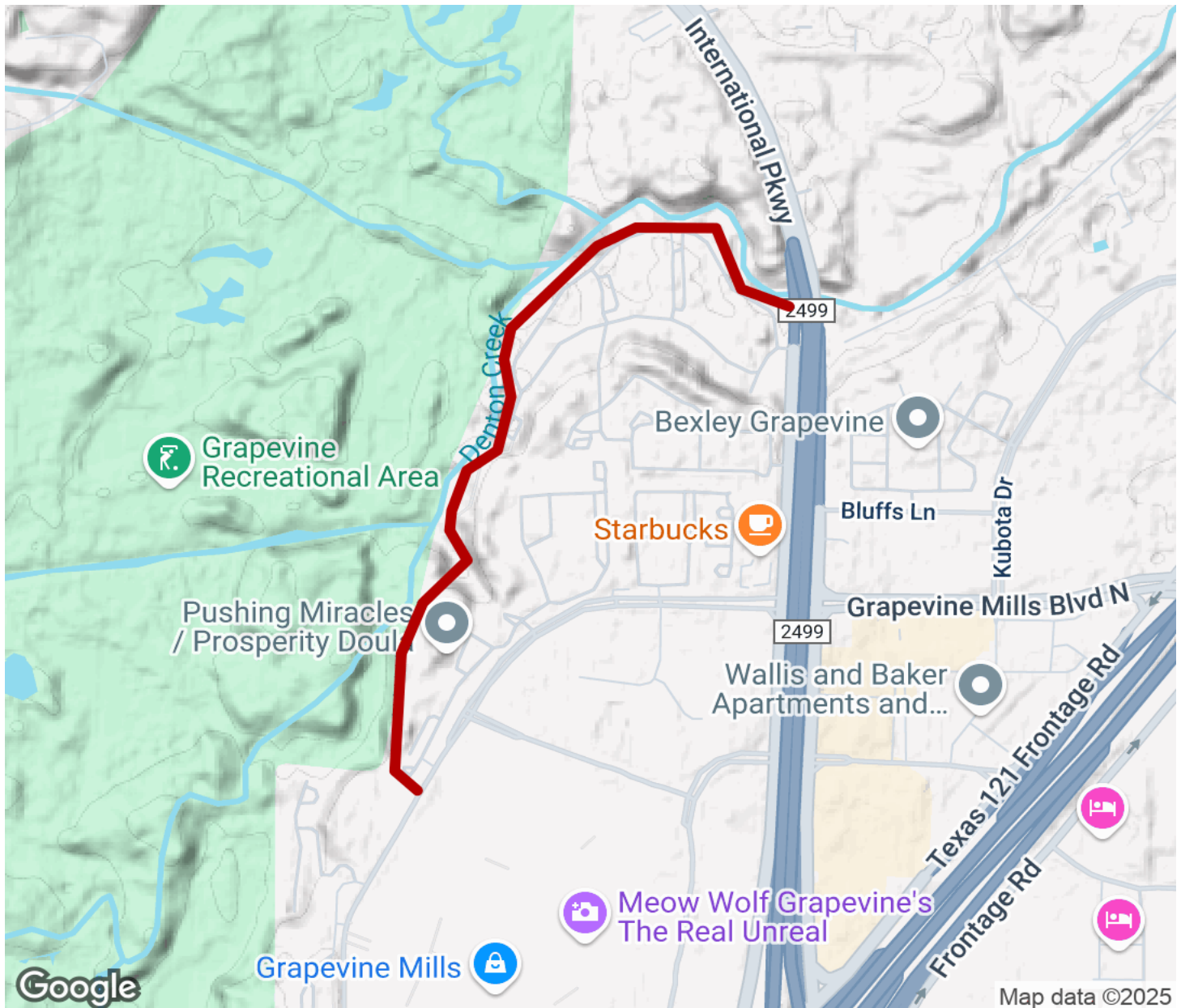
TrailLink
by Rails-to-Trails Conservancy

TrailLink.com







Mills Run Trail

Texas



Map data ©2025

-  Trailhead
-  Restroom
-  Parking
-  Water Fountain
-  Tunnel