



2025

TrailLink Unlimited 

Guides



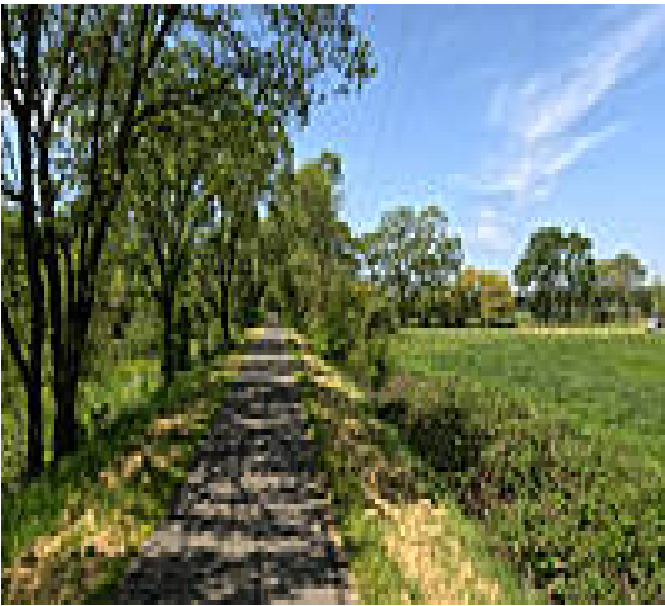
**Santa Rosa  
Creek Trail**  
*California*



## Santa Rosa Creek Trail

California

*The Santa Rosa Creek Trail follows the meandering course of Santa Rosa Creek, beginning in downtown Santa Rosa and heading west*



surface beyond Willowside Road. The trail on the south side of the creek has a gravel surface exclusively.

At its eastern end at Pierson Street, the trail meets the [Prince Memorial Greenway](#), which continues seamlessly to downtown Santa Rosa and a junction with the [Joe Rodota Trail](#). Access to the latter is between Olive and 3rd Streets via a bicycle/pedestrian bridge alongside the train tracks.

The Santa Rosa Creek Trail follows the meandering course of Santa Rosa Creek, beginning in downtown Santa Rosa and heading west beyond Willowside Road. From end to end, the trail is only a few miles long, but you can more than double that by traveling on the spur trails and along both sides of the creek.

The trail follows a wooded corridor that is home to many bird species and other wildlife. It branches north just west of Fulton Road, forking again with both forks heading to Marlow Road. Back on the main route, the trail branches north again between two cultivated fields, crossing Guerneville Road and turning east to Fulton Road.

The Santa Rosa Creek Trail is paved on its north side between downtown and Willowside Road, but has a gravel



# Santa Rosa Creek Trail

California

**States:** California

**Counties:** Sonoma

Length: 15.7miles

**Trail end points:** Prince Memorial Greenway  
at Pierson St. to Willowside Rd.

**Trail surfaces:** Asphalt,Gravel

**Trail category:** Greenway/Non-RT

**Trail activities:** Bike,Inline

Skating,Wheelchair Accessible,Walking

## Parking & Trail Access

To access the Santa Rosa Creek Trail, take US 101 to the 3rd Street exit and head southwest. Turn right on Pierson Street. The trail can be found on either side of the creek near the road's end. Note that parking is unavailable here.



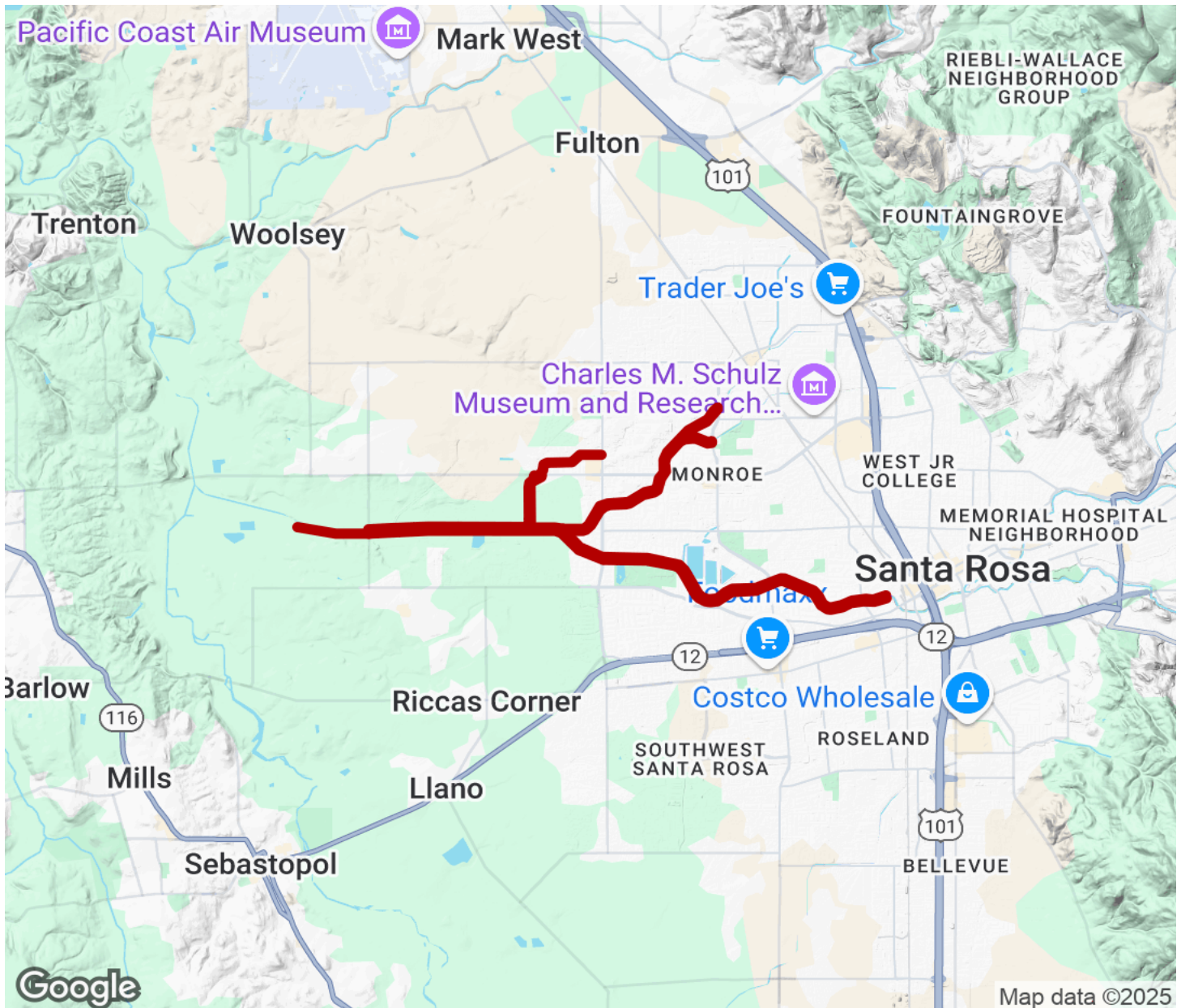
**TrailLink**  
by Rails-to-Trails Conservancy

**TrailLink.com**



# Santa Rosa Creek Trail

California



Trailhead



Restroom



Parking



Water Fountain



Tunnel



**TrailLink**  
by Rails-to-Trails Conservancy

**TrailLink.com**