



2026

TrailLink Unlimited 

Guides



**Crabtree
Creek
Greenway**
North Carolina



Crabtree Creek Greenway

North Carolina

Closure Notice: The Crabtree Creek Greenway is closed between N. Raleigh Blvd. and Crabtree Blvd (miles 5.25-6). Please check with



Closure Notice: The Crabtree Creek Greenway is closed between N. Raleigh Blvd. and Crabtree Blvd (miles 5.25-6). Please check with the government of Raleigh for more current updates and detour information.

The Crabtree Creek Greenway stretches just over 19.5 miles along the Crabtree Creek corridor through forested greenways, city parks, residential areas, and some business areas. There are multiple sections of the trail in Morrisville, Cary, and Raleigh.

Morrisville (1.4 miles)

The trail follows Crabtree Creek west for about 1.4 miles from Evans Road through Cedar Fork District Park to Crabtree Crossing Parkway. Before crossing the creek

at its west endpoint, the trail connects to the Hatcher Creek Greenway. The trail's eastern end on Evans Road has a seamless connection to Cary's section of the Crabtree Creek Greenway, which offers access to Lake Crabtree and Umstead State Park (8801 Glenwood Ave, Raleigh). There are restrooms at Cedar Fork District Park (228 Aviation Pkwy, Morrisville).

Cary (2 miles)

There are two segments of the trail in the Town of Cary. The longer segment (1.7 miles) continues east from the Morrisville section at Evans Road and runs along the southern shore of Lake Evans. Crossing the lake via a 730-foot concrete boardwalk, the trail ends by connecting with the Black Creek Greenway. The paved trail is 10 feet wide and has a maximum slope of 5% with the majority of the route being quite level. Dogs are welcome as long as they remain on a leash.

There is a 0.3-mile section, the Bond Park Segment, which splits from the White Oak Creek Greenway to head north along a tributary of the Crabtree Creek in Fred G. Bond Metro Park (801 High House Rd, Cary). The park includes Bond Lake, a variety of sports fields and courts, a community center, restrooms, parking, and the Bond Park Lake Trail.

Additional restrooms are available at the Old Reedy Creek Road trailhead (2139 Old Reedy Creek Rd, Cary) and North Cary Park (1100 Norwell Blvd).

Raleigh (15.9 miles)

The trail passes through stands of loblolly pine, elm, ash, buckeye, river birch, and poplar with an understory of box elder, hornbeam holly, and dogwood. Trail users also experience lovely views of Crabtree Creek, with large rock outcroppings here and there, as well as steep slopes. At Lassiter Mill Park (3362 Lassiter Falls Cir, Raleigh) you can see the former site of Lassiter Mill Dam and the former site of a grist mill built in 1764. The mill last operated from 1908 to



TrailLink
by Rails-to-Trails Conservancy

TrailLink.com



Crabtree Creek Greenway

North Carolina

States: North Carolina

Counties: Wake

Length: 19.5miles

Trail end points: Anderson Point Park (20 Anderson Point Dr, Raleigh) to Hatcher Creek Greenway & Crabtree Crossing Pkwy (Morrisville)

Trail surfaces: Asphalt

Trail category: Greenway/Non-RT

Trail activities: Bike,Inline Skating,Walking,Wheelchair Accessible

Parking & Trail Access

The Crabtree Creek Greenway runs between White Oak Creek Greenway (Cary) and Anderson Point Park, 20 Anderson Point Dr. (Raleigh), where parking is available.

Parking is also available at:

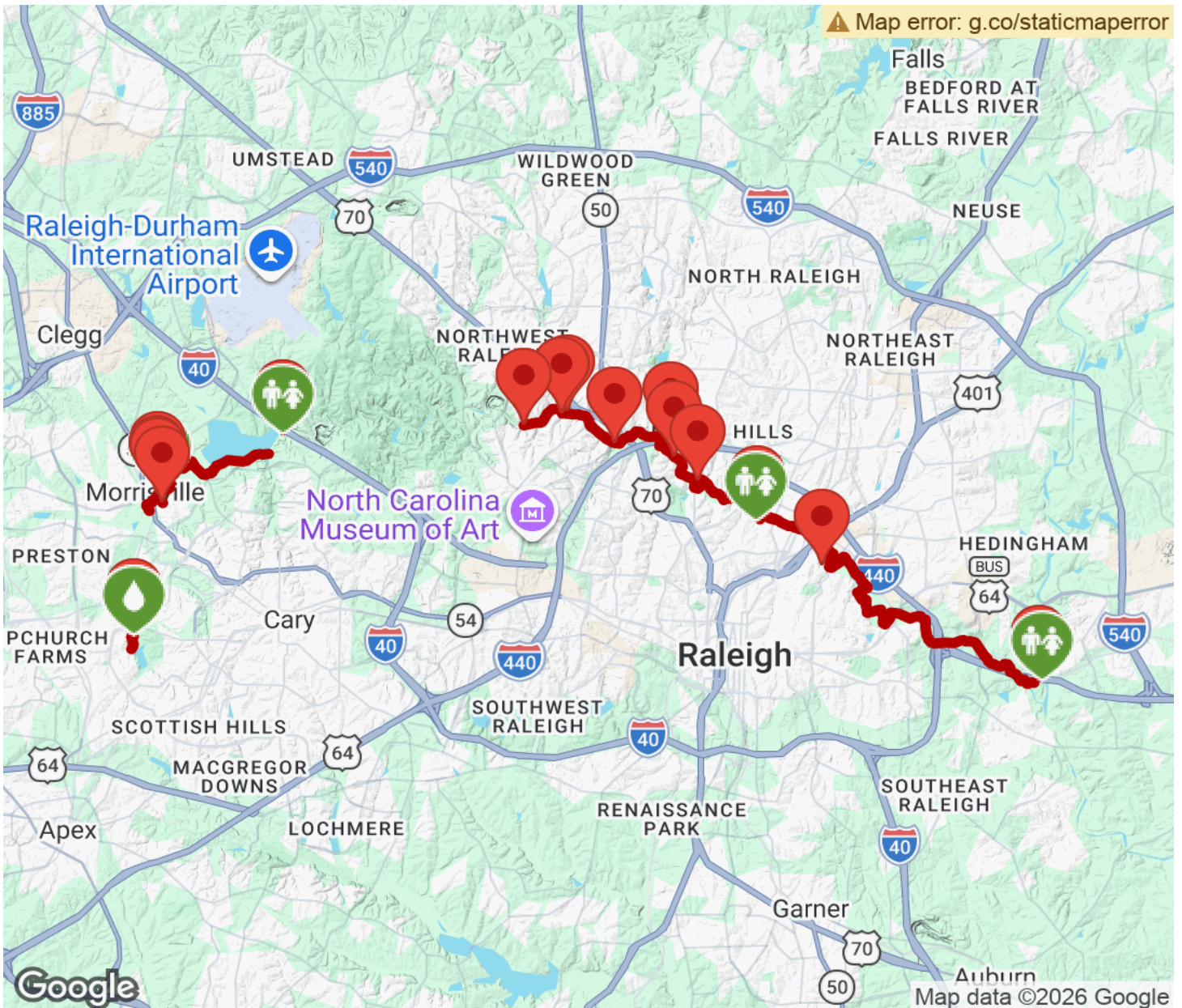
- Cedar Fork District Park, 228 Aviation Pkwy (Morrisville)
- North Hills Park, 100 Chowan Cir. (Raleigh)
- 2321 Crabtree Blvd. (Raleigh)

Please see [TrailLink Map](#) for all parking options and detailed directions.



Crabtree Creek Greenway

North Carolina



Trailhead



Restroom



Parking



Water Fountain



Tunnel



TrailLink
by Rails-to-Trails Conservancy

TrailLink.com