



2026

TrailLink Unlimited 

Guides



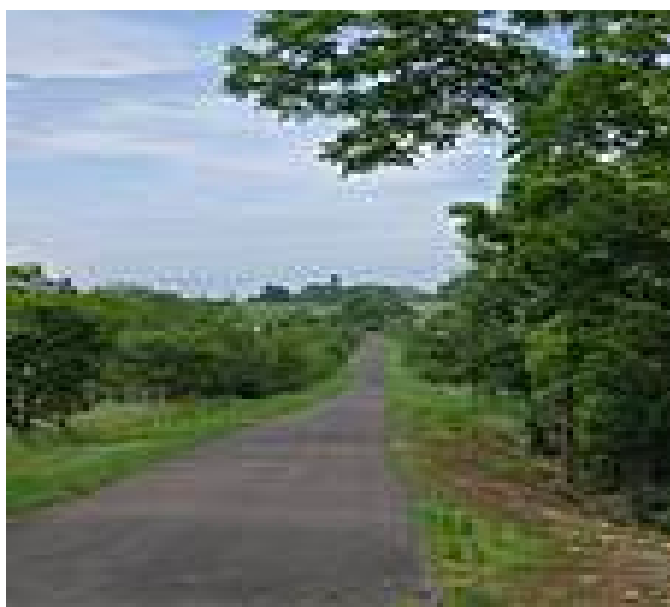
**WV Route 9  
Bike Path**  
*West Virginia*



## WV Route 9 Bike Path

West Virginia

*The WV Route 9 Bike Path follows the busy thoroughfare from Martinsburg to the Charles Town/Ranson area. About the Route*



The WV Route 9 Bike Path follows the busy thoroughfare from Martinsburg to the Charles Town/Ranson area.

### About the Route

Note that the path runs through open space with little to no shade. While the southern portion of the trail is fairly flat, the northern half is somewhat hilly. Stops along the way highlight points of interest.



**TrailLink**  
by Rails-to-Trails Conservancy

**TrailLink.com**



## WV Route 9 Bike Path

*West Virginia*

**States:** West Virginia

**Counties:** Berkeley, Jefferson

Length: 10miles

**Trail end points:** Currie Rd. (Ranson) to WV-0  
(Martinsburg)

**Trail surfaces:** Asphalt

**Trail category:** Greenway/Non-RT

**Trail activities:** Bike, Inline

Skating, Walking, Wheelchair Accessible

## Parking & Trail Access

Parking is available by the Eastern Regional Jail on Grapevine Road near the trail's northern tip in Martinsburg and at the Currie Road exit in Ranson at the trail's southern end.



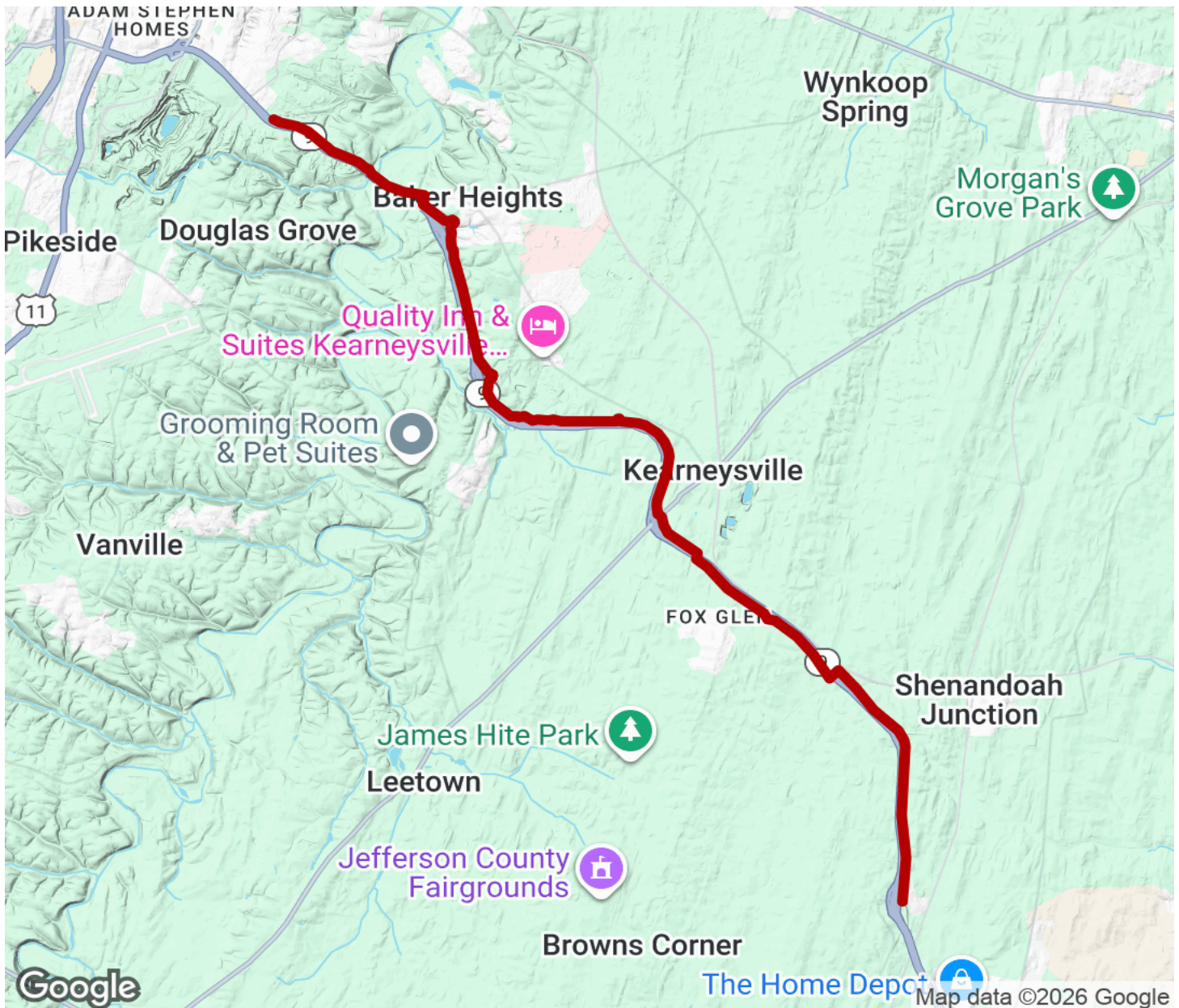
**TrailLink**  
by Rails-to-Trails Conservancy

**TrailLink.com**



## WV Route 9 Bike Path

West Virginia



Trailhead



Restroom



Parking



Water Fountain



Tunnel



**TrailLink**  
by Rails-to-Trails Conservancy

**TrailLink.com**