



2026

TrailLink Unlimited



Guides



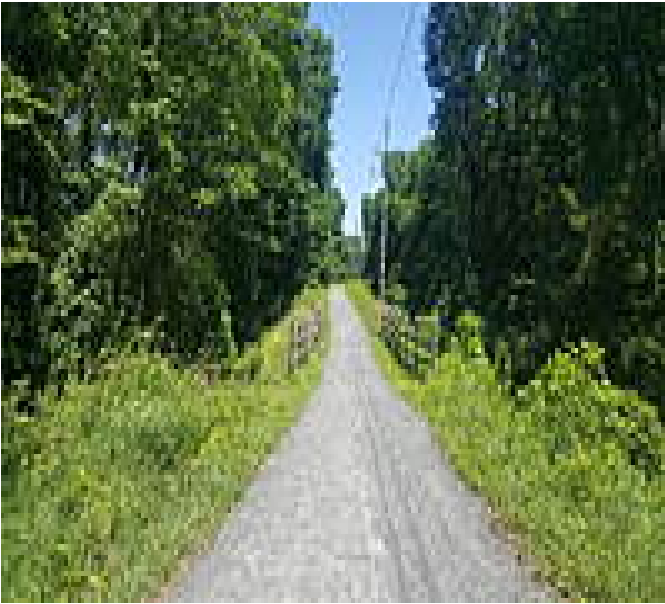
**Union  
Transportation  
Trail**  
*New Jersey*



# Union Transportation Trail

New Jersey

*The Union Transportation Trail operates as an easement granted by the utility company, and the power line runs along the length of*



The Union Transportation Trail operates as an easement granted by the utility company, and the power line runs along the length of the trail. Users heading out on a hot summer day should take precautions; a hat and extra water are recommended because the trees have been trimmed back due to the power line, and there is no shade along the trail.

## About the Route

Starting from the southern terminus at the Millstream Road trailhead, the trail crosses Millstream Road itself before continuing through wooded areas, and it isn't long before the first farmland scene appears. About 0.8 mile into the trail, there is a small horse farm on the right, and perhaps even a horse or two grazing beyond the fence that

abuts the path. Nearly another 0.4 mile farther, the trail crosses Forked River Road. Trail users can activate flashing beacons to warn oncoming drivers, but take care when crossing this higher-speed road. The path continues, flanked by trees on either side that obscure the farm fields that lie beyond them. Another 0.9 mile farther, after crossing Jonathan Holmes Road, a trailhead lies to your right. Not long after, a spur trail on the left leads to the parking lot of the Upper Freehold municipal building.

Heading north, the trail passes more fields and a tree farm and crosses Burlington Path Road before passing by a small suburban development on the right, beginning about 3.5 miles from the start of the trail. The trail crosses Davis Station Road before turning sharply to the left to parallel it. The path turns right again and, in this section, parallels busy Forked River Road. Vast farmland flanks the trail's right, while a small shopping center and green fields appear on the left. In this section, the trail goes up and down several gentle hills, which may result in some huffing and puffing for inexperienced or infrequent trail users.

At 4.7 miles from the start, the route turns back to the right and enters a short, wooded area—the only portion of the trail offering significant shade. Even in this small space, wildlife thrives. Frogs sing to each other from a muddy pond beside the trees. Immediately after this quiet respite, the trail passes over a bridge, and the sky opens up again as the trail heads up a short but steep hill and heads back to the familiar, flat railroad grade of the trail.

From here on, trail users will encounter eight more bridges as the trail crosses many small streams. About 5 miles into the trail, the trees on either side make the space feel wooded, but farmland is never far away—farm vehicles and equipment can be seen peeking through the trees. Another 0.9 mile ahead, the path crosses a creek via a small bridge before going through an underpass, with I-195 overhead. The underpass itself contains clues to the wildlife and people that frequent



# Union Transportation Trail

*New Jersey*

**States:** New Jersey

**Counties:** Monmouth

Length: 9.3miles

**Trail end points:** Old York Rd. (East Windsor)  
to 8 Millstream Road at Monmouth Road  
(Cream Ridge)

**Trail surfaces:** Crushed Stone

**Trail category:** Rail-Trail

**Trail activities:** Bike,Horseback  
Riding,Walking,Cross Country Skiing

## Parking & Trail Access

The Union Transportation Trail runs between Old York Rd. (East Windsor) and Crosswicks Cream Park (Cream Ridge), where parking is available.

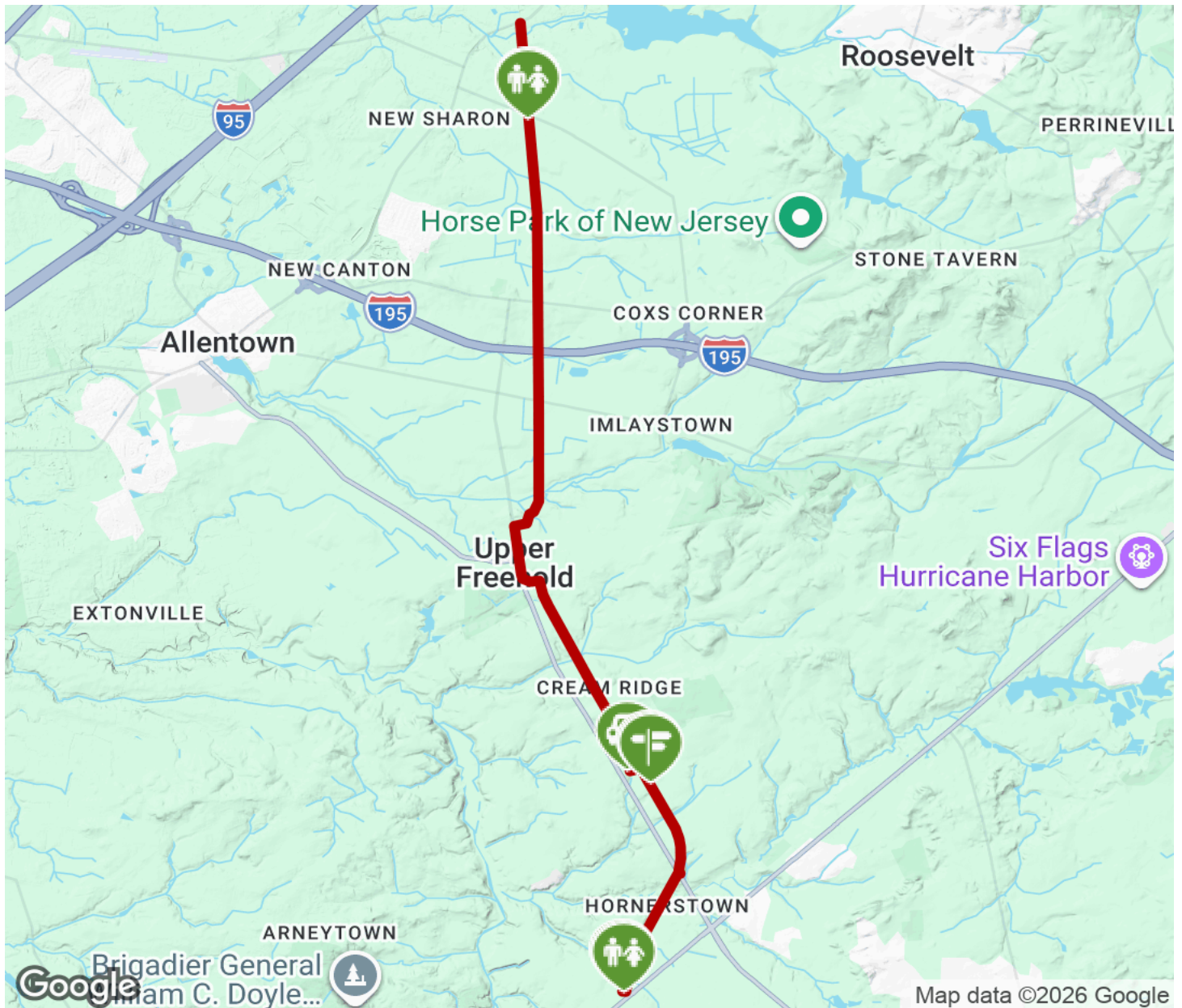
Parking is also available along Johnathan Holmes Road.

Please see [TrailLink Map](#) for all parking options and detailed directions.



# Union Transportation Trail

New Jersey



Trailhead



Restroom



Parking



Water Fountain



Tunnel



**TrailLink**  
by Rails-to-Trails Conservancy

**TrailLink.com**