



2024

TrailLink Unlimited 

Guides



**Truman Park/
St. Stanislaus
Trail -
Missouri
River
Greenway**
Missouri



Truman Park/St. Stanislaus Trail - Missouri River Greenway

Missouri

This short, but beautiful trail, takes travelers from Truman Park's lake north to Aubuchon Creek through a lush wooded area. The



This short, but beautiful trail, takes travelers from Truman Park's lake north to Aubuchon Creek through a lush wooded area. The park offers places to fish, play sports and picnic.

Future plans include continuing the trail's northward course to the St. Stanislaus Conservation Area on the Missouri River.



Truman Park/St. Stanislaus Trail - Missouri River Greenway

Missouri

States: Missouri

Counties: St. Louis

Length: 0.6miles

Trail end points: Truman Park to Aubuchon
Creek

Trail surfaces: Asphalt

Trail category: Greenway/Non-RT

Trail activities: Bike, Inline
Skating, Wheelchair Accessible, Walking

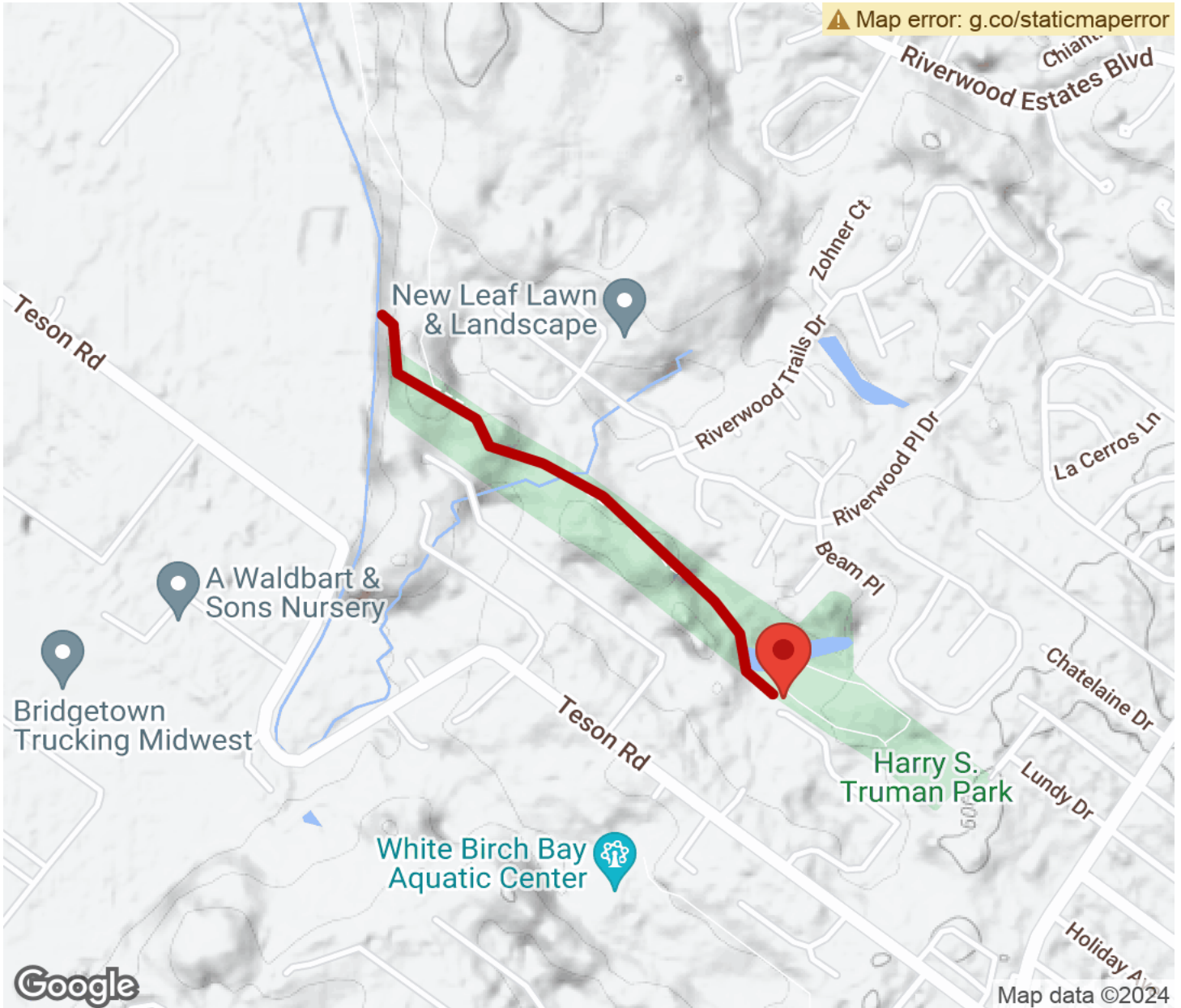
Parking & Trail Access

A parking lot is available at the southern end of the trail in Truman Park (7029 Howdershell Road, Hazelwood).



Truman Park/St. Stanislaus Trail - Missouri River Greenway

Missouri



Trailhead



Restroom



Parking



Water Fountain



Tunnel



TrailLink
by Rails-to-Trails Conservancy

TrailLink.com