



2026

TrailLink Unlimited 

Guides



Longleaf Trail *North Carolina*



Longleaf Trail

North Carolina

Nestled in the northern outskirts of the charming town of Southern Pines, the Longleaf Trail provides a useful connection between the



Nestled in the northern outskirts of the charming town of Southern Pines, the Longleaf Trail provides a useful connection between the Pine Grove Village, Talamore and Longleaf neighborhoods. Running between the [Forest Creek Trail](#) and the [Longleaf Access Trail](#), this half-mile pathway is part of a network of trails surrounding Reservoir Park, a scenic tree-lined lake.



TrailLink
by Rails-to-Trails Conservancy

TrailLink.com



Longleaf Trail

North Carolina

States: North Carolina

Counties: Moore

Length: 0.5miles

Trail end points: Forest Creek Trail, Southern
Pines to Longleaf Access Trail

Trail surfaces: Dirt

Trail category: Greenway/Non-RT

Trail activities: Bike, Walking, Wheelchair
Accessible

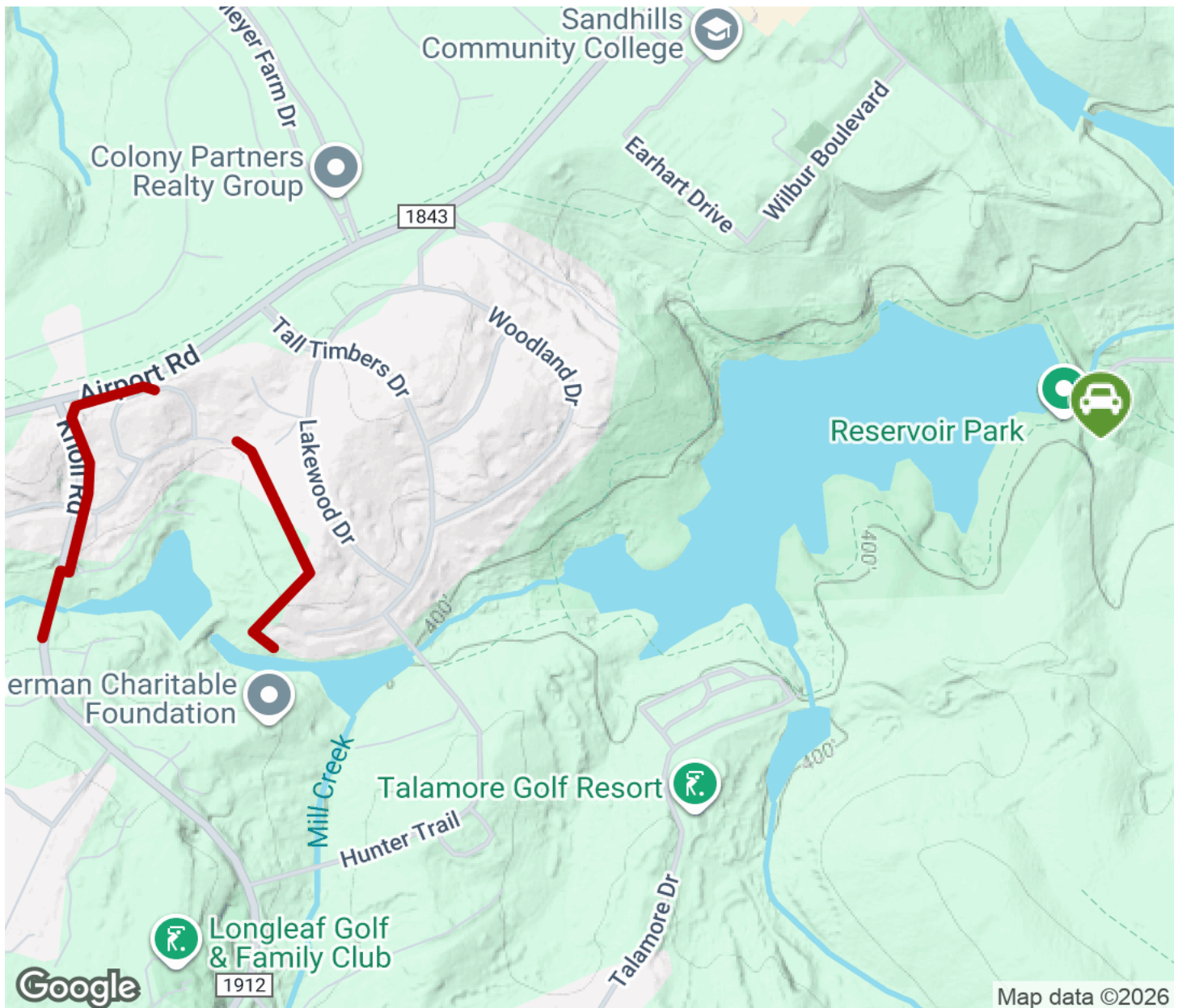
Parking & Trail Access

Parking is available in nearby Reservoir Park (300 Reservoir Park Road).



Longleaf Trail

North Carolina



Trailhead



Restroom



Parking



Water Fountain



Tunnel



TrailLink
by Rails-to-Trails Conservancy

TrailLink.com