



2025

TrailLink Unlimited 

Guides



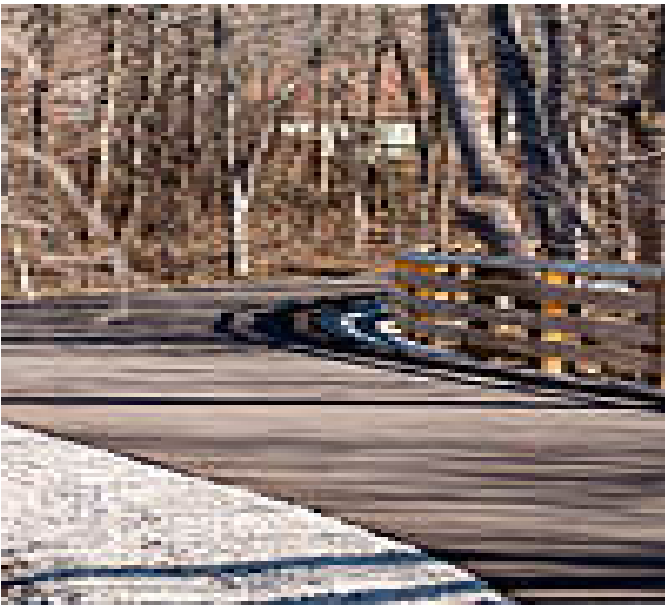
**Midland
Trace Trail**
Indiana



Midland Trace Trail

Indiana

The Midland Trace Trail follows the abandoned Central Indiana Railway corridor (a.k.a. the "Midland") for 7.5 miles in three



The Midland Trace Trail follows the abandoned Central Indiana Railway corridor (a.k.a. the "Midland") for 7.5 miles in three sections.

About the Route

The longest section of the Midland Trace Trail currently runs between Westfield Boulevard in Westfield and Westfield Road/SR32 in Noblesville. Plans include continuing the trail east to SR37.

In Westfield, two additional sections run from Retford Drive to Austrian Pine Way and from Quaker Park (17501 Dartown Rd) to a seamless connection with the [Monon Trail](#) just west of Westfield Park Road. In Noblesville, the trail connects to the Little Chicago Trail, which heads

north.

The paved, 12-foot-wide trail has signage along the route and crosswalks (some with signal lights) at street crossings. Restrooms, water, and other amenities are located along the trail and at the trailheads. View the [TrailLink map](#) for locations of restrooms and water stations.

When complete, the trail will run from Westfield to the White River in Noblesville, paralleling State Route 32, located roughly 0.25 mile to the corridor's north. The trail will pass through scenic woodlands and open fields, cross two historic railroad trestles and link neighborhoods, schools and parks in Noblesville and Westfield.

Connections

In Westfield, the trail seamlessly connects to the [Monon Trail](#) just west of Westfield Park Road.

The Midland Trace Trail is part of the Hamilton County Hubway trail network.



Midland Trace Trail

Indiana

States: Indiana

Counties: Hamilton

Length: 7.5miles

Trail end points: Retford Dr & Tilbury Way to Austrian Pine Way; Quaker Park (17501

Dartown Rd) to Monon Trail; to Westfield Blvd (Westfield) to Westfield Rd/SR32 (Noblesville)

Trail surfaces: Asphalt

Trail category: Rail-Trail

Trail activities: Bike, Inline

Skating, Walking, Wheelchair Accessible

Parking & Trail Access

The Midland Trace Trail runs between the intersection of Retford Dr & Tilbury Way and Westfield Rd/SR32 (Noblesville) with a few gaps.

Parking is available at:

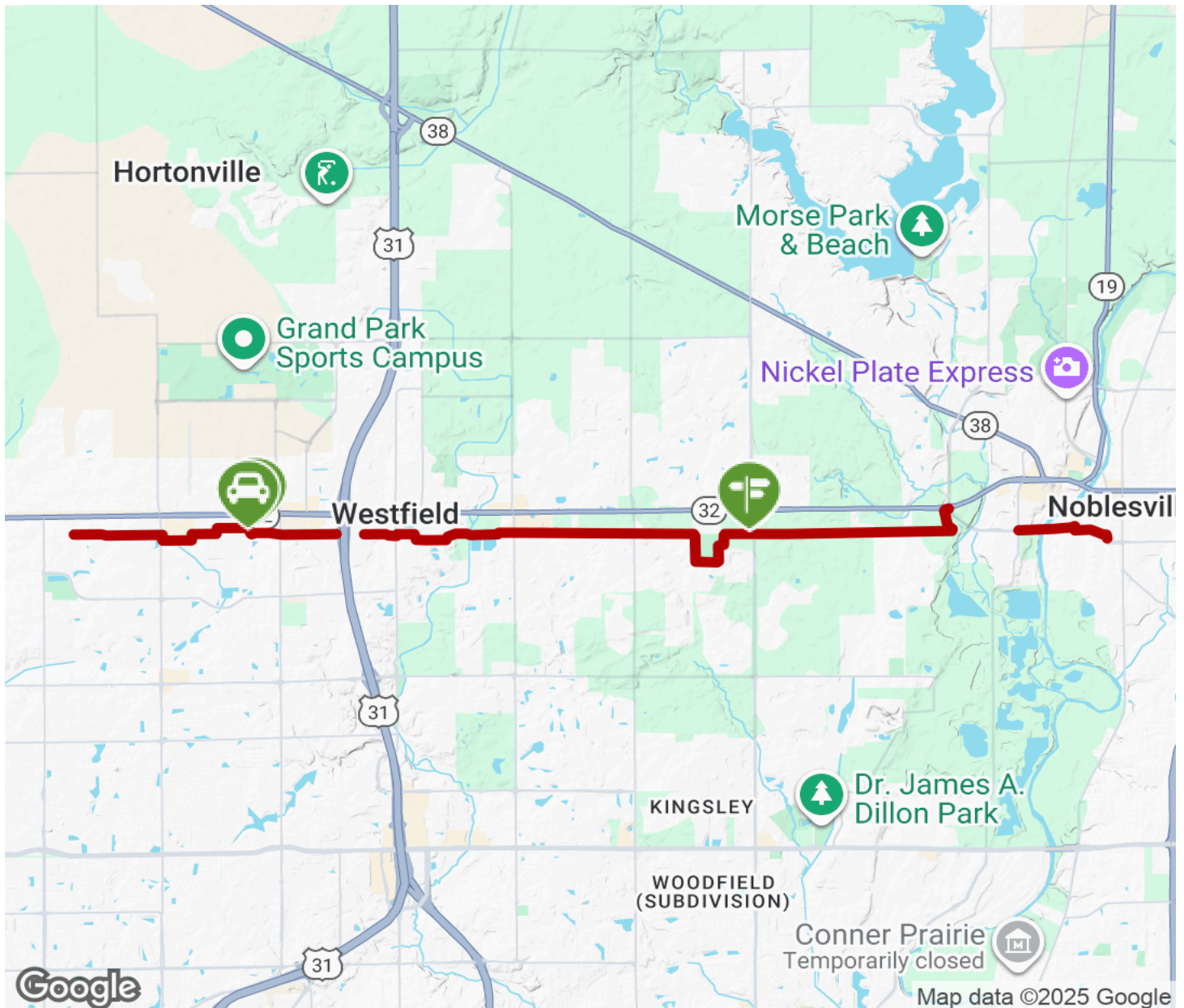
- Quaker Park, 17501 Dartown Rd (Westfield)
- Hazel Dell Rd (Noblesville)

These are not all official addresses, please view the [TrailLink map](#) for more detailed directions.



Midland Trace Trail

Indiana



Trailhead



Restroom



Parking



Water Fountain



Tunnel



TrailLink
by Rails-to-Trails Conservancy

TrailLink.com