



2025

TrailLink Unlimited 

Guides   



**Stone  
Mountain  
Trail**  
*Georgia*



## Stone Mountain Trail

Georgia

*To most Atlanta residents, the Stone Mountain Trail is a short greenway through Freedom Park and Candler Park. In reality, the*



Freedom Park; look for lots of company here. This stretch is also appropriately known as the Freedom Park Trail.

When the trail crosses through Candler Park, the Stone Mountain Trail begins its on-street stretch, an approximately 1-mile ride to the next segment of trail along the active MARTA rail line in Decatur.

Another on-road route from the Stone Mountain Trail's eastern end leads through greater Clarkston's industrial lots to a great view of Stone Mountain. In Stone Mountain Park, take the 4.5-mile loop trail around the mountain for a look at the local flora and fauna and lake views.

### Connections

Just before reaching the Carter Center, the trail intersects with the [Eastside Trail](#).

To most Atlanta residents, the Stone Mountain Trail is a short greenway through Freedom Park and Candler Park. In reality, the Stone Mountain Trail is much more: a continuous 25-mile stretch of pristine off-road trail and connecting on-street bike lanes that can carry trail users from Midtown Atlanta to Stone Mountain Park.

### About the Route

Starting off at the trail's western endpoint in Midtown Atlanta, trail users will be surrounded by skyscrapers, the Martin Luther King Jr. National Historic Site, the Carter Center, and more.

The western end of the trail is also near Georgia Tech's Midtown campus. From there, the trail heads east to



# Stone Mountain Trail

## Georgia

**States:** Georgia

**Counties:** De Kalb, Fulton

**Length:** 25.23 miles

**Trail end points:** Centennial Olympic Park (Atlanta) to Stone Mountain Park, 1000 Robert E Lee Blvd (Stone Mountain)

**Trail surfaces:** Asphalt, Concrete

**Trail category:** Rail-Trail

**Trail activities:** Bike, Inline Skating, Walking, Wheelchair Accessible

## Parking & Trail Access

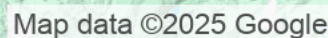
The Stone Mountain Trail runs between Centennial Olympic Park (Atlanta) and Stone Mountain Park, 1000 Robert E Lee Blvd (Stone Mountain), which offers parking.

Parking is also available at:

- The Carter Center, 441 John Lewis Freedom Pkwy NE (Atlanta)
- East Lake Station, 2260 College Ave NE (Atlanta)
- 885 Main St (Stone Mountain)

The Stone Mountain Trail has numerous access points with places to park. Visit the PATH Foundation's [official website](#) for maps.





**TrailLink.com**