



2025

TrailLink Unlimited 

Guides



## Jonathan Eshenour Memorial Trail

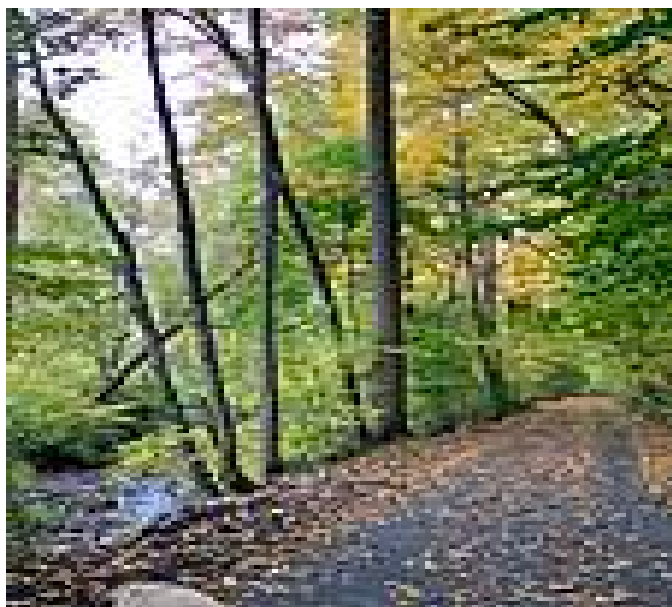
*Pennsylvania*



## Jonathan Eshenour Memorial Trail

Pennsylvania

*The Jonathan Eshenour Memorial Trail, named for a local resident who died in a bicycling accident, offers a safe paved route through*



At Bullfrog Valley Park, an extension branches south from the main trail through a wooded area following a long-abandoned railroad grade to Waltonville. It's here that the trail passes Shank Park, one of the town's most popular parks and the site of many community events and athletic tournaments.

Further east, in Hershey, another southern extension roughly parallels Route 743 (also known, aptly enough, as Cocoa Road) for about a mile.

The Jonathan Eshenour Memorial Trail, named for a local resident who died in a bicycling accident, offers a safe paved route through Derry and nearby communities.

### About the Route

The trail leaves off in the south from a rural area just south of Hummelstown, near the Indian Echo Caverns, and travels east to Palmdale. Along the way, the trail offers access to several parks, neighborhoods, commercial establishments, and the Penn State Hershey Medical Center. Numerous amenities line the path, including benches, gazebos, small gardens, and interpretive signs for natural and historic attractions.



**TrailLink**  
by Rails-to-Trails Conservancy

**TrailLink.com**



# Jonathan Eshenour Memorial Trail

*Pennsylvania*

**States:** Pennsylvania

**Counties:** Dauphin

Length: 13miles

**Trail end points:** Middletown Rd.  
(Hummelstown) to S Lingle Ave. (Palmyra)

**Trail surfaces:** Asphalt

**Trail category:** Rail-Trail

**Trail activities:** Bike, Inline  
Skating, Wheelchair Accessible, Walking

## Parking & Trail Access

The Johnathan Eshenour Memorial Trail runs between Middletown Rd. (Hummelstown) and Lingle Ave. (Palmyra).

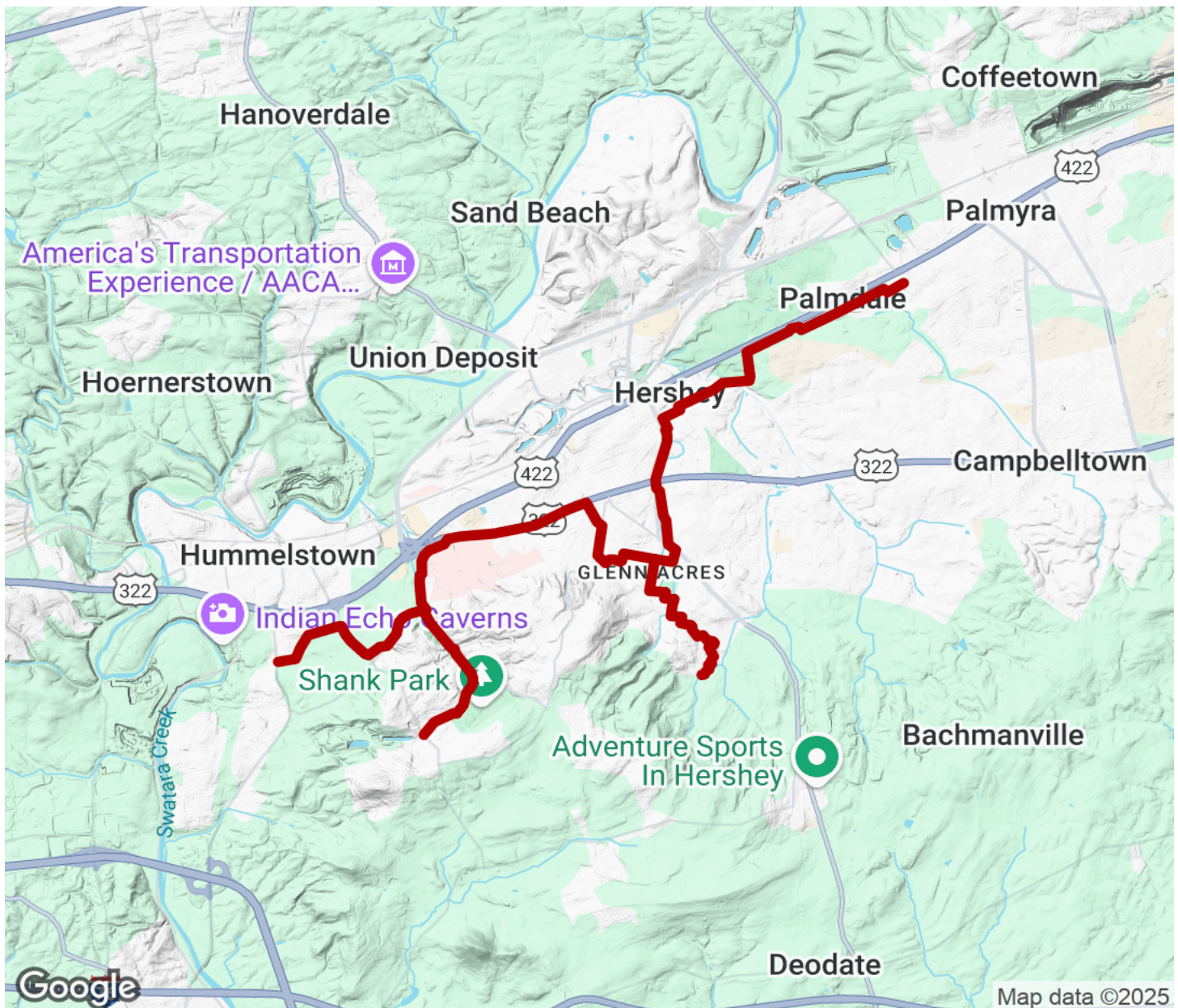
Please see [TrailLink Map](#) for detailed directions.





# Jonathan Eshenour Memorial Trail

Pennsylvania



Trailhead



Restroom



Parking



Water Fountain



Tunnel



**TrailLink**  
by Rails-to-Trails Conservancy

**TrailLink.com**