



2025

TrailLink Unlimited 

Guides



**Arnold City
Park Trail**
Missouri



Arnold City Park Trail

Missouri

The Arnold City Park Trail follows former residential streets through a wooded area along the Meramec River in a southwestern



The Arnold City Park Trail follows former residential streets through a wooded area along the Meramec River in a southwestern suburb of St. Louis. It forms a loop that begins and ends at the gravel road at the northeastern corner of Arnold City Park that connects Hollywood Beach Road and Bradley Beach Road. The pathway east of the gravel road (as shown in the trail map) is closed to vehicular traffic. The pathway west of the gravel road is shared with vehicles, although traffic is minimal.

The park offers a nice place to relax after your journey with a fishing lake, athletic fields, picnic pavilions and BBQ pits.



TrailLink
by Rails-to-Trails Conservancy

TrailLink.com



Arnold City Park Trail

Missouri

States: Missouri

Counties: Jefferson

Length: 2miles

Trail end points: Hollywood Beach Rd. to
Bradley Beach Rd.

Trail surfaces: Asphalt

Trail category: Greenway/Non-RT

Trail activities: Bike,Inline
Skating,Fishing,Walking

Parking & Trail Access

Parking is available in Arnold City Park (2101 Bradley Beach Road).



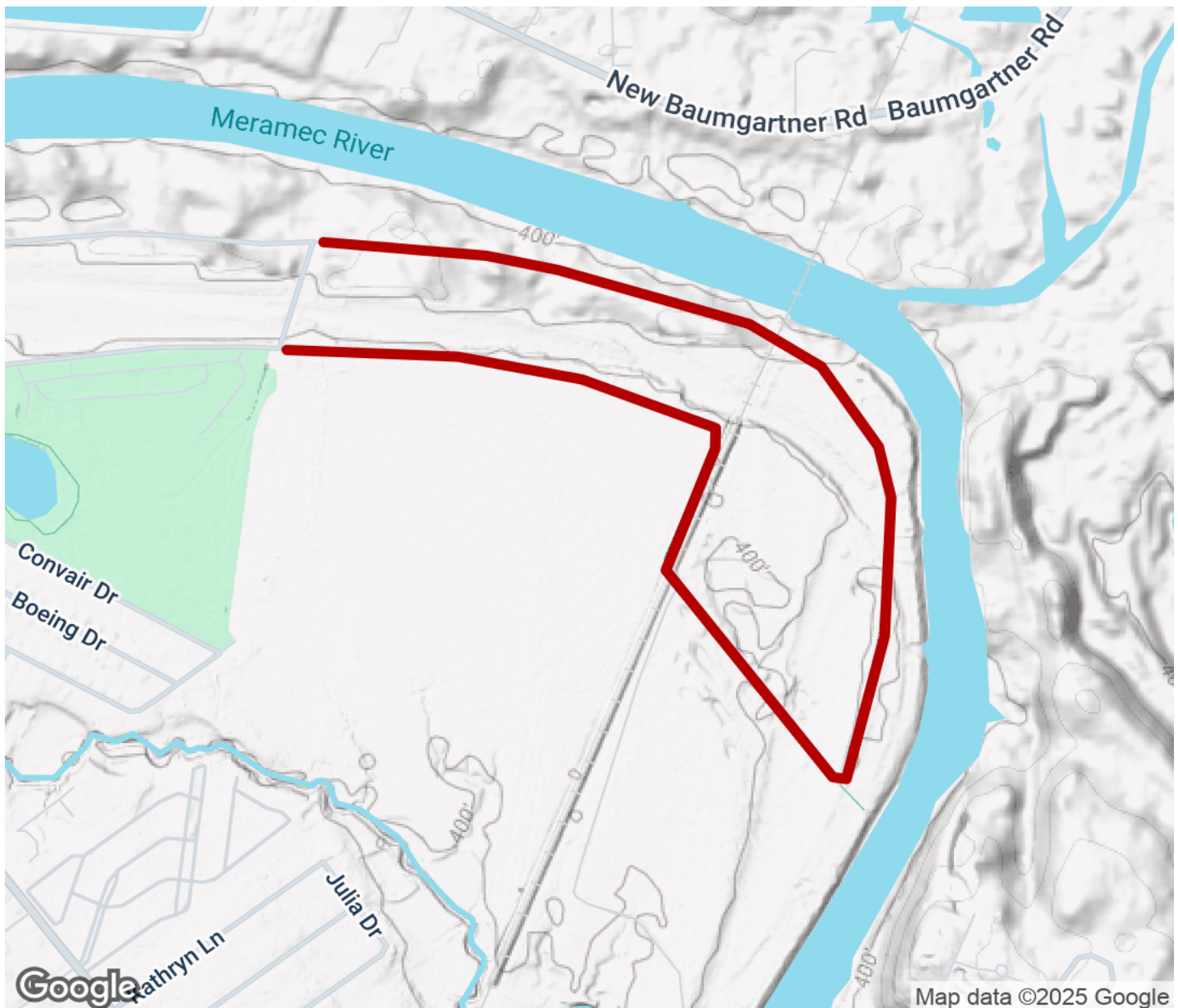
TrailLink
by Rails-to-Trails Conservancy

TrailLink.com



Arnold City Park Trail

Missouri



Trailhead



Restroom



Parking



Water Fountain



Tunnel



TrailLink
by Rails-to-Trails Conservancy

TrailLink.com