



2025

TrailLink Unlimited 

Guides



Kestrel Dune Trail

Oregon



Kestrel Dune Trail

Oregon

The Kestrel Dune Trail is one of several multi-use pathways in the park that houses historic Fort Stevens, built at the mouth of the



The Kestrel Dune Trail is one of several multi-use pathways in the park that houses historic Fort Stevens, built at the mouth of the Columbia River near the end of the Civil War. The trail begins on Peter Iredale Road, named for the 1906 shipwreck that is still visible on the beach. From there, the path leads north through spruce and hemlock forests, paralleling the ocean only about 200 yards away. After nearly 2 miles, the trail ends between Jetty Road and Parking Lot A at the base of a large sandy plain called the Clatsop Spit. From here, you can continue your journey east on the Trestle Bay Trail, which leads into swampland and another trail junction.



TrailLink
by Rails-to-Trails Conservancy

TrailLink.com



Kestrel Dune Trail

Oregon

States: Oregon

Counties: Clatsop

Length: 1.9miles

Trail end points: Peter Iredale Rd. to Parking
Lot A off Jetty Rd.

Trail surfaces: Asphalt

Trail category: Greenway/Non-RT

Trail activities: Bike, Walking

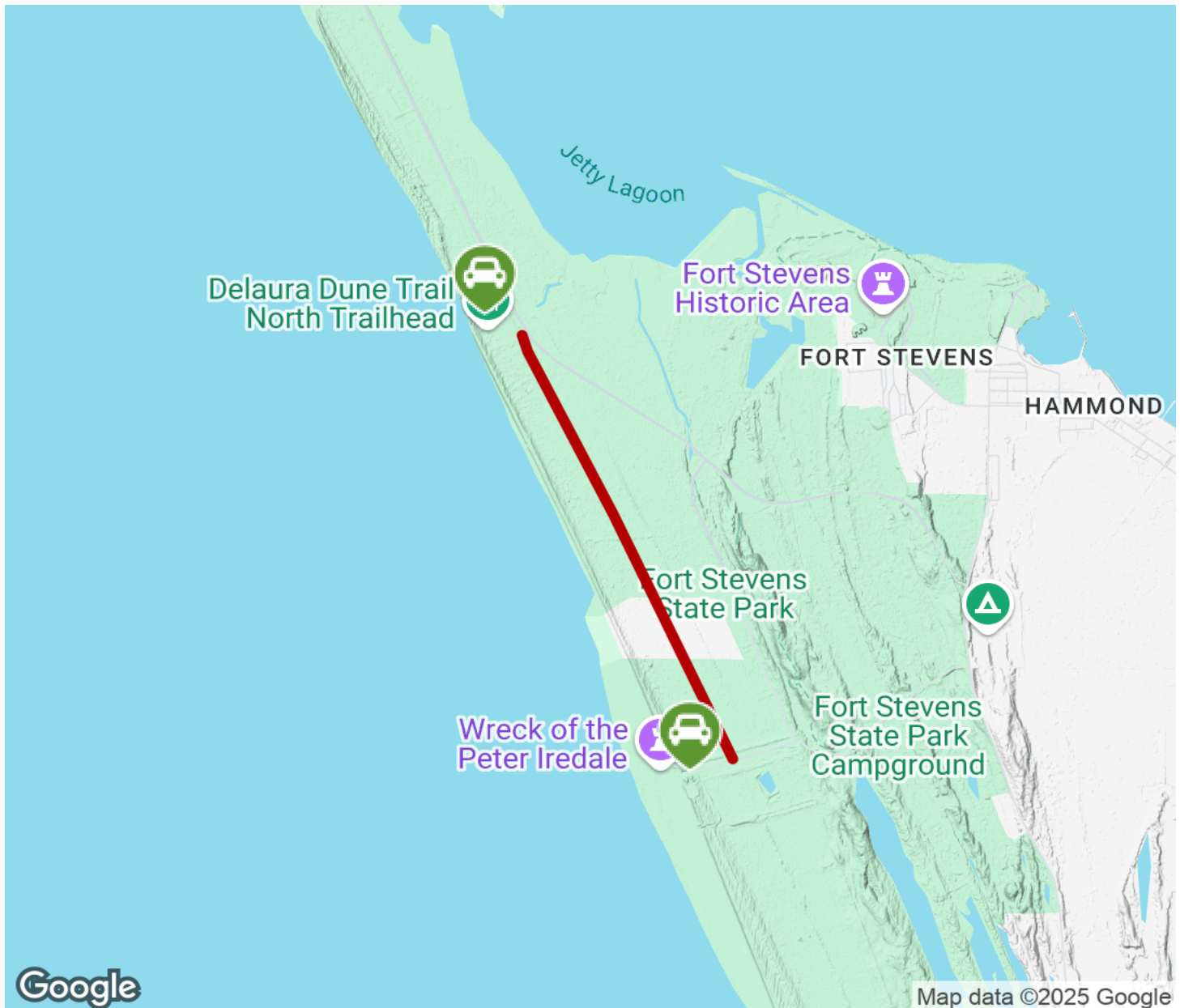
Parking & Trail Access

At the south end of the trail, a parking lot is available at the end of Peter Iredale Road. (There are also restrooms here.) At the north end of the trail, Parking Lot A is available off Jetty Road.



Kestrel Dune Trail

Oregon



Trailhead



Restroom



Parking



Water Fountain



Tunnel



TrailLink
by Rails-to-Trails Conservancy

TrailLink.com