



2026

TrailLink Unlimited 

Guides



**Aronson  
Avenue Trail**  
*Montana*



## Aronson Avenue Trail

Montana

*The Aronson Avenue Trail offers a paved half-mile route along the west side of its namesake roadway with views of open countryside.*



The Aronson Avenue Trail offers a paved half-mile route along the west side of its namesake roadway with views of open countryside. From its southern end, you can connect to the scenic [Swords Park Trail](#) and [Alkali Creek Trail](#).



**TrailLink**  
by Rails-to-Trails Conservancy

**TrailLink.com**



# Aronson Avenue Trail

*Montana*

**States:** Montana

**Counties:** Yellowstone

Length: 0.5miles

**Trail end points:** Camel Pl. and Aronson Ave. to  
Swords Park Trail at Alkali Creek Rd.

**Trail surfaces:** Asphalt, Concrete

**Trail category:** Greenway/Non-RT

**Trail activities:** Bike, Walking, Wheelchair  
Accessible

## Parking & Trail Access

A dirt parking lot is available north of Aronson Bridge.



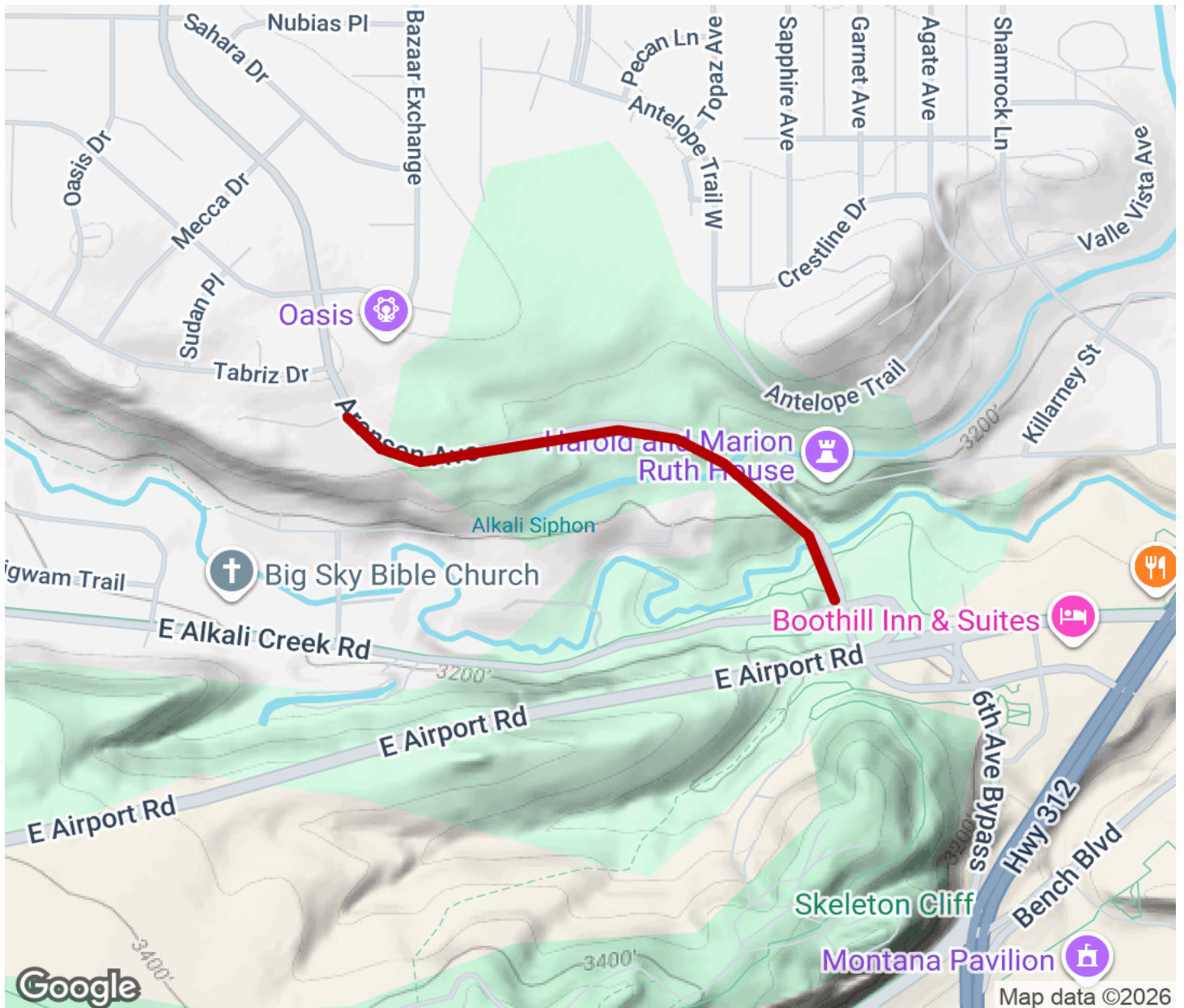
**TrailLink**  
by Rails-to-Trails Conservancy

**TrailLink.com**



# Aronson Avenue Trail

Montana



Trailhead



Restroom



Parking



Water Fountain



Tunnel



**TrailLink**  
by Rails-to-Trails Conservancy

**TrailLink.com**