



2025

TrailLink Unlimited 

Guides



**Montour Trail  
- Airport  
Connector**  
*Pennsylvania*



## Montour Trail - Airport Connector

Pennsylvania

*The Airport Connector is a spur off the impressive Montour Trail that circles the western outskirts of Pittsburgh. The paved pathway*



trail on Enlow Road, but it's a quiet street with little traffic. The trail ends at the Five Points intersection of Imperial-Enlow, where you can continue your journey on the Montour Trail on the south side of Main Street.

The Airport Connector is a spur off the impressive [Montour Trail](#) that circles the western outskirts of Pittsburgh. The paved pathway begins just off the extended-term parking lot on the western end of the Pittsburgh International Airport. Follow the signs and pavement markings through the lot to reach the trail.

Note that at the Interstate 376 (Airport Expressway) crossing, you'll be on Clinton Road sharing the roadway with traffic for about a mile. The route becomes designated trail again once you head southeast on McCaslin Road. You'll travel through mostly residential neighborhoods with a mixture of shaded areas and open vistas.

Another on-road section will come at the south end of the



# Montour Trail - Airport Connector

*Pennsylvania*

**States:** Pennsylvania

**Counties:** Allegheny

Length: 6.5miles

**Trail end points:** Enlow Rd. at Five Points to  
Airport Boulevard, Pittsburgh International  
Airport

**Trail surfaces:** Asphalt

**Trail category:** Greenway/Non-RT

**Trail activities:** Bike, Walking

## Parking & Trail Access

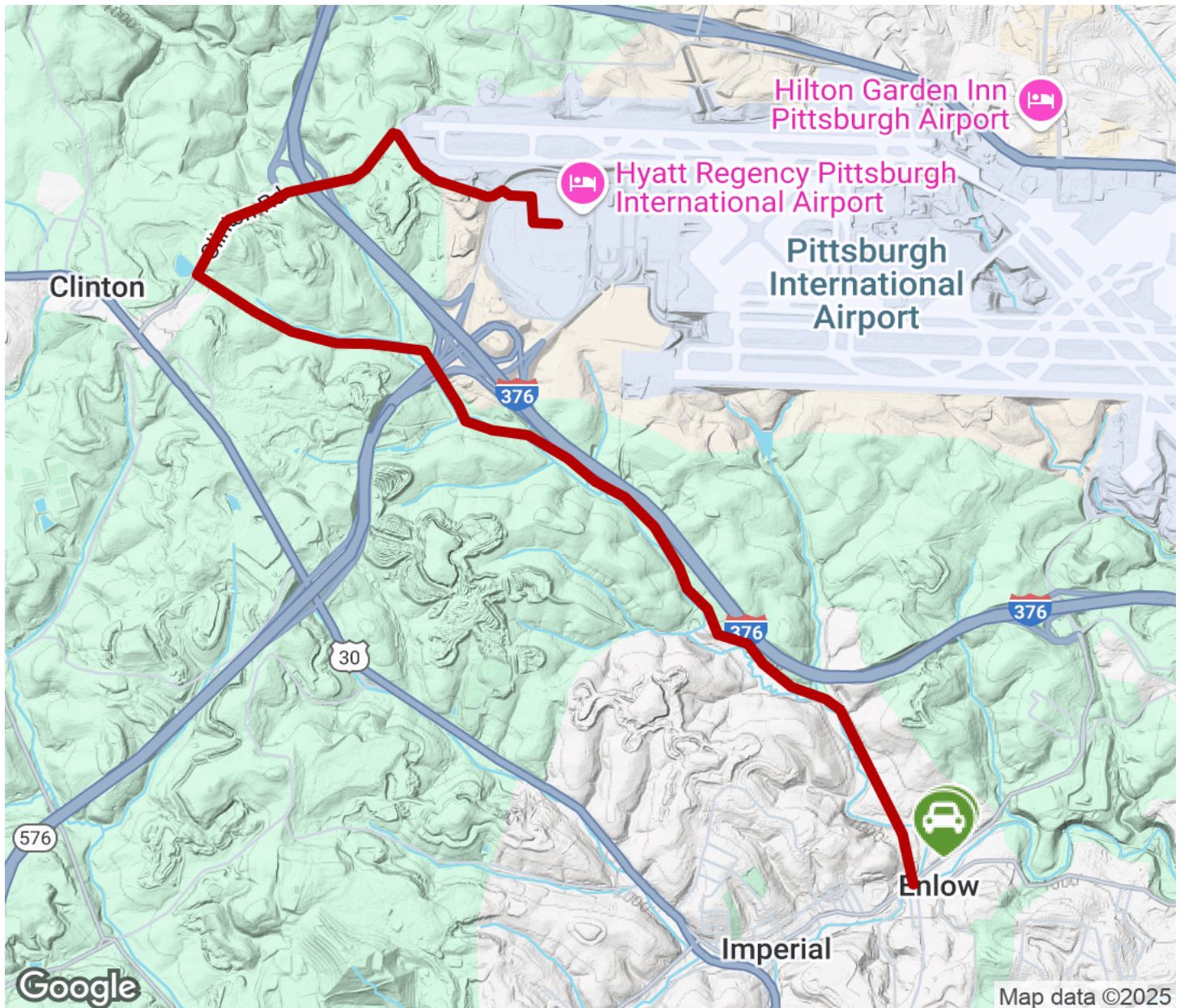
Paid parking is available at the Pittsburgh International  
Airport (1000 Airport Blvd.).





# Montour Trail - Airport Connector

Pennsylvania



Trailhead



Restroom



Parking



Water Fountain



Tunnel



**TrailLink**  
by Rails-to-Trails Conservancy

**TrailLink.com**