



2025

TrailLink Unlimited 

Guides   



**Centennial
Greenway**
Missouri



Centennial Greenway

Missouri

Centennial Greenway is open in five segments, totaling 14 miles. City Centre Park to Page Ave. This section, which largely parallels



connects Shaw Park in Clayton to Olive Boulevard.

Vernon Avenue to S. Skinker Boulevard: This segment provides an important connection between Washington University in St. Louis and Forest Park, which is known as the city's heart and features important cultural attractions such as the zoo, science center, and museums. Starting from Vernon Avenue just east of Leland Avenue, this section runs south to Delmar Boulevard in the Loop Business District. It continues along Melville Avenue to the Washington University campus, then runs east along Forsyth Boulevard to Forest Park at Skinker Boulevard.

Centennial Greenway is open in five segments, totaling 14 miles.

City Centre Park to Page Ave. This section, which largely parallels Page Avenue, connects with the St. Charles County Heritage Museum and the [Katy Trail](#), a 200-mile RTC Hall-of-Fame rail-trail, on the banks of the Missouri River. On the east side of the river, you can continue on the [Creve Coeur Park Trail](#) to enjoy picturesque natural settings.

Indian Meadows Park: These short two sections of trail run through Indian Meadows Park and nearby greenspace.

Olive Boulevard to Shaw Park: This urban section



Centennial Greenway

Missouri

States: Missouri

Counties: St. Charles, St. Louis

Length: 14.7 miles

Trail end points: City Centre Park, 1 St Peters
Centre Blvd. (St. Peters) to Skinker Blvd. (St.
Louis)

Trail surfaces: Concrete

Trail category: Greenway/Non-RT

Trail activities: Bike, Inline Skating, Walking

Parking & Trail Access

Parking lots can be found at either end of the trail's northernmost segment, off S. St. Peters Parkway and off Arena Parkway. At the trail's southern end, numerous parking lots can be found throughout Forest Park.



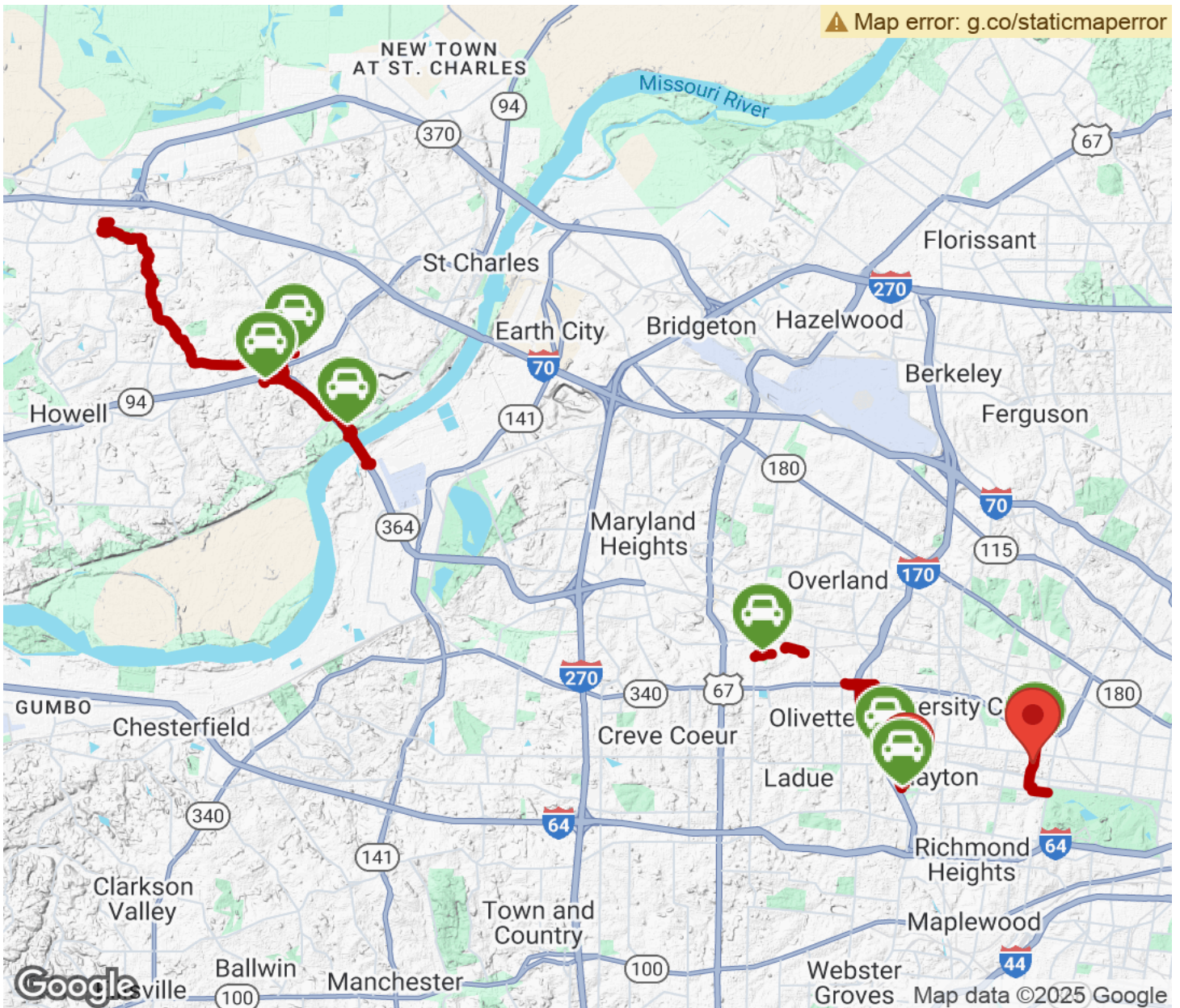
TrailLink
by Rails-to-Trails Conservancy

TrailLink.com



Centennial Greenway

Missouri



Trailhead



Restroom



Parking



Water Fountain



Tunnel



TrailLink
by Rails-to-Trails Conservancy

TrailLink.com