



2025

TrailLink Unlimited 

Guides



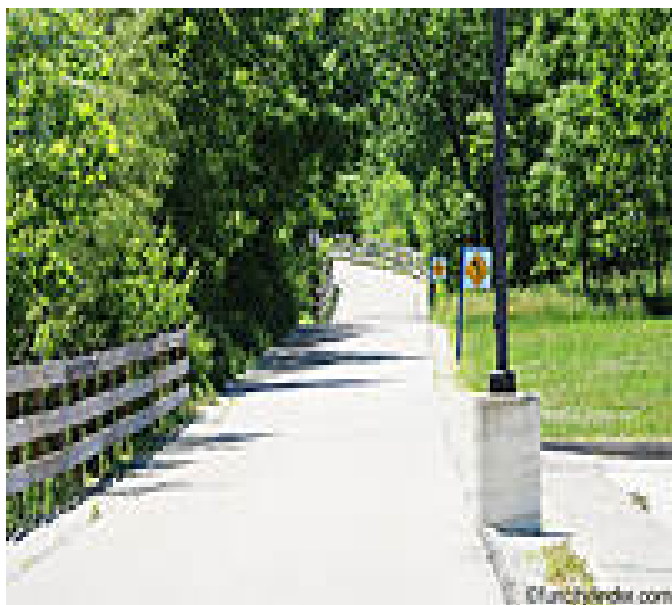
**Greyhound
Trail**
Indiana



Greyhound Trail

Indiana

The Greyhound Trail is sandwiched between a residential community and the Carmel High School Stadium. A portion of the



The Greyhound Trail is sandwiched between a residential community and the Carmel High School Stadium. A portion of the trail follows the former North Indianapolis Electric Interurban Railroad, and a highlight of the route is its passage over Cool Creek on a relocated historic bridge dating back to the 1920s.

Although short, you can continue your journey by connecting to the [Hagan-Burke Trail](#), which in turn connects to the [Monon Trail](#) that runs all the way south to Indianapolis.



TrailLink
by Rails-to-Trails Conservancy

TrailLink.com



Greyhound Trail

Indiana

States: Indiana

Counties: Hamilton

Length: 0.4miles

Trail end points: Hagan-Burke Trail east of N. Rangeline Rd. to Carmel High School Stadium at E. 136th St.

Trail surfaces: Asphalt

Trail category: Rail-Trail

Trail activities: Bike,Inline

Skating,Wheelchair Accessible,Walking,Cross
Country Skiing

Parking & Trail Access

Parking is available at the Carmel High School Stadium parking lot on E. 136th Street.



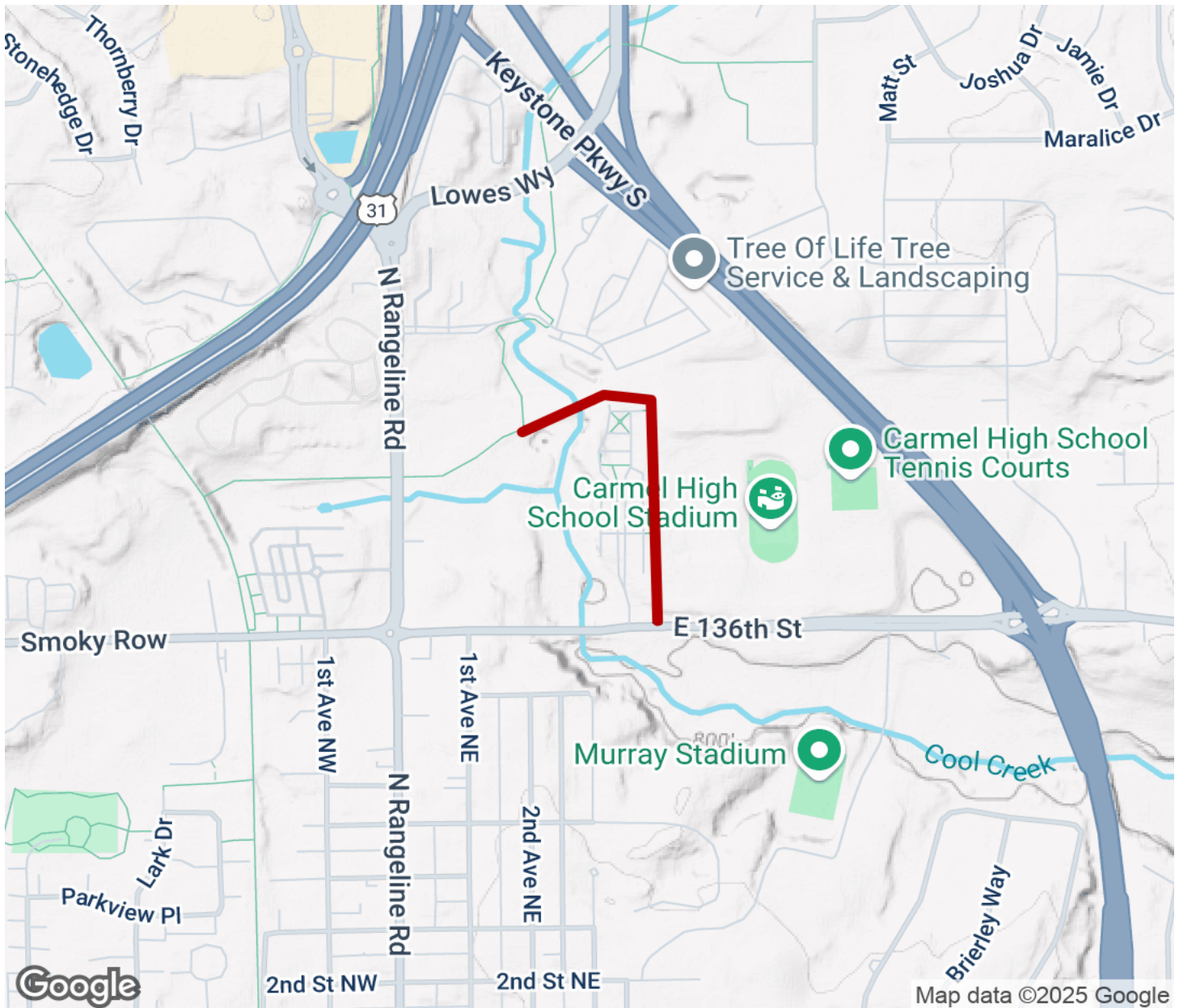
TrailLink
by Rails-to-Trails Conservancy

TrailLink.com



Greyhound Trail

Indiana



Map data ©2025 Google



Trailhead



Restroom



Parking



Water Fountain



Tunnel



TrailLink
by Rails-to-Trails Conservancy

TrailLink.com