



2026

TrailLink Unlimited



Guides



East Prairie Path

Illinois



East Prairie Path

Illinois

Monticello is a small, central Illinois town steeped in a railroad history it still celebrates. Its Chamber of Commerce has offices and



The East Prairie Path is also a rail-with-trail. On its immediate west side is the railway still used between the Railway Museum and the downtown Depot. It has open prairie farmland to the east and a narrow, mostly wooded ribbon of land separating it from the other tracks on the west. Towards its north end, there's a small, attractive rest area with a gazebo and picnic table. Also at the northern end is a restored concrete platform, sign and tribute to the old Dighton train stop there.

Monticello is a small, central Illinois town steeped in a railroad history it still celebrates. Its Chamber of Commerce has offices and special activities in the historic downtown Train Depot. And it has a large and very active Railway Museum that restores old railroad equipment and takes scheduled tour rides with restored cars and locomotives into the Depot from its yards and shops just north of town.

Monticello was once a hub of the electric Interurban Railway of the Illinois Traction System that linked dozens of small towns and cities across central Illinois. Its miles and miles of abandoned track and right-of-way are now being used to develop multi-use recreational trails like this one built and maintained by the City of Monticello.



East Prairie Path

Illinois

States: Illinois

Counties: Piatt

Length: 1miles

Trail end points: Township Rd. to E Grant St.

Trail surfaces: Asphalt

Trail category: Rail-Trail

Trail activities: Bike,Inline

Skating, Walking, Wheelchair Accessible, Cross
Country Skiing

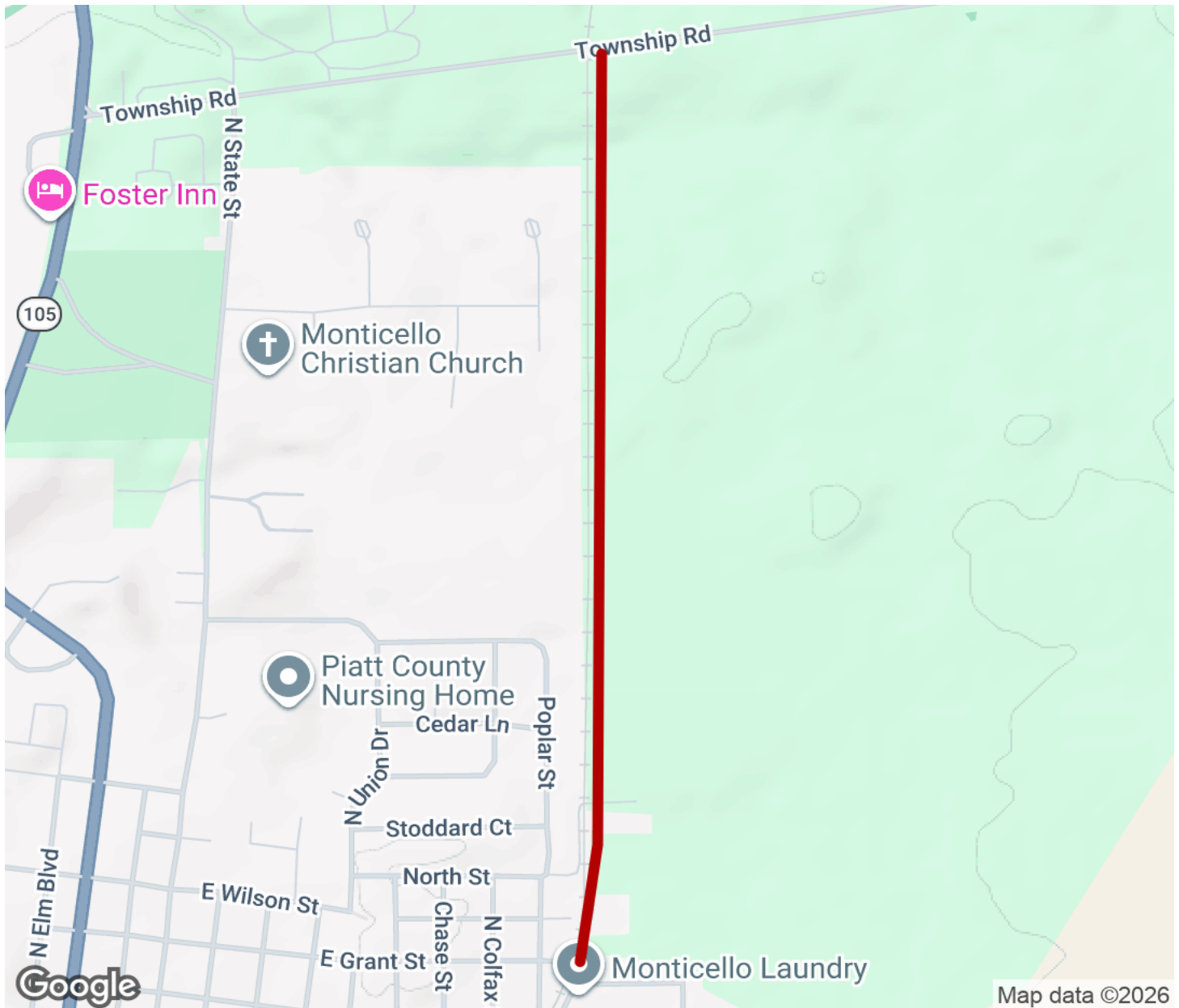
Parking & Trail Access

Just west of the north end of the trail, there is parking at nearby Valentine Park.



East Prairie Path

Illinois



Trailhead



Restroom



Parking



Water Fountain



Tunnel



TrailLink
by Rails-to-Trails Conservancy

TrailLink.com