



2025

TrailLink Unlimited 

Guides   



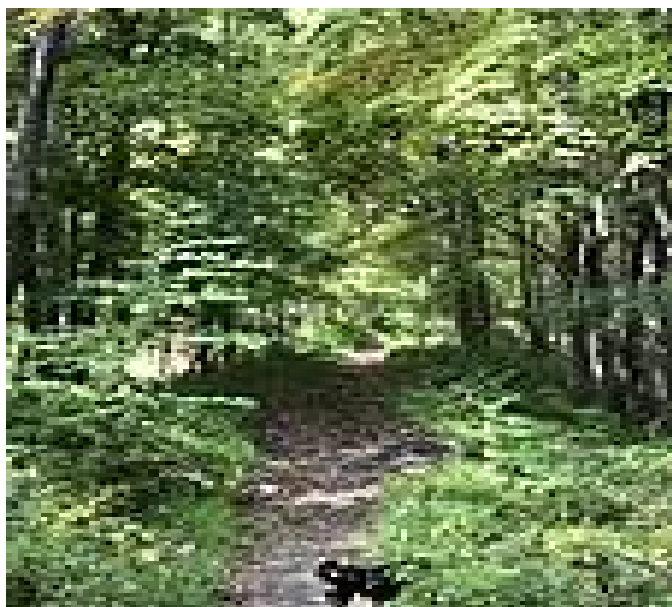
**Kennedy Trail**  
*New York*



## Kennedy Trail

New York

*The Kennedy Trail begins at Brick Hill Road and ends at the northwest corner of the 68-acre campus of John F. Kennedy*



The Kennedy Trail begins at Brick Hill Road and ends at the northwest corner of the 68-acre campus of John F. Kennedy Catholic High School in Somers.

The cinder trail, built on a former rail bed, winds through a heavily wooded area for just under 2 miles. Along the way, keep an eye out for old railroad ties and muddy patches of trail.

The town, which sits 30 miles from White Plains and 55 miles from New York City, is home to an IBM campus and Pepsi headquarters.

The campus is private property. Hikers must not park or otherwise trespass on the school's campus.



**TrailLink**  
by Rails-to-Trails Conservancy

**TrailLink.com**



## Kennedy Trail

*New York*

**States:** New York

**Counties:** Westchester

Length: 1.7miles

**Trail end points:** Brick Hill Road to John F.  
Kennedy Catholic High School (54 Route 138)

**Trail surfaces:** Cinder

**Trail category:** Rail-Trail

**Trail activities:** Bike, Mountain  
Biking, Walking

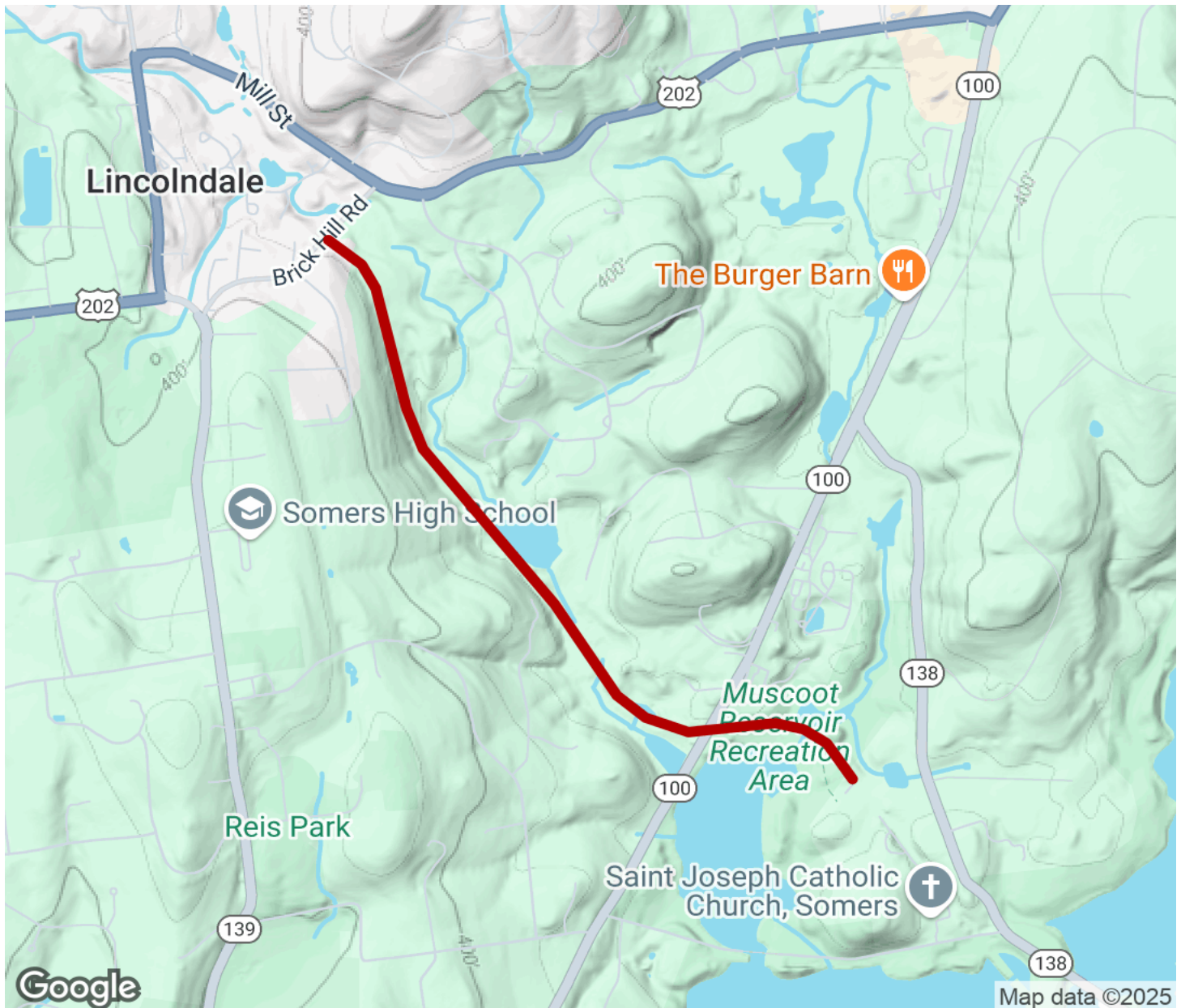
## Parking & Trail Access

Enter the trail on Brick Hill Road between the two boulders.



# Kennedy Trail

New York



Trailhead



Restroom



Parking



Water Fountain



Tunnel



**TrailLink**  
by Rails-to-Trails Conservancy

**TrailLink.com**