



2025

TrailLink Unlimited 

Guides



Brown Deer Recreational Trail

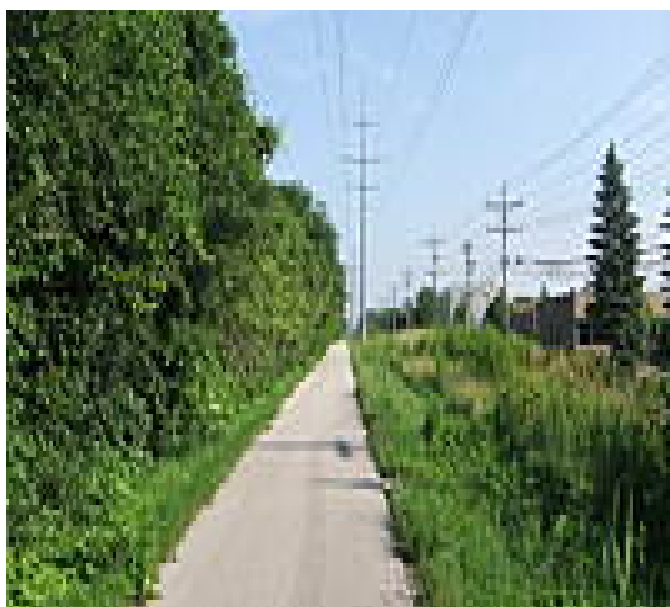
Wisconsin



Brown Deer Recreational Trail

Wisconsin

The Brown Deer Recreational Trail runs through the Village of Brown Deer, a suburb of Milwaukee. The tree-line route parallels



The Brown Deer Recreational Trail runs through the Village of Brown Deer, a suburb of Milwaukee. The tree-line route parallels an active rail line through commercial and residential areas. Mid-way, you can cross the tracks to enter the Village Park.

Although short (only a mile), the paved trail offers great connections between two other trails: the 30-mile [Ozaukee Interurban Trail](#) at its northern end (W. County Line Road), and the [Oak Leaf Trail](#) at its southern end (W. Brown Deer Road).



TrailLink
by Rails-to-Trails Conservancy

TrailLink.com



Brown Deer Recreational Trail

Wisconsin

States: Wisconsin

Counties: Milwaukee

Length: 1miles

Trail end points: W. County Line Rd. to W.
Brown Deer Rd./SR 100

Trail surfaces: Asphalt

Trail category: Rail-Trail

Trail activities: Bike, Walking

Parking & Trail Access

Plentiful parking can be found mid-way in Village Park (4800 West Green Brook Drive).



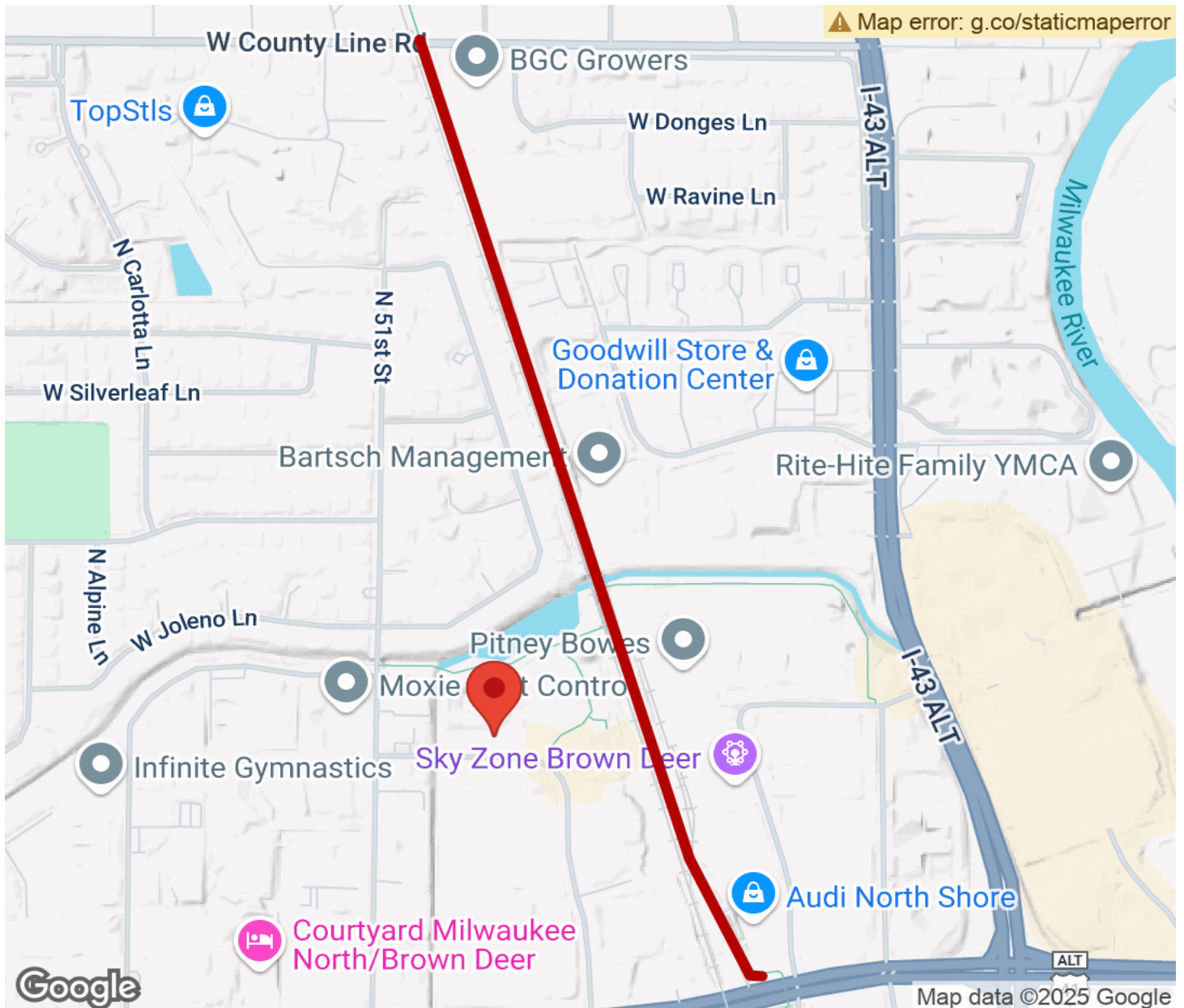
TrailLink
by Rails-to-Trails Conservancy

TrailLink.com



Brown Deer Recreational Trail

Wisconsin



Trailhead



Restroom



Parking



Water Fountain



Tunnel



TrailLink
by Rails-to-Trails Conservancy

TrailLink.com