



2025

TrailLink Unlimited 

Guides



## Brown Deer Recreational Trail

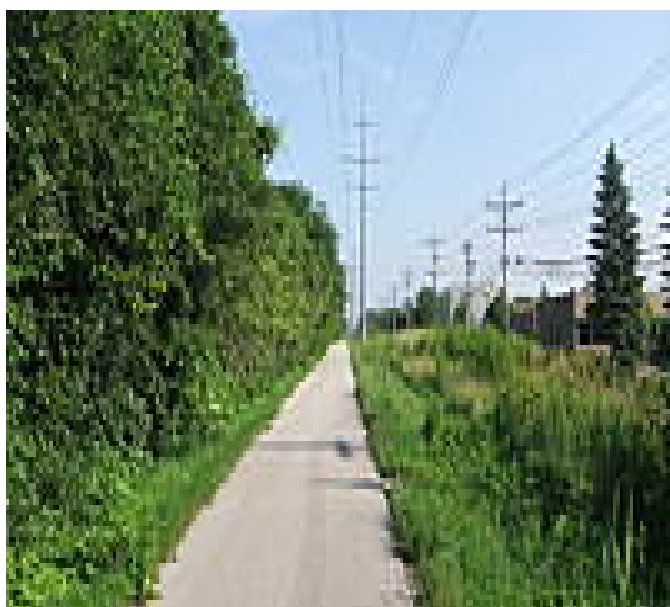
*Wisconsin*



## Brown Deer Recreational Trail

Wisconsin

*The Brown Deer Recreational Trail runs through the Village of Brown Deer, a suburb of Milwaukee. The tree-line route parallels*



The Brown Deer Recreational Trail runs through the Village of Brown Deer, a suburb of Milwaukee. The tree-line route parallels an active rail line through commercial and residential areas. Mid-way, you can cross the tracks to enter the Village Park.

Although short (only a mile), the paved trail offers great connections between two other trails: the 30-mile [Ozaukee Interurban Trail](#) at its northern end (W. County Line Road), and the [Oak Leaf Trail](#) at its southern end (W. Brown Deer Road).



**TrailLink**  
by Rails-to-Trails Conservancy

**TrailLink.com**



# Brown Deer Recreational Trail

*Wisconsin*

**States:** Wisconsin

**Counties:** Milwaukee

Length: 1miles

**Trail end points:** W. County Line Rd. to W.  
Brown Deer Rd./SR 100

**Trail surfaces:** Asphalt

**Trail category:** Rail-Trail

**Trail activities:** Bike, Walking

## Parking & Trail Access

Plentiful parking can be found mid-way in Village Park (4800 West Green Brook Drive).



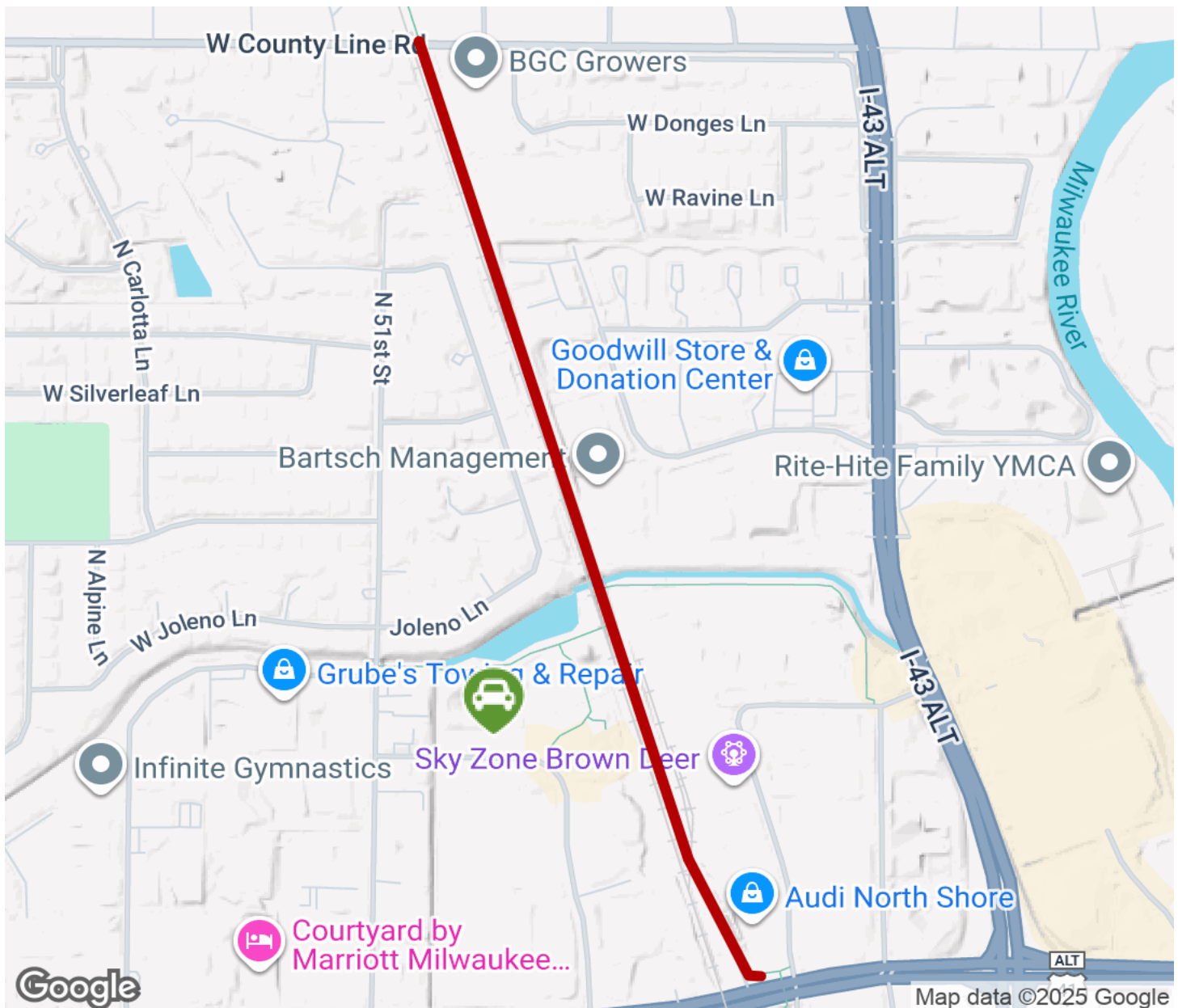
**TrailLink**  
by Rails-to-Trails Conservancy

**TrailLink.com**



# Brown Deer Recreational Trail

Wisconsin



Trailhead



Restroom



Parking



Water Fountain



Tunnel



**TrailLink**  
by Rails-to-Trails Conservancy

**TrailLink.com**