



2025

TrailLink Unlimited 

Guides



Clymer Trail
Pennsylvania



Clymer Trail

Pennsylvania

Clymer Trail offers a short, but pleasant route along a wooded hillside on Clymer Borough's west end. The rail-trail follows the



Clymer Trail offers a short, but pleasant route along a wooded hillside on Clymer Borough's west end. The rail-trail follows the former Sample Run Mine Branch of the Cherry Tree & Dixonville Railroad. Clymer commemorates its railroad heritage with a beautiful rest area kiosk and plaque at the site of its former Union Station.



TrailLink
by Rails-to-Trails Conservancy

TrailLink.com



Clymer Trail

Pennsylvania

States: Pennsylvania

Counties: Indiana

Length: 0.25miles

Trail end points: Clymer Ballfield, 290 Penn St.
to 10th St. (Clymer)

Trail surfaces: Asphalt

Trail category: Rail-Trail

Trail activities: Bike, Inline

Skating, Walking, Wheelchair Accessible

Parking & Trail Access

Ample parking is provided in the lots along both sides of Route 403, 0.1 miles north of east-west Route 286 in downtown Clymer, and on the north side of Route 286, one mile west of Clymer.



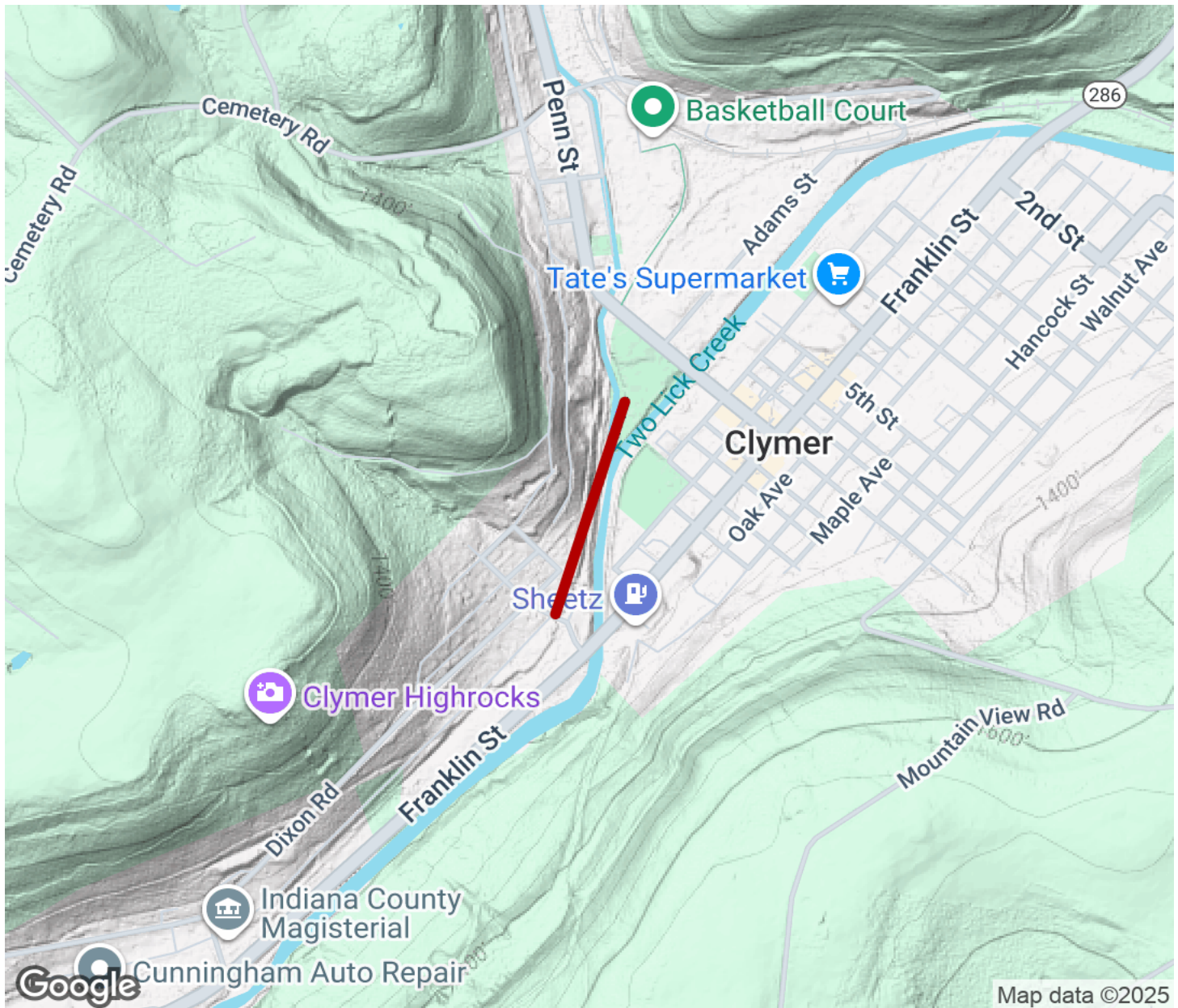
TrailLink
by Rails-to-Trails Conservancy

TrailLink.com



Clymer Trail

Pennsylvania



Trailhead



Restroom



Parking



Water Fountain



Tunnel



TrailLink
by Rails-to-Trails Conservancy

TrailLink.com