



2024

TrailLink Unlimited



Guides



**Hesse Trail**

*Illinois*



## Hesse Trail

Illinois

*Hesse Trail connects two neighborhoods and a park in the city of O'Fallon with plans to extend and connect it to other trails in the*



Hesse Trail connects two neighborhoods and a park in the city of O'Fallon with plans to extend and connect it to other trails in the large Metro-East area. It is a short, completely tree-covered rail-trail, well used by local residents. Except at its southern end, the trail runs along the top of an elevated earthen railbed with significant dropoffs on both sides.



# Hesse Trail

*Illinois*

**States:** Illinois

**Counties:** St. Clair

Length: 0.7miles

**Trail end points:** Illini Dr. to Charles St. and W. Washington St.

**Trail surfaces:** Asphalt

**Trail category:** Rail-Trail

**Trail activities:** Bike, Inline

Skating, Wheelchair Accessible, Walking, Cross Country Skiing

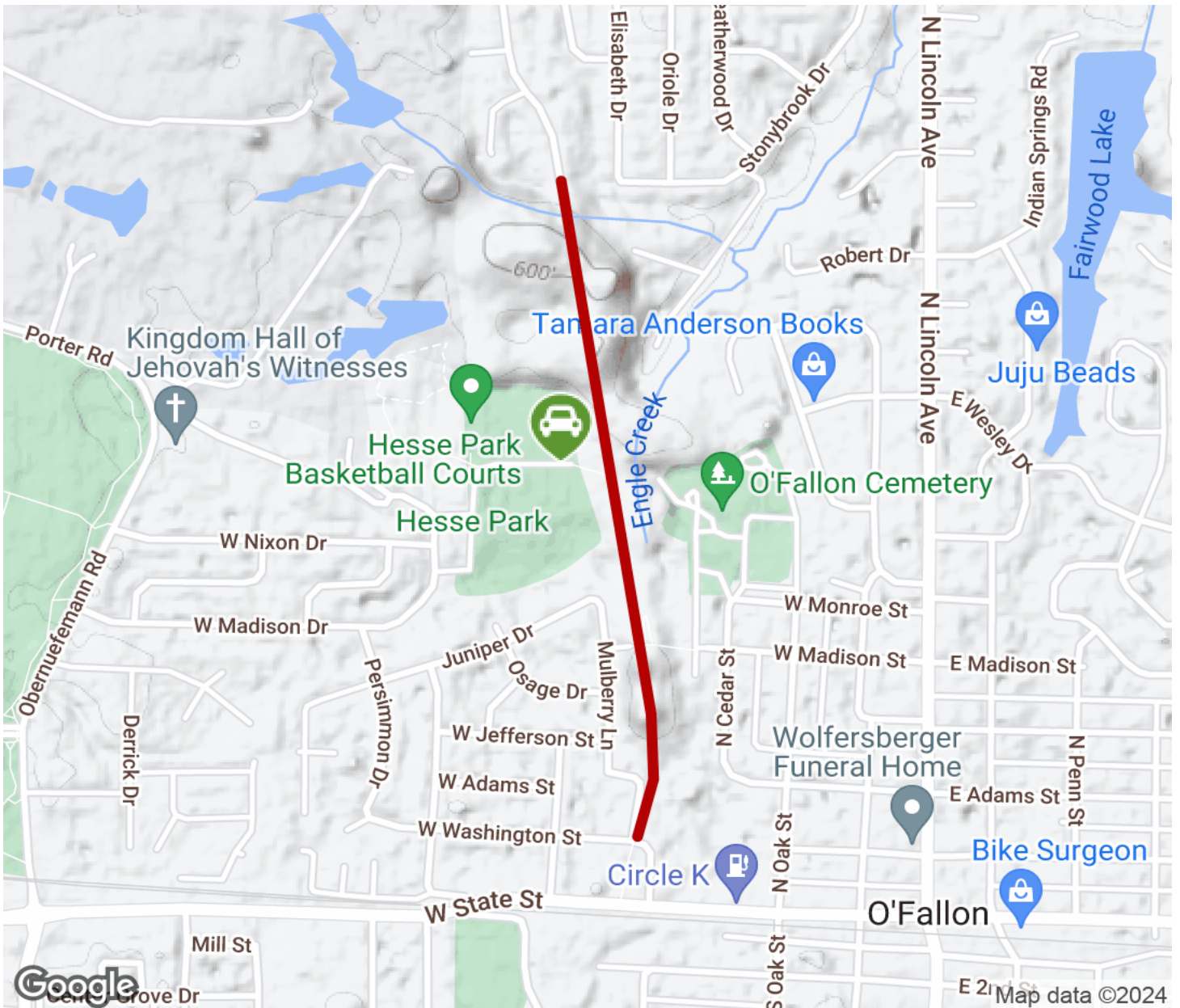
## Parking & Trail Access

From I-64, take Exit 16 to northbound N. Green Mount Rd. Proceed 1.5 miles, straight through the traffic circle at State St., and on to W. Madison St. Turn right and go 0.5 mile to the Hesse Park entrance on the right. Follow the road to the far parking lot, right by the trail entrance spur.



# Hesse Trail

Illinois



Trailhead



Restroom



Parking



Water Fountain



Tunnel



# TrailLink

by Rails-to-Trails Conservancy

[TrailLink.com](https://www.TrailLink.com)