



2024

TrailLink Unlimited 

Guides



# Equality to Glen O. Jones Lake Bike Trail

*Illinois*



## Equality to Glen O. Jones Lake Bike Trail

Illinois

*The Equality to Glen O. Jones Lake Bike Trail traverses an area where salt mining figured much in its early history. So did the Ohio*



farm and woodlands—all the way to the entrance of the Saline County State Fish and Wildlife Area and Glen O. Jones Lake. Ever forward on the trail are expansive views of the nearby Eagle Mountains.

Many riders add another beautiful 2.3 miles to this south end of the trail by riding Glen Jones Road around the entire perimeter of the lake. The park traffic is slow and light and makes for a great interlude before heading back to Equality.

The Equality to Glen O. Jones Lake Bike Trail traverses an area where salt mining figured much in its early history. So did the Ohio River, which lies just 12 miles to the east, down the Saline River. Now it's the nearby Shawnee National Forest that brings many visitors to this area with its natural beauty. The trail begins at the Ohio River Visitors Center, which has considerable interesting information about the area.

The first 1.2 miles of the trail are on village streets and a county roadway. It leaves Equality, crosses the Saline River, and heads out across open farmland for a short distance, before turning onto the rock trailway and returning to follow the river for about 0.7 mile. Once it leaves the river, it alternates between rock trail surface and country roads paved with oil-and-chip, and between



# Equality to Glen O. Jones Lake Bike Trail

*Illinois*

**States:** Illinois

**Counties:** Gallatin, Saline

Length: 5.6 miles

**Trail end points:** Ohio River Visitors Center (Equality) to Eagle Creek Rd. and Shawnee Forest Rd. (Saline County State Fish & Wildlife Area)

**Trail surfaces:** Asphalt, Crushed Stone

**Trail category:** Greenway/Non-RT

**Trail activities:** Bike, Walking

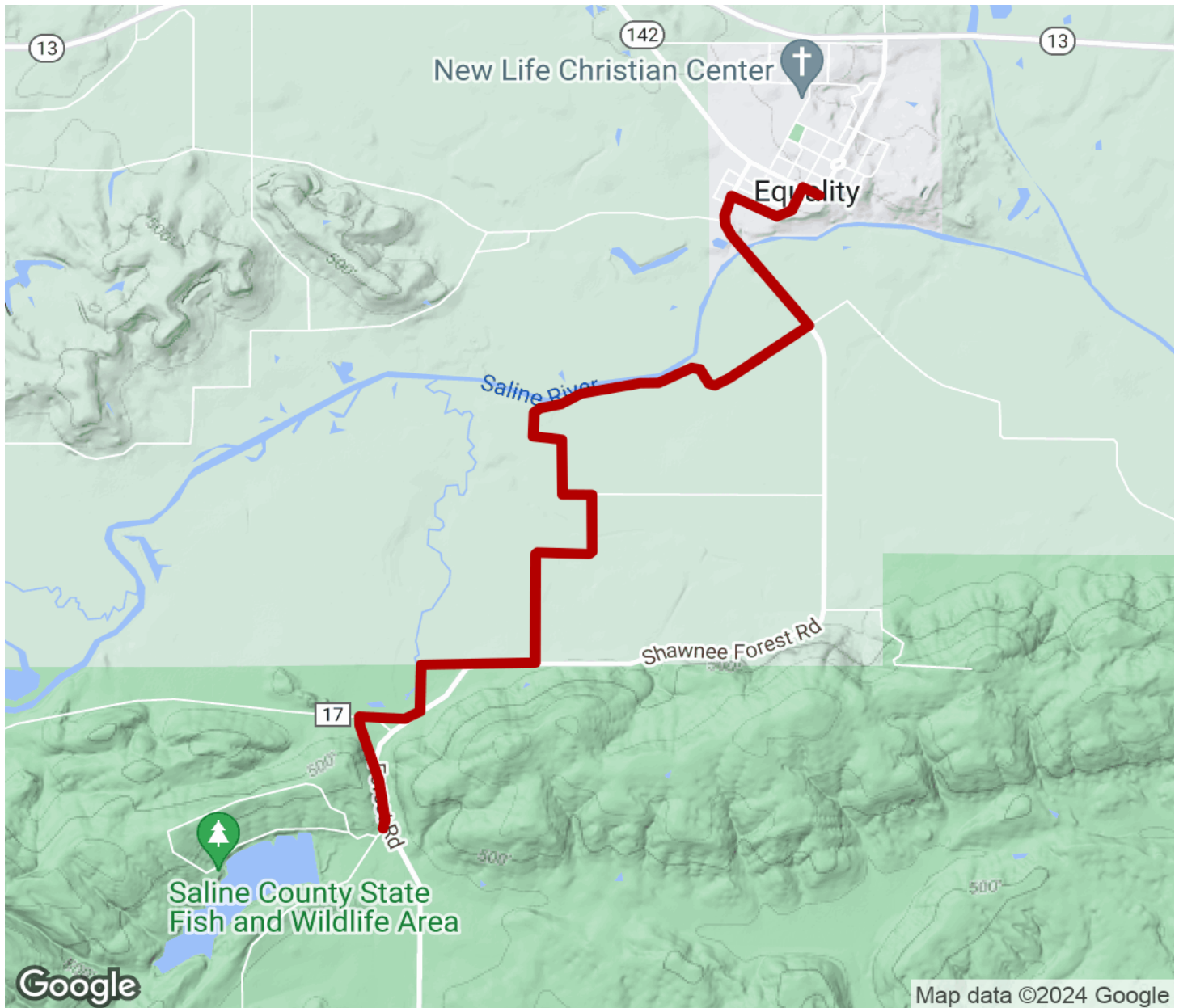
## Parking & Trail Access

From Interstate 57 in Marion, take Exit 54 and turn east onto State Route 13. Proceed 34 miles, through Harrisburg and on to State Route 142. Turn right and proceed 1.4 miles into Equality, to the route's end and the Visitors Center on the left. Parking is on the street.



# Equality to Glen O. Jones Lake Bike Trail

Illinois



Trailhead



Restroom



Parking



Water Fountain



Tunnel



**TrailLink**  
by Rails-to-Trails Conservancy

**TrailLink.com**