



2025

TrailLink Unlimited 

Guides



**St. George
Island Bike
Path**
Florida



St. George Island Bike Path

Florida

St. George Island, in the Florida Panhandle, is a 22-mile barrier island with Apalachicola Bay on one side and the Gulf of Mexico on



St. George Island, in the Florida Panhandle, is a 22-mile barrier island with Apalachicola Bay on one side and the Gulf of Mexico on the other. It has a laid-back vibe and is known for its uncrowded beaches. A 6-mile paved path parallels Gulf Beach Drive, the island's main road, from just outside St. George Plantation (a private gated community) to the entrance of St. George Island State Park on the island's eastern end. Enter the state park and you'll have the opportunity to pick up hiking trails for exploring its dunes, forest, and marshes. Although the linear path lacks shade, it provides a non-motorized transportation link between businesses.



TrailLink
by Rails-to-Trails Conservancy

TrailLink.com



St. George Island Bike Path

Florida

States: Florida

Counties: Franklin

Length: 6.3miles

Trail end points: Dr. Julian G. Bruce St. George Island State Park to intersection of Gulf Beach

Dr W & W 12th St (Eastpoint)

Trail surfaces: Asphalt, Concrete

Trail category: Greenway/Non-RT

Trail activities: Bike, Inline

Skating, Fishing, Wheelchair

Accessible, Walking

Parking & Trail Access

Parking is located adjacent to the Cape St. George Lighthouse and St. George Island Visitor Center, which are located at 2A East Gulf Beach Drive. The entrance to the parking area is just west of the physical address at West Gulf Beach Drive and Franklin Boulevard.

The eastern terminus of the trail is at the entrance to Dr. Julian G. Bruce St. George Island State Park (1900 E. Gulf Beach Drive).



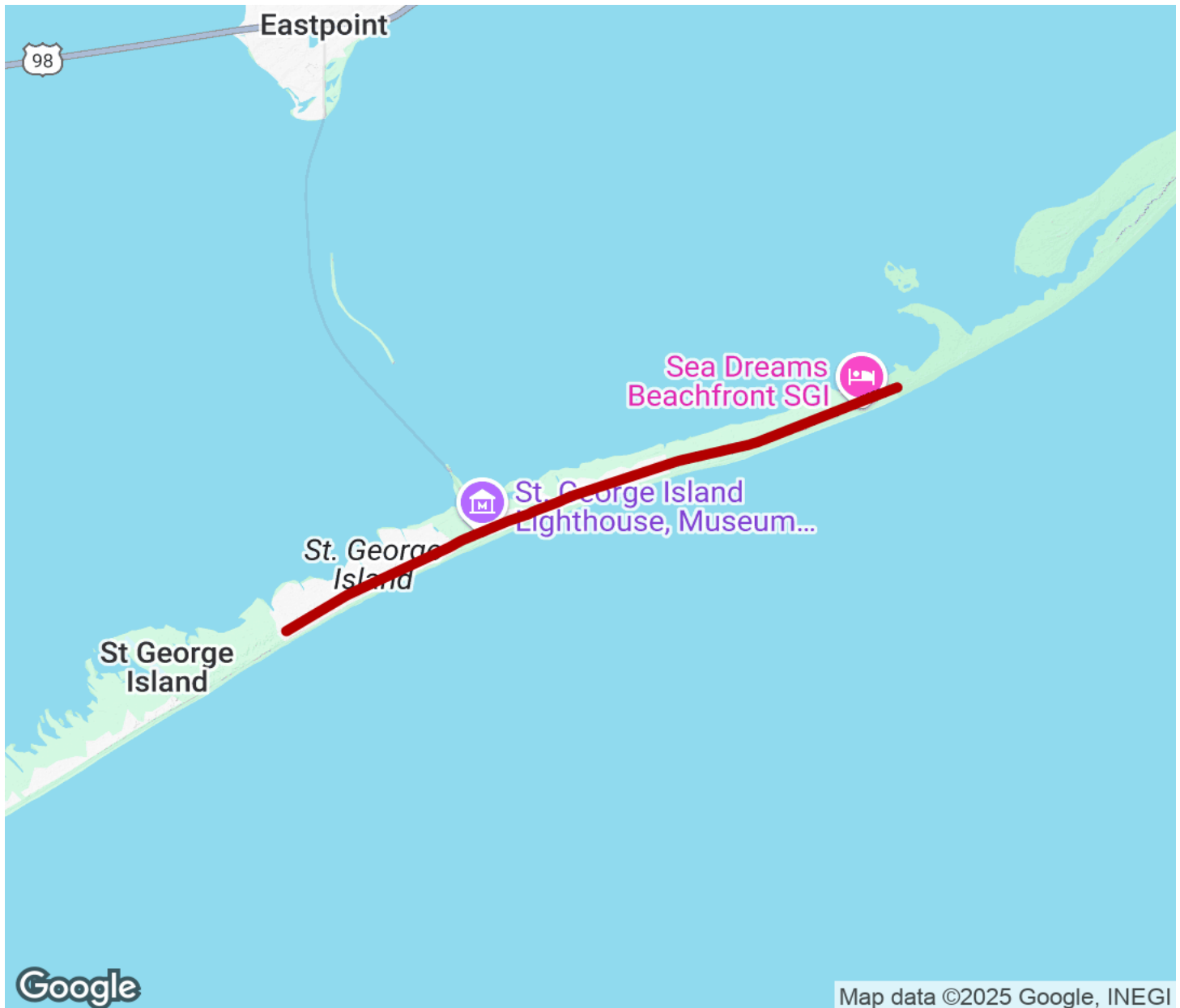
TrailLink
by Rails-to-Trails Conservancy

TrailLink.com



St. George Island Bike Path

Florida



Trailhead



Restroom



Parking



Water Fountain



Tunnel



TrailLink
by Rails-to-Trails Conservancy

TrailLink.com