



2025

TrailLink Unlimited 

Guides



**Bull Creek
Pedestrian
and Bike Trail**
Virginia



Bull Creek Pedestrian and Bike Trail

Virginia

The Bull Creek Pedestrian and Bike Trail, which will one day run 3 miles, lies in the coal-mining country of western Virginia.



The Bull Creek Pedestrian and Bike Trail, which will one day run 3 miles, lies in the coal-mining country of western Virginia. Following the route of a former Norfolk Southern coal train, the first phase of rail-trail winds 1.5 miles along a wooded creek between the communities of Harman and Maxie.



TrailLink
by Rails-to-Trails Conservancy

TrailLink.com



Bull Creek Pedestrian and Bike Trail

Virginia

States: Virginia

Counties: Buchanan

Length: 1.5miles

Trail end points: SR 601 at Convict Hollow
(Maxie) to SR 614 at Belcher Branch (Harman)

Trail surfaces: Crushed Stone

Trail category: Rail-Trail

Trail activities: Bike, Walking

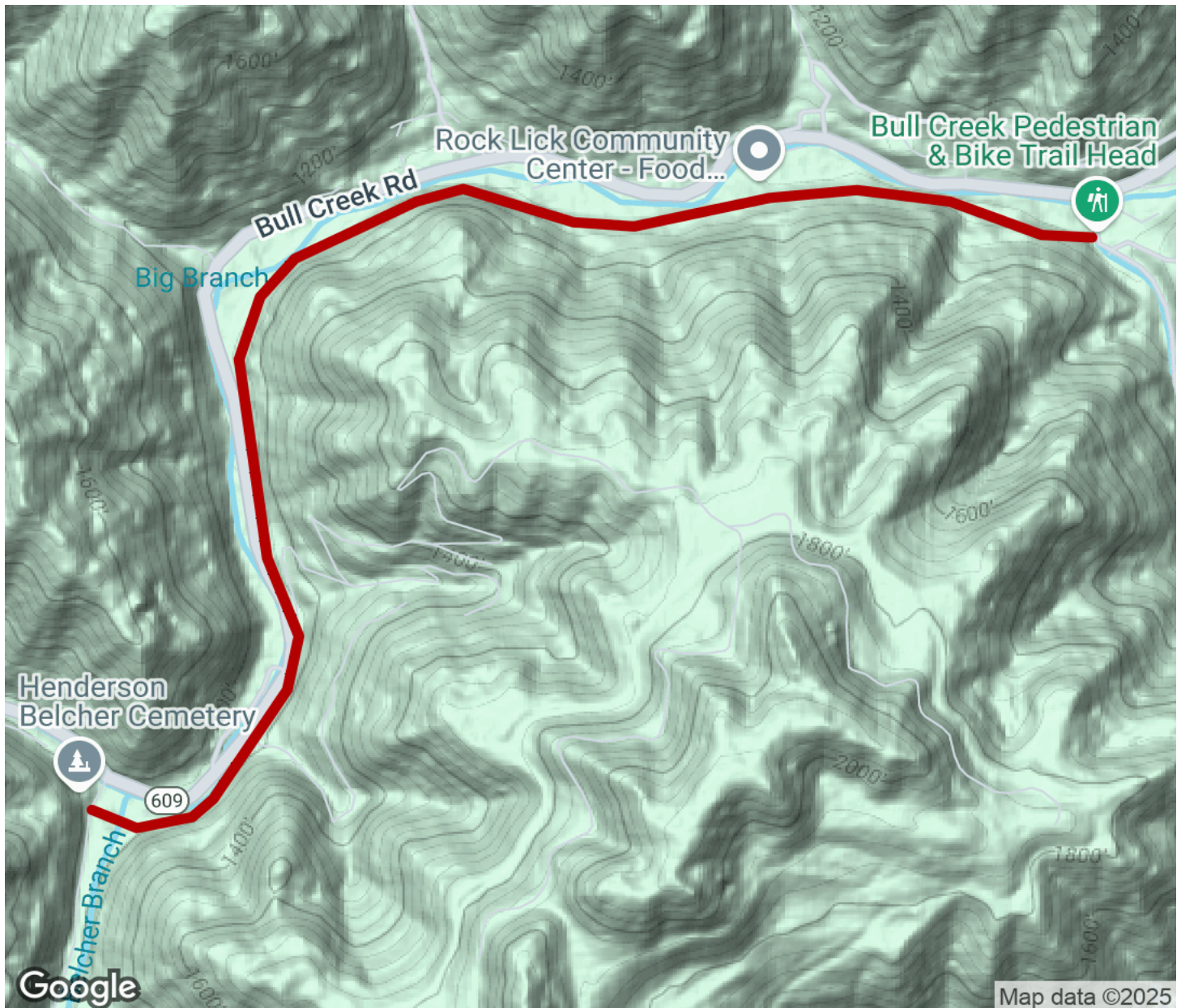
Parking & Trail Access

The trail access point lies near Maxie, about one mile west of US 460, along State Route 609, near the State Route 601 intersection.



Bull Creek Pedestrian and Bike Trail

Virginia



Trailhead



Restroom



Parking



Water Fountain



Tunnel



TrailLink
by Rails-to-Trails Conservancy

TrailLink.com