



2025

TrailLink Unlimited 

Guides



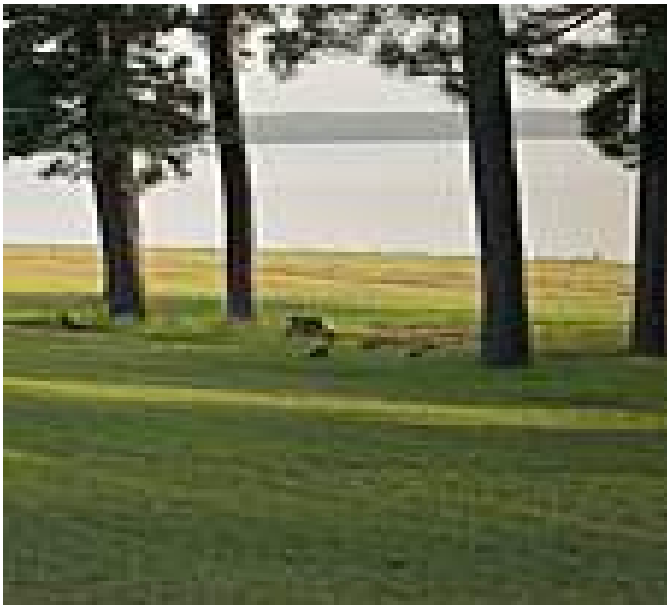
**Chisha Foka
Multi-Use
Trail**
Mississippi



Chisha Foka Multi-Use Trail

Mississippi

Chisha Foka Multi-Use Trail (alternatively known as the Ridgeland Natchez Trace Multi-Use Trail) offers a scenic trip paralleling



of Ridgeland proper. A pretty pedestrian bridge adjacent to the city's water tower passes over a set of railroad tracks and Madison Drive. The trail now follows the opposite (north) side of the Natchez Trace Parkway, and remains so for the rest of its journey.

The parkway's bridge over I-55 includes a divided lane for bicyclists and pedestrians, after which trail-goers will be dropped off south of Renaissance at Colony Park, an upscale shopping complex. This is roughly the halfway point for the trail. It continues through mostly wooded areas until its end near the Madison County line.

Chisha Foka Multi-Use Trail (alternatively known as the Ridgeland Natchez Trace Multi-Use Trail) offers a scenic trip paralleling Natchez Trace Parkway just north of Jackson. Portions of the trail which are managed by the National Park Service were renamed the Chisha Foka Multi-Use Trail, to honor the Choctaw heritage of the region. The 10-mile paved pathway begins on the southwestern shores of the Ross Barnett Reservoir and dives immediately into woodlands.

As the trail approaches Highway 51, trail-goers have an opportunity to leave the woodlands to access restaurants at Trace Station Shopping Center near the intersection of the highway and Jackson Street.

After crossing Highway 51, the trail enters the community



TrailLink
by Rails-to-Trails Conservancy

TrailLink.com



Chisha Foka Multi-Use Trail

Mississippi

States: Mississippi

Counties: Madison

Length: 10.5miles

Trail end points: Natchez Trace Parkway to
Natchez Trace Village Lake Dam

Trail surfaces: Asphalt

Trail category: Greenway/Non-RT

Trail activities: Bike,Inline

Skating,Wheelchair Accessible,Walking

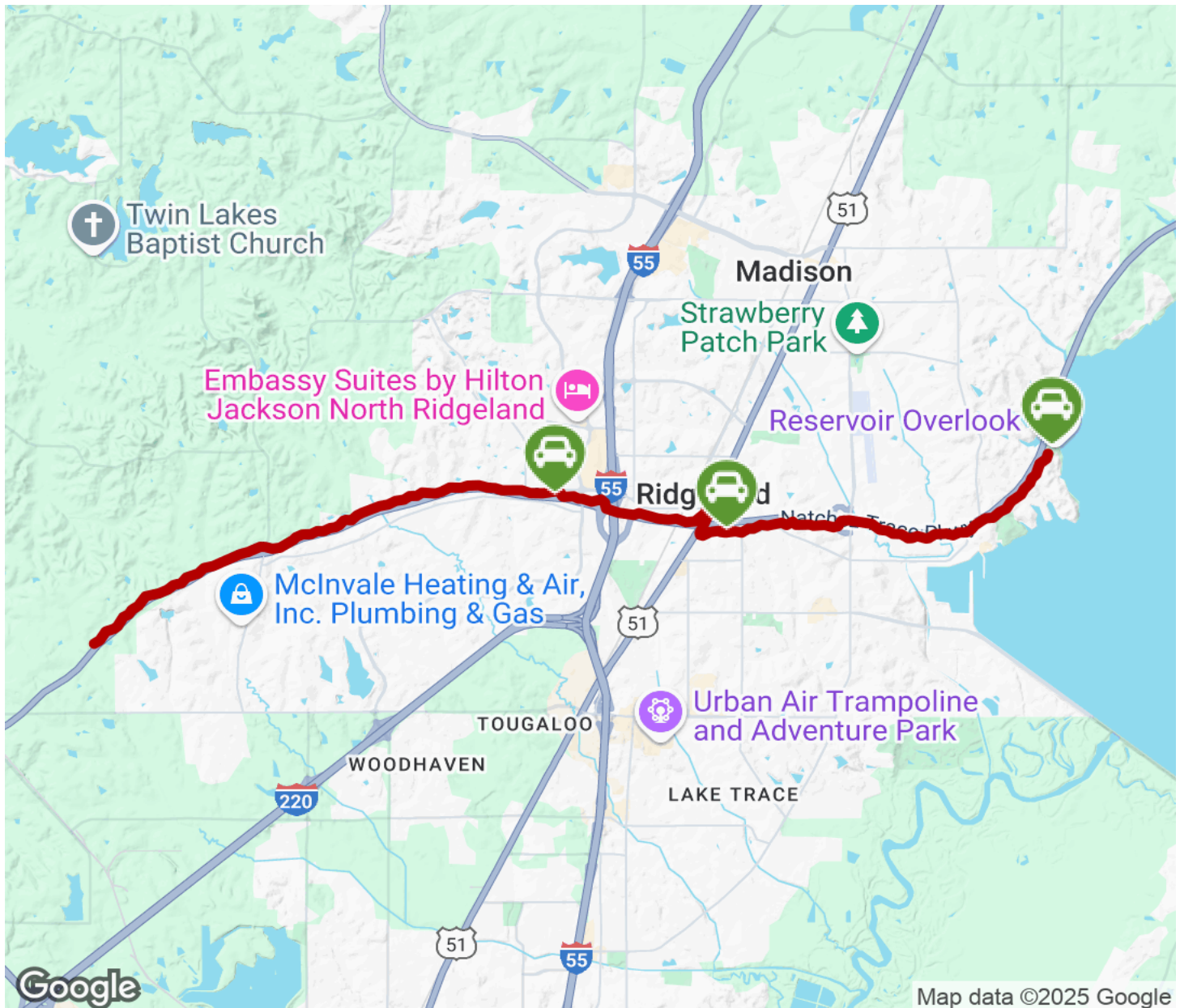
Parking & Trail Access

On the east end of the trail, parking is available at Old Trace Park, off Post Road. Along the trail, the shopping areas of Trace Station (500 Highway 51) and Renaissance at Colony Park (1000 Highland Colony Parkway) also have parking lots.



Chisha Foka Multi-Use Trail

Mississippi



Trailhead



Restroom



Parking



Water Fountain



Tunnel



TrailLink
by Rails-to-Trails Conservancy

TrailLink.com