



2024

TrailLink Unlimited 

Guides



Main Street Bike Path

Illinois



Main Street Bike Path

Illinois

In the Village of Roscoe, a paved path of just over a mile parallels Main Street (which becomes Frontage Road) and then continues



In the Village of Roscoe, a paved path of just over a mile parallels Main Street (which becomes Frontage Road) and then continues along the south side of McDonald Road, a quiet residential street. Near the intersection of the two streets, the trail offers access to the community's YMCA (9901 Main Street). As the trail winds through the northern Illinois suburb, stands of trees often line one side of the path or the other, making for a pleasant journey. The trail can be used year-round as it's plowed in winter.

For a longer journey, connections to the [Leland Path](#) and [Riverside Recreational Path](#) are possible a few blocks north of the trail's northern end.



Main Street Bike Path

Illinois

States: Illinois

Counties: Winnebago

Length: 1.2miles

Trail end points: McDonald Road and
Rambouillet Ridge to Main Street and Bridge
Street

Trail surfaces: Asphalt

Trail category: Greenway/Non-RT

Trail activities: Bike, Inline
Skating, Wheelchair Accessible, Walking

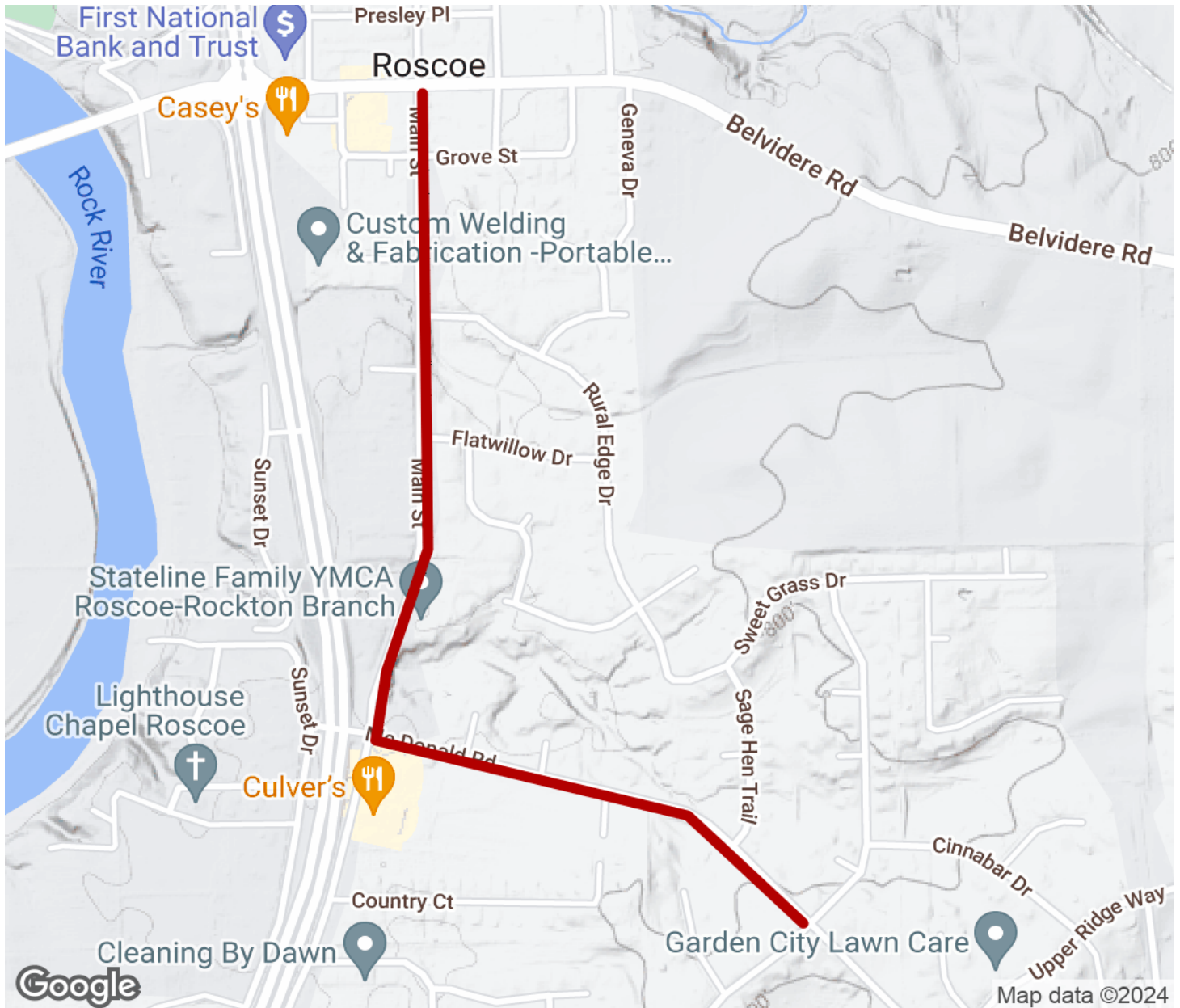
Parking & Trail Access

Street parking is available in downtown Roscoe.



Main Street Bike Path

Illinois



Trailhead



Restroom



Parking



Water Fountain



Tunnel



TrailLink
by Rails-to-Trails Conservancy

TrailLink.com