



2025

TrailLink Unlimited 

Guides



**Rieke Park  
Trail**  
*Indiana*



## Rieke Park Trail

Indiana

*The Rieke Park Trail runs behind the large community park in Auburn, Indiana, on an abandoned New York Central Railroad*



The Rieke Park Trail runs behind the large community park in Auburn, Indiana, on an abandoned New York Central Railroad corridor. The paved trail is shaded for most of its route, although it emerges into open fields near the north end. Connections to Worth Road and N. Van Buren Street offer access to residents of the neighborhoods adjoining the trail to the east.

The popular Rieke Park is located near the trail's midpoint. The park offers a playground, basketball court, picnic pavilions, soccer fields, baseball diamonds, horseshoe courts and restrooms.



**TrailLink**  
by Rails-to-Trails Conservancy

**TrailLink.com**



# Rieke Park Trail

*Indiana*

**States:** Indiana

**Counties:** De Kalb

Length: 1.2miles

**Trail end points:** North St. east of Indiana Ave.  
to Betz Rd. and Southgate Blvd.

**Trail surfaces:** Asphalt

**Trail category:** Rail-Trail

**Trail activities:** Bike, Inline

Skating, Wheelchair Accessible, Walking

## Parking & Trail Access

Ample parking for the trail is available at Rieke Park on Indiana Avenue. Continue from the parking lot on foot or bike between the baseball diamonds to the Rieke Park Trail just beyond the outfield fences.



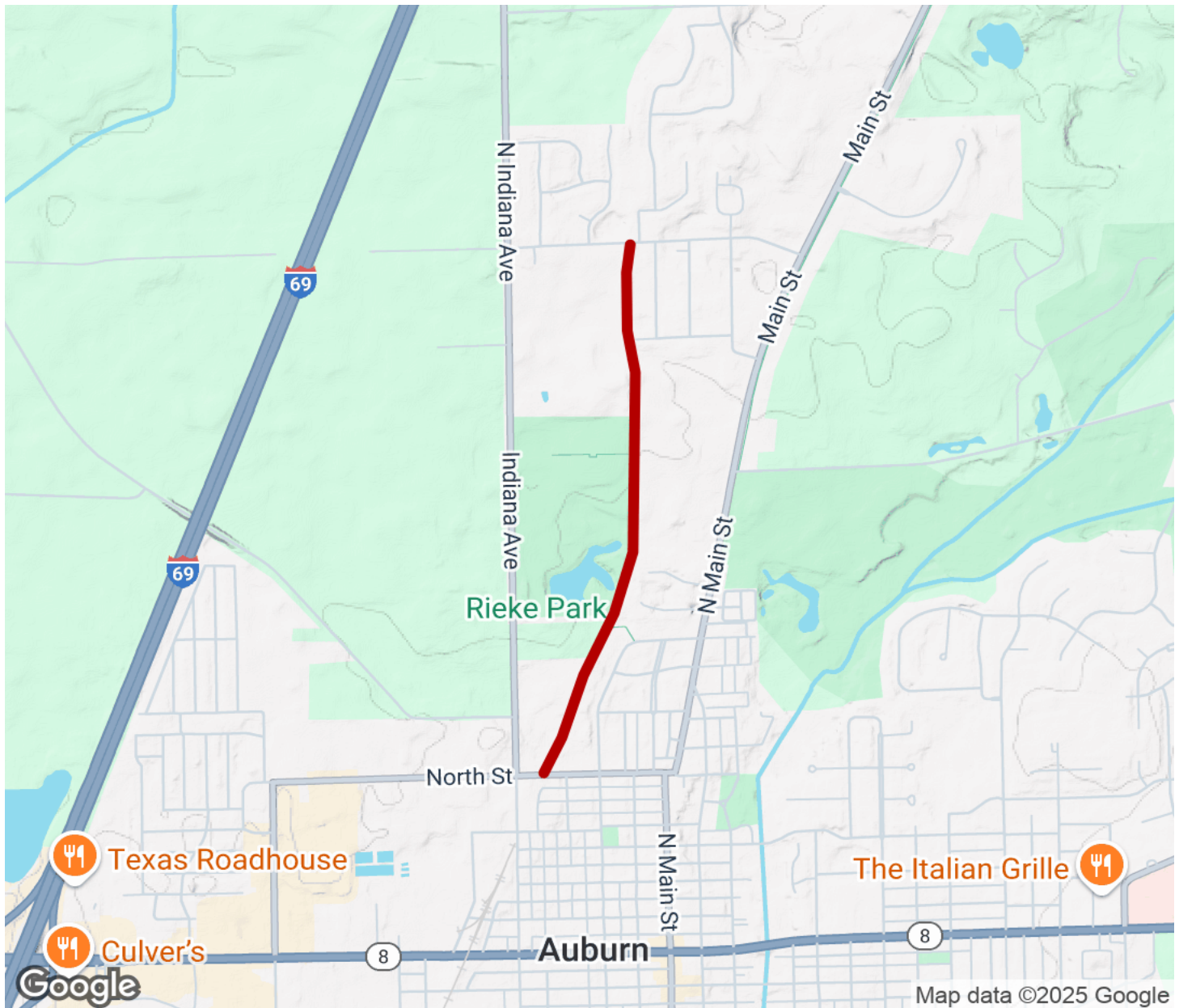
**TrailLink**  
by Rails-to-Trails Conservancy

**TrailLink.com**



# Rieke Park Trail

Indiana



Trailhead



Restroom



Parking



Water Fountain



Tunnel



**TrailLink**  
by Rails-to-Trails Conservancy

**TrailLink.com**