



2025

TrailLink Unlimited 

Guides



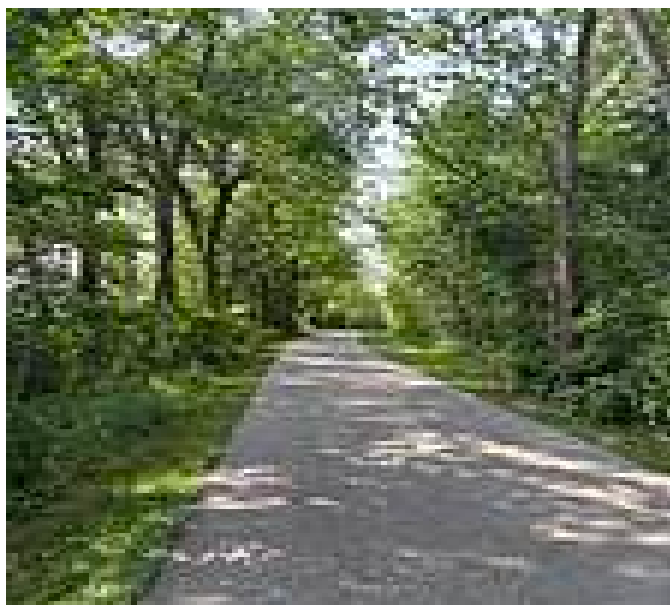
**Rieke Park
Trail**
Indiana



Rieke Park Trail

Indiana

The Rieke Park Trail runs behind the large community park in Auburn, Indiana, on an abandoned New York Central Railroad



The Rieke Park Trail runs behind the large community park in Auburn, Indiana, on an abandoned New York Central Railroad corridor. The paved trail is shaded for most of its route, although it emerges into open fields near the north end. Connections to Worth Road and N. Van Buren Street offer access to residents of the neighborhoods adjoining the trail to the east.

The popular Rieke Park is located near the trail's midpoint. The park offers a playground, basketball court, picnic pavilions, soccer fields, baseball diamonds, horseshoe courts and restrooms.



TrailLink
by Rails-to-Trails Conservancy

TrailLink.com



Rieke Park Trail

Indiana

States: Indiana

Counties: De Kalb

Length: 1.2miles

Trail end points: North St. east of Indiana Ave.
to Betz Rd. and Southgate Blvd.

Trail surfaces: Asphalt

Trail category: Rail-Trail

Trail activities: Bike,Inline

Skating,Wheelchair Accessible,Walking

Parking & Trail Access

Ample parking for the trail is available at Rieke Park on Indiana Avenue. Continue from the parking lot on foot or bike between the baseball diamonds to the Rieke Park Trail just beyond the outfield fences.



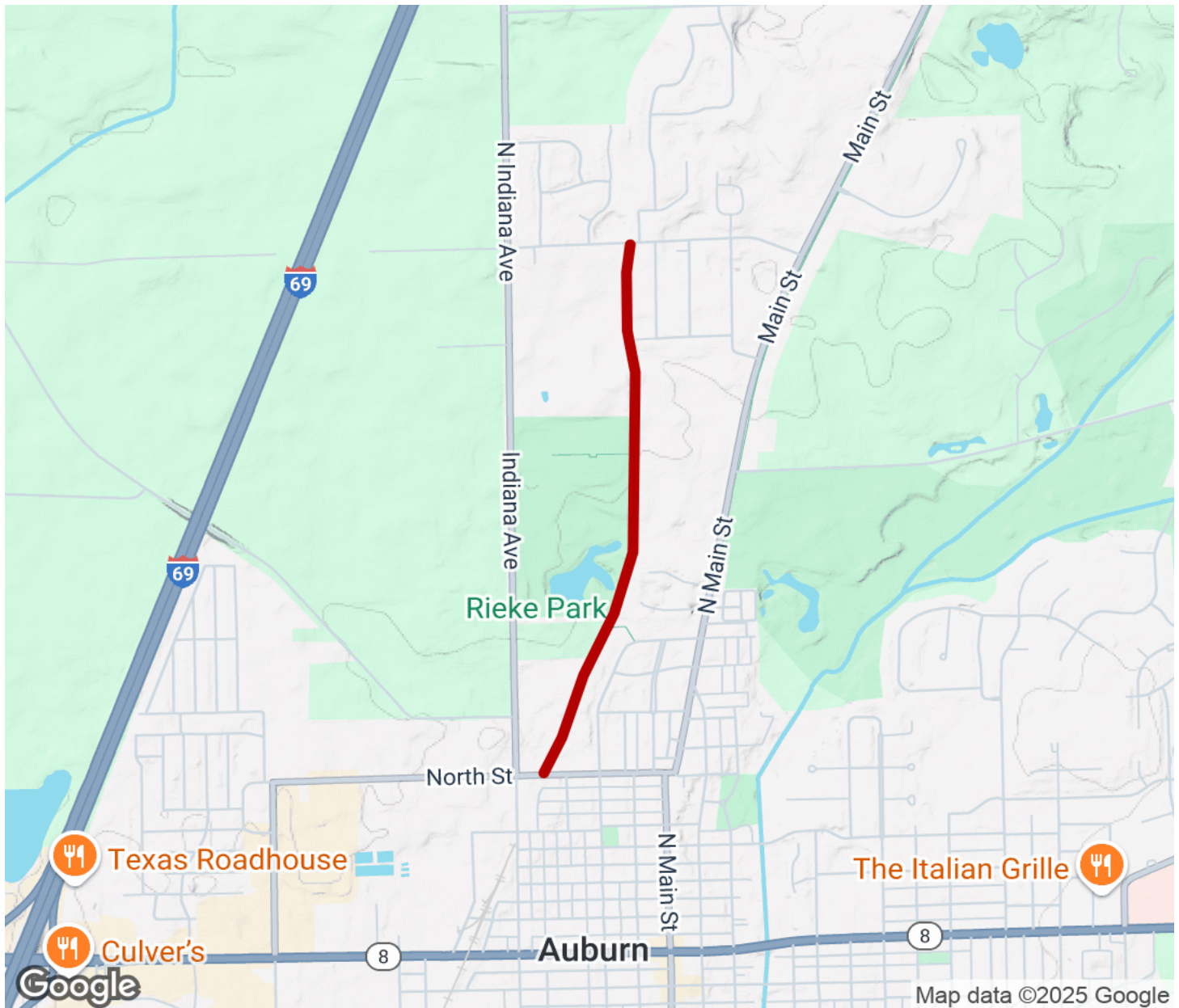
TrailLink
by Rails-to-Trails Conservancy

TrailLink.com



Rieke Park Trail

Indiana



Trailhead



Restroom



Parking



Water Fountain



Tunnel



TrailLink
by Rails-to-Trails Conservancy

TrailLink.com