



2025

TrailLink Unlimited 

Guides



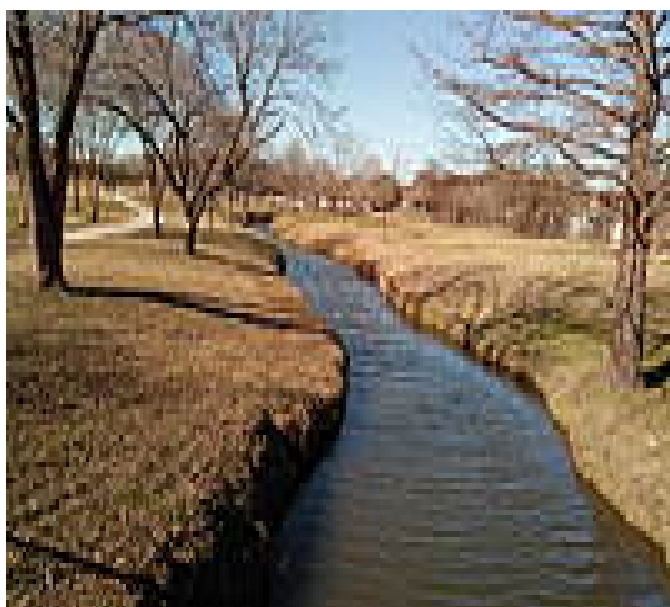
**Hike and Bike
Trail (Taylor)**
Texas



Hike and Bike Trail (Taylor)

Texas

The Hike and Bike Trail runs just over 3 miles through the heart of Taylor, a suburb of Austin. The pathway connects neighborhoods,



The Hike and Bike Trail runs just over 3 miles through the heart of Taylor, a suburb of Austin. The pathway connects neighborhoods, schools, and several parks, including Robinson Park, Murphy Park, and Bull Branch Park. These parks provide a multitude of recreational amenities, such as athletic fields, playgrounds, picnic tables, and restrooms. In Murphy Park, the trail also winds along a lake, where fishing is permitted.



TrailLink
by Rails-to-Trails Conservancy

TrailLink.com



Hike and Bike Trail (Taylor)

Texas

States: Texas

Counties: Williamson

Length: 3.4miles

Trail end points: Robinson Park to Paseman
Elementary School

Trail surfaces: Asphalt, Concrete, Crushed
Stone

Trail category: Greenway/Non-RT

Trail activities: Bike, Walking

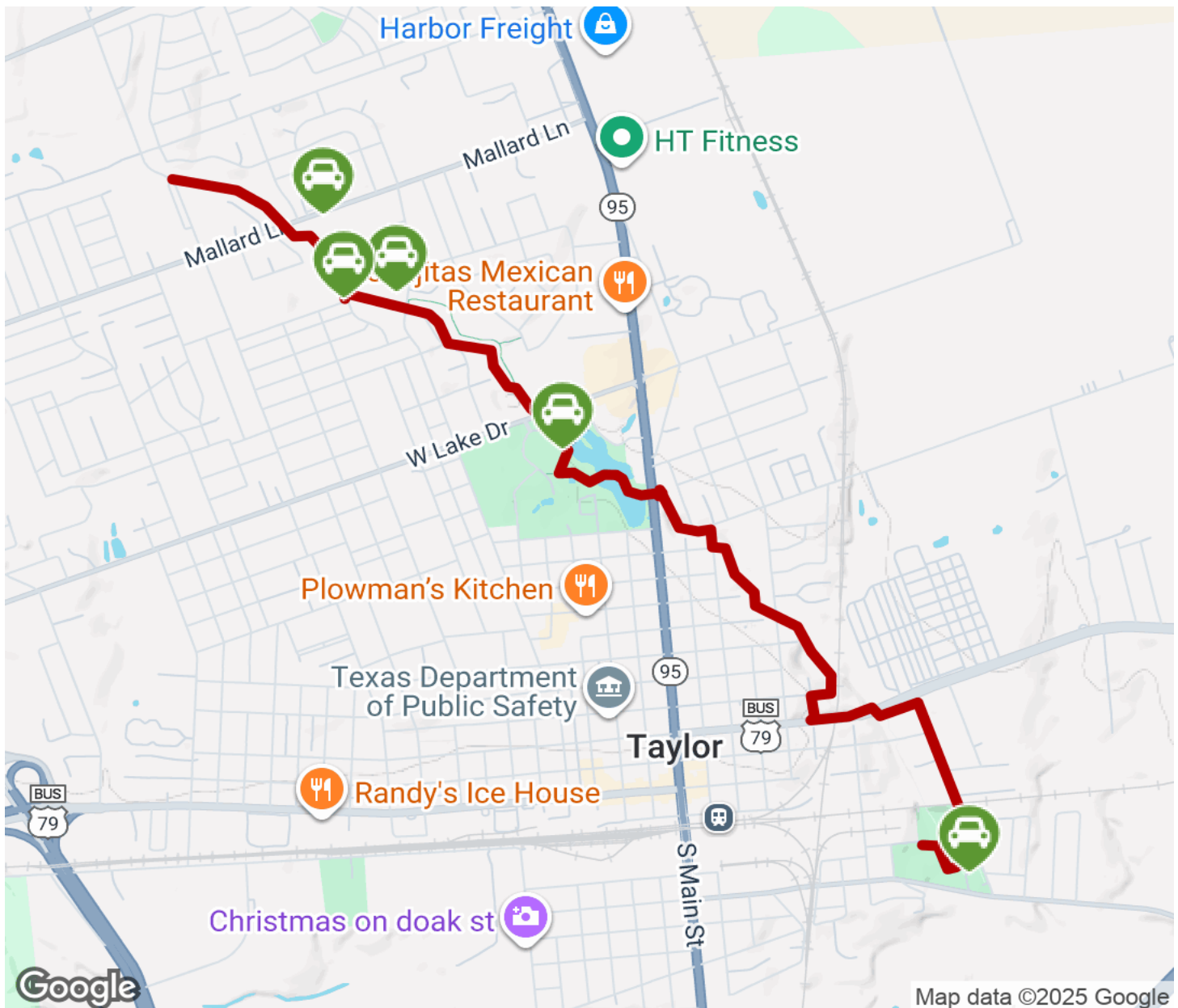
Parking & Trail Access

Parking and restrooms are available in Robinson Park (260 S. Dolan Street), Murphy Park (1600 Veterans Drive), and Bull Branch Park (Lynn and Davis Streets).



Hike and Bike Trail (Taylor)

Texas



Trailhead



Restroom



Parking



Water Fountain



Tunnel



TrailLink
by Rails-to-Trails Conservancy

TrailLink.com