



2025

TrailLink Unlimited 

Guides



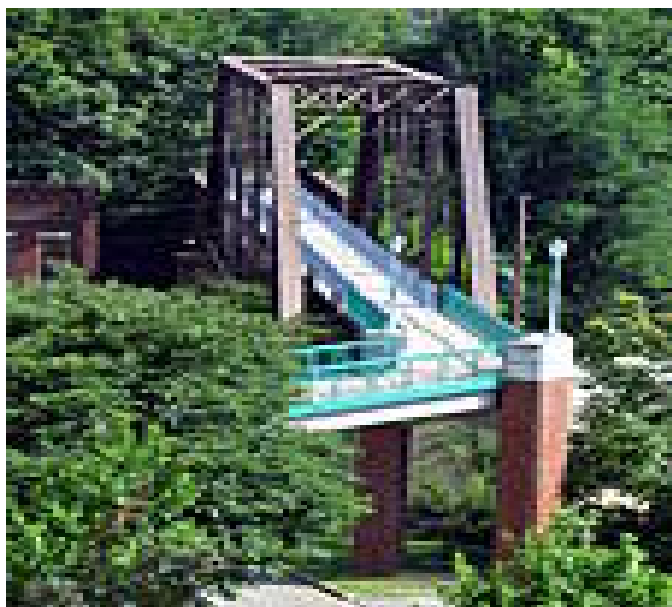
Upland Trail
Tennessee



Upland Trail

Tennessee

Although short, the Upland Trail in downtown Clarksville features three interesting bridges. The first, at its northern end, connects it



Although short, the Upland Trail in downtown Clarksville features three interesting bridges. The first, at its northern end, connects it to the [Cumberland Riverwalk](#), a beautiful and lively waterfront promenade.

Continuing south along Spring Street, the rail-trail features two former railroad trestles, one over Commerce Street and the other (formerly used by Tennessee Central), overlooking Valleybrook Park. Note that the trail does not provide access to the park, however.



TrailLink
by Rails-to-Trails Conservancy

TrailLink.com



Upland Trail

Tennessee

States: Tennessee

Counties: Montgomery

Length: 0.6miles

Trail end points: Cumberland Riverwalk
pedestrian bridge to Corman Bridge

Trail surfaces: Asphalt

Trail category: Rail-Trail

Trail activities: Bike, Walking, Wheelchair
Accessible

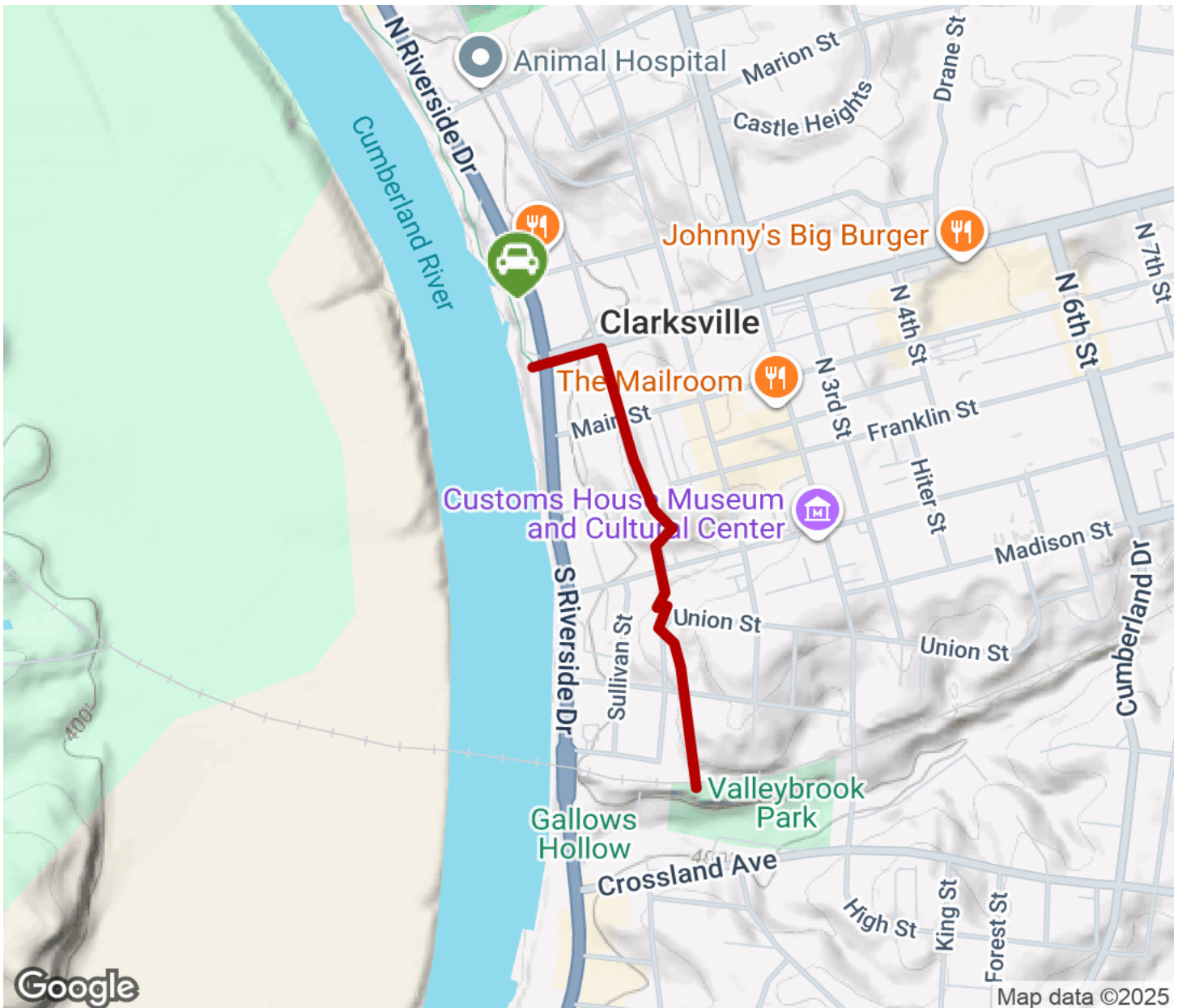
Parking & Trail Access

Parking is available just north of the trail in McGregor Park (640 N. Riverside Drive).



Upland Trail

Tennessee



Trailhead



Restroom



Parking



Water Fountain



Tunnel



TrailLink
by Rails-to-Trails Conservancy

TrailLink.com