



2025

TrailLink Unlimited 

Guides   



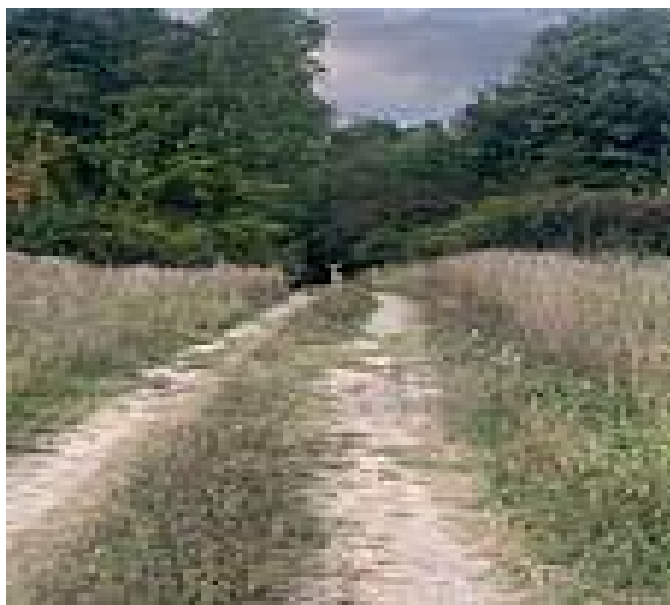
**Fred Meijer  
Standale Trail**  
*Michigan*



## Fred Meijer Standale Trail

Michigan

*The Fred Meijer Standale Trail—one of several trails in western Michigan named for the grocery magnate and philanthropist who*



Road. Trail users should exercise caution at busy road crossings.

The Fred Meijer Standale Trail—one of several trails in western Michigan named for the grocery magnate and philanthropist who donated generously to their development—connects retail, civic and residential centers in Walker with Millennium Park along the Grand River. Both the [Fred Meijer Millennium Trail](#) and [Kent Trails](#) system in the sprawling 1,500-acre park provide numerous recreational opportunities for Walker residents.

Extending north from Millennium Park, the Fred Meijer Standale Trail follows Maynard Avenue before breaking off from the road to share electric utility corridors. The arrow-straight corridors allow for a direct route past residential areas of Walker to retail and civic hubs on Lake Michigan Drive/State Route 45 and Remembrance



# Fred Meijer Standale Trail

*Michigan*

**States:** Michigan

**Counties:** Kent

Length: 4.9miles

**Trail end points:** Fred Meijer Millennium Trail  
at Butterworth St. and Maynard Ave. to City of  
Walker Ice & Fitness Center on Remembrance  
Rd. NW

**Trail surfaces:** Asphalt, Concrete

**Trail category:** Greenway/Non-RT

**Trail activities:** Bike, Inline

Skating, Wheelchair Accessible, Walking, Cross

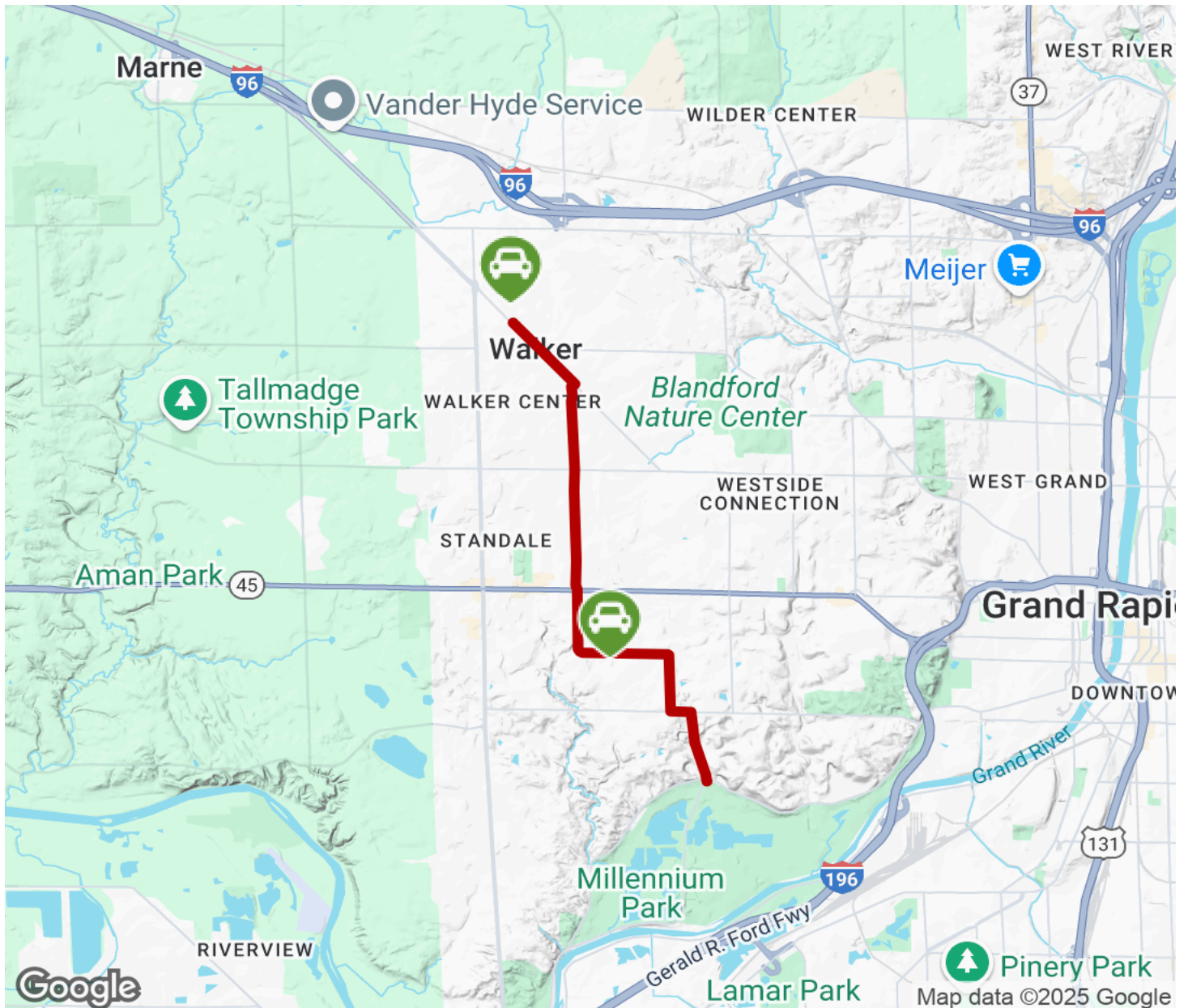
## Parking & Trail Access

Parking for the Fred Meijer Standale Trail is available at its southern end in Millennium Park along Maynard Avenue. Farther north, parking can be found at a small community park on Sunset Hills Avenue and at the City of Walker Ice & Fitness Center on Remembrance Road.



# Fred Meijer Standale Trail

Michigan



Trailhead



Restroom



Parking



Water Fountain



Tunnel



**TrailLink**  
by Rails-to-Trails Conservancy

**TrailLink.com**