



2025

TrailLink Unlimited



Guides



Stevens Rail Trail

New Hampshire



Stevens Rail Trail

New Hampshire

The Stevens Rail Trail is part of the Concord-Lake Sunapee Rail Trail, which follows the historic Concord-Claremont Railroad



The Stevens Rail Trail is part of the [Concord-Lake Sunapee Rail Trail](#), which follows the historic Concord-Claremont Railroad corridor. Located about a dozen miles west of Concord, the Stevens Rail Trail offers a quiet, wooded route in Contoocook Village.

Running from Old Warner Road in Davisville to the intersection of Spring Street and Krzyzaniak Lane in Hopkinton, the trail has been resurfaced with a fine stone dust. Expect to see water views, wildflowers, and wildlife on your journey. In the winter, the trail is used and maintained by local snowmobilers.



TrailLink
by Rails-to-Trails Conservancy

TrailLink.com



Stevens Rail Trail

New Hampshire

States: New Hampshire

Counties: Merrimack

Length: 1.65miles

Trail end points: Old Warner Rd (Davisville) to
Spring St & Krzyzaniak Ln (Hopkinton)

Trail surfaces: Crushed Stone,Gravel

Trail category: Rail-Trail

Trail activities: Bike,Wheelchair

Accessible,Horseback

Riding,Snowmobiling,Walking

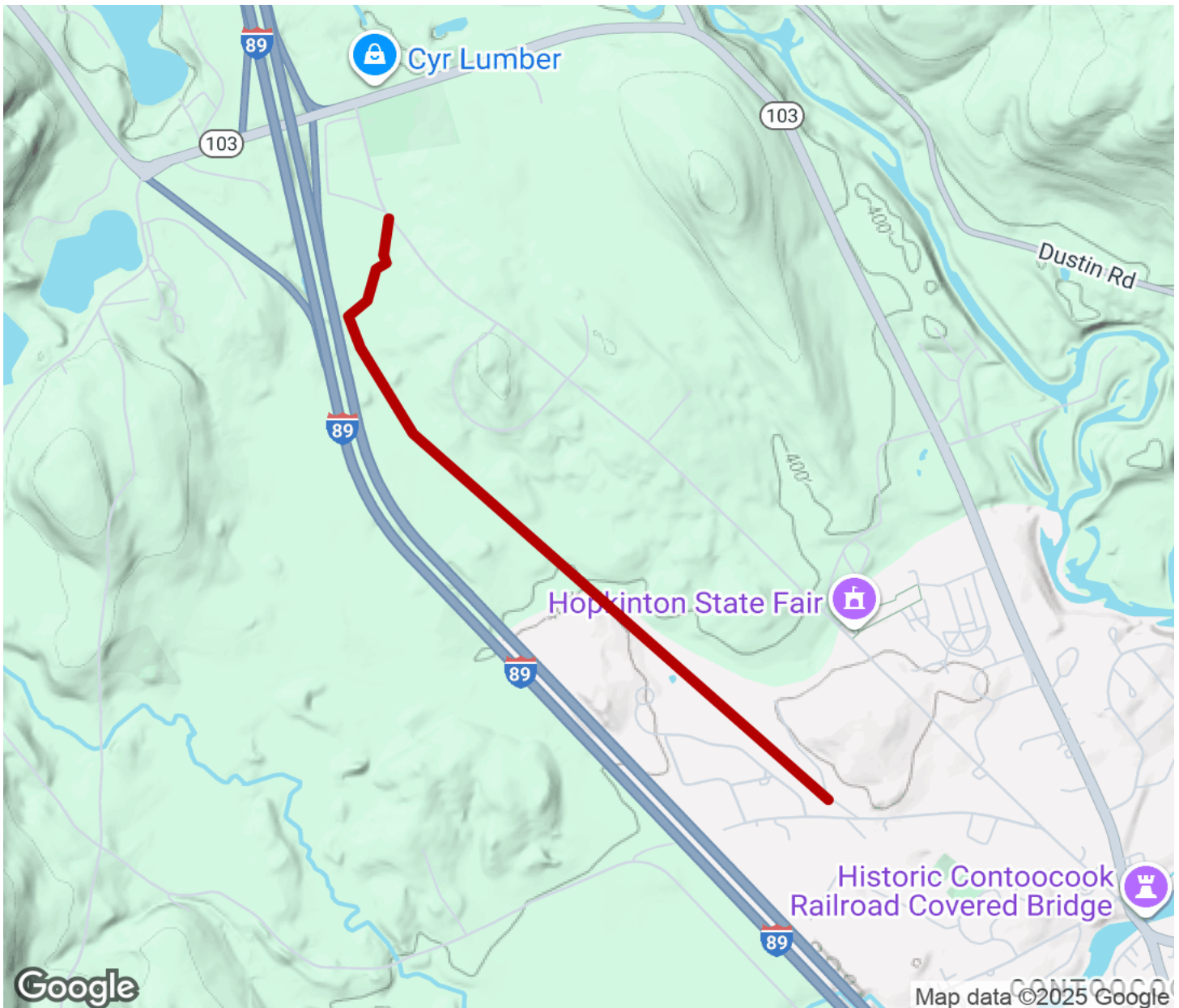
Parking & Trail Access

Parking is available in Davisville to the right of the trail gate on Old Warner Road and in Hopkinton by the town's library. In Hopkinton, there is an informational kiosk and parking to the right of the Hopkinton library. From the library, follow the back access road to the intersection of Spring Street and Krzyzaniak Lane, where you'll find the orange trail gate.



Stevens Rail Trail

New Hampshire



Trailhead



Restroom



Parking



Water Fountain



Tunnel



TrailLink
by Rails-to-Trails Conservancy

TrailLink.com