



2026

TrailLink Unlimited 

Guides

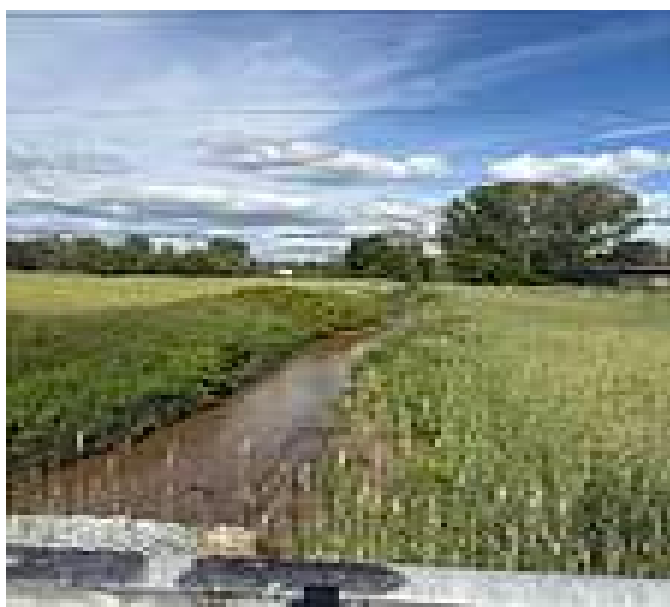


**Interurban
Trail (Kent
County)**
Michigan



Interurban Trail (Kent County) *Michigan*

The City of Wyoming's Interurban Trail follows a former interurban railroad corridor through the heart of the community



The City of Wyoming's Interurban Trail follows a former interurban railroad corridor through the heart of the community just south of Grand Rapids. Trains between Grand Rapids and Kalamazoo ceased running on the line in 1929, but the corridor was preserved intact for overhead electricity transmission.

Two segments of the Interurban Trail are open in the utility corridor, but trail users can take residential Walton Avenue to bridge the gap. At the start of the southern segment, Kelloggsville Park offers a softball field, playground, tennis and basketball courts and restrooms. A short trail spur along Pine Hill Creek at the Interurban Trail's southern end leads to Ideal Park, which features a lodge and picnic tables along Buck Creek.



TrailLink
by Rails-to-Trails Conservancy

TrailLink.com



Interurban Trail (Kent County)

Michigan

States: Michigan

Counties: Kent

Length: 2miles

Trail end points: Coolidge St. SW between Buchanan Ave. and Division Ave. to Murray St. SW; Kelloggsville Park at 50th St. SW to 60th St. SW

Trail surfaces: Asphalt

Trail category: Rail-Trail

Trail activities: Bike, Inline Skating, Walking, Wheelchair Accessible

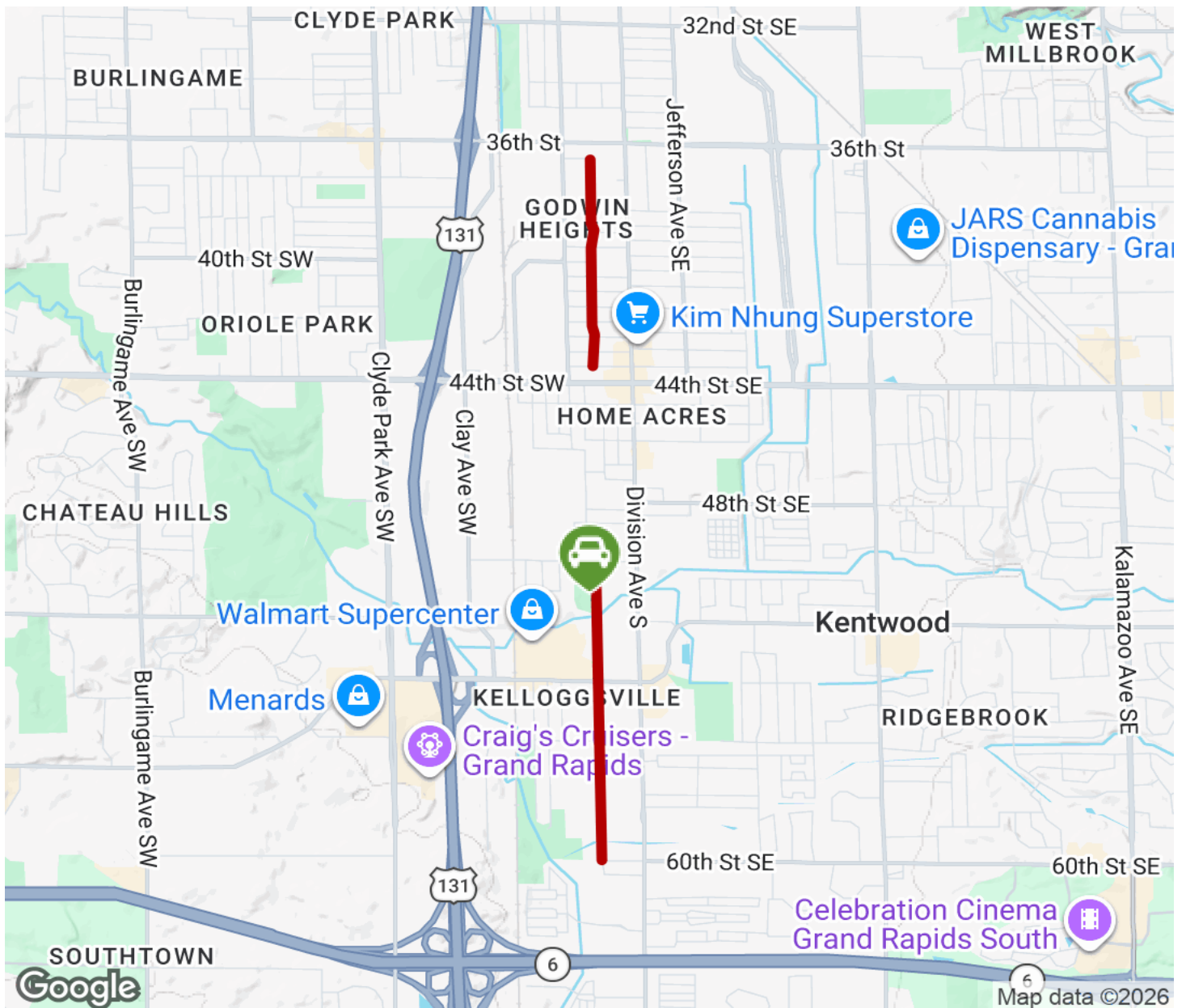
Parking & Trail Access

Parking for the Interurban Trail is available at Kelloggsville Park on 50th Street and Ideal Park on Crippen Avenue SW and Averill Avenue SW.



Interurban Trail (Kent County)

Michigan



Trailhead



Restroom



Parking



Water Fountain



Tunnel



TrailLink
by Rails-to-Trails Conservancy

TrailLink.com